

Product datasheet for **TA366605**

IDI2 Rabbit Polyclonal Antibody

Product data:

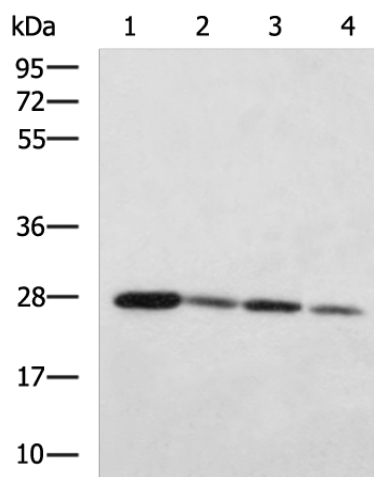
Product Type:	Primary Antibodies
Applications:	IHC, WB
Recommended Dilution:	WB: 1000-5000 WB positive control: HepG2 cell, Human liver tissue, HT-29 cell, RAW264.7 cell lystsae IHC: 150-300 Positive control: Human tonsil Predicted cell location: Cytoplasm
Reactivity:	Human, Mouse
Host:	Rabbit
Isotype:	IgG
Clonality:	Polyclonal
Immunogen:	Fusion protein of human IDI2
Formulation:	pH7.4 PBS, 0.05% NaN ₃ , 40% Glycerol
Concentration:	lot specific
Purification:	Antigen affinity purification
Conjugation:	Unconjugated
Storage:	Store at -20°C.
Stability:	1 year
Predicted Protein Size:	27 kDa
Gene Name:	isopentenyl-diphosphate delta isomerase 2
Database Link:	Entrez Gene 91734 Human Q9BXS1
Background:	The protein encoded by this gene catalyzes the conversion of isopentenyl diphosphate to dimethylallyl diphosphate, which is a precursor for the synthesis of cholesterol and other isoprenoids. This gene, which is a product of an ancestral gene duplication event, encodes a protein that may be involved in the aggregation of alpha-synuclein in the cerebral cortex of patients with Lewy body disease. In addition, segmental copy number gains in this locus have been associated with sporadic amyotrophic lateral sclerosis.



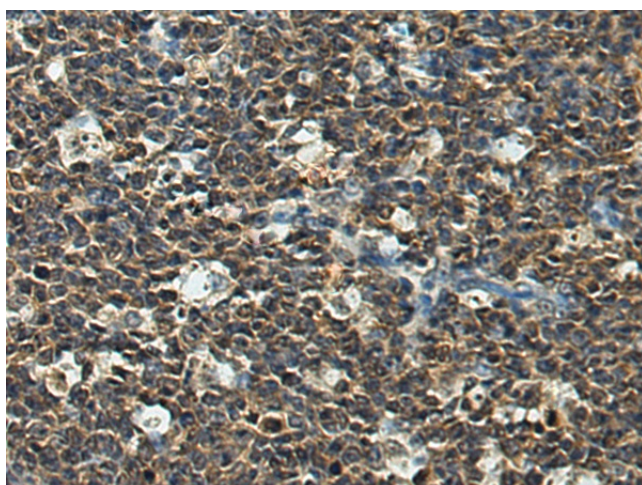
[View online »](#)

Synonyms: IPPI2

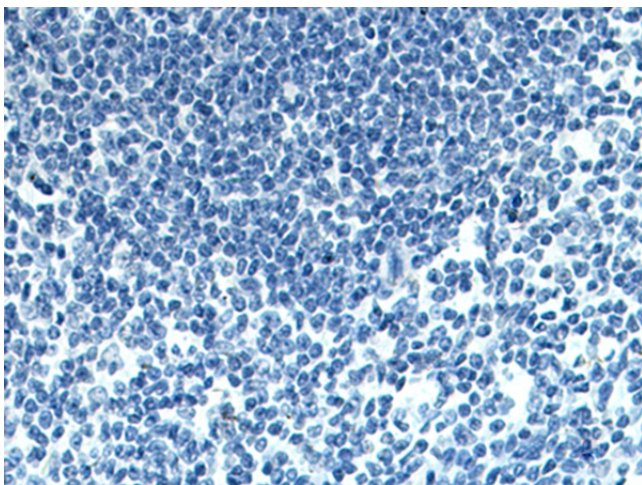
Product images:



Gel: 8%SDS-PAGE
Lysate: 40 µg
Lane 1-4: HepG2 cell
Human liver tissue
HT-29 cell
RAW264.7 cell lysates
Primary antibody: TA366605 (IDI2 Antibody) at dilution 1/1000
Secondary antibody: Goat anti rabbit IgG at 1/5000 dilution
Exposure time: 30 seconds



Immunohistochemistry of paraffin-embedded Human tonsil tissue using TA366605 (IDI2 Antibody) at dilution 1/140 (Original magnification: ×200)



Immunohistochemistry of paraffin-embedded Human tonsil tissue using TA366605 (IDI2 Antibody) at dilution 1/140, treated with fusion protein. (Original magnification: $\times 200$)