

## Product datasheet for **TA366594S**

### CMC1 Rabbit Polyclonal Antibody

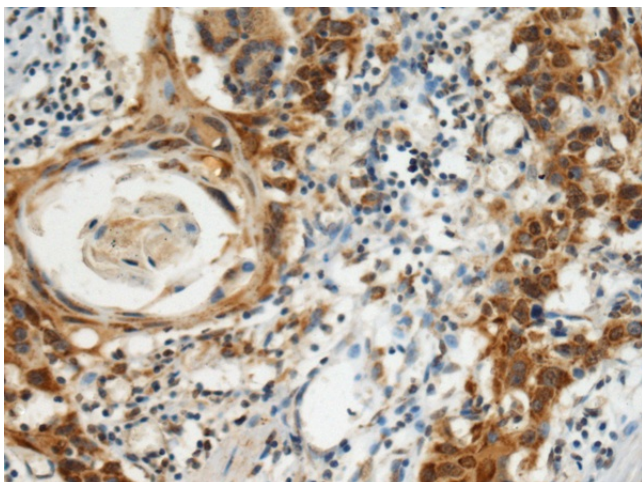
#### Product data:

Product Type:	Primary Antibodies
Applications:	IHC
Recommended Dilution:	IHC: 150-300 Positive control: Human esophagus cancer Predicted cell location: Cytoplasm
Reactivity:	Human, Mouse
Host:	Rabbit
Isotype:	IgG
Clonality:	Polyclonal
Immunogen:	Fusion protein of human CMC1
Formulation:	pH7.4 PBS, 0.05% NaN <sub>3</sub> , 40% Glycerol
Purification:	Antigen affinity purification
Conjugation:	Unconjugated
Storage:	Store at -20°C.
Stability:	1 year
Gene Name:	C-x9-C motif containing 1
Database Link:	<a href="#">Entrez Gene 152100 Human Q7Z7K0</a>
Background:	Component of the MITRAC (mitochondrial translation regulation assembly intermediate of cytochrome c oxidase complex) complex, that regulates cytochrome c oxidase assembly.
Synonyms:	C3orf68; Cmc1p; DKFZp779D0833; MGC61571

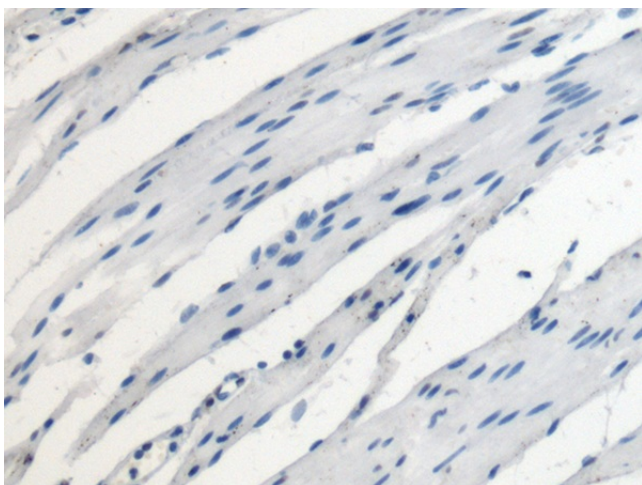


[View online »](#)

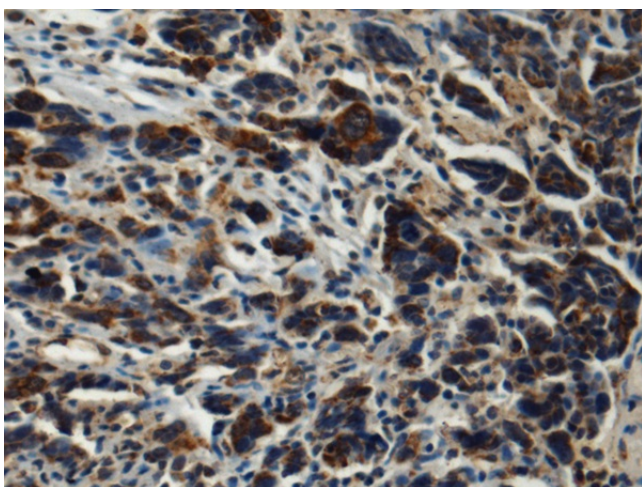
## Product images:



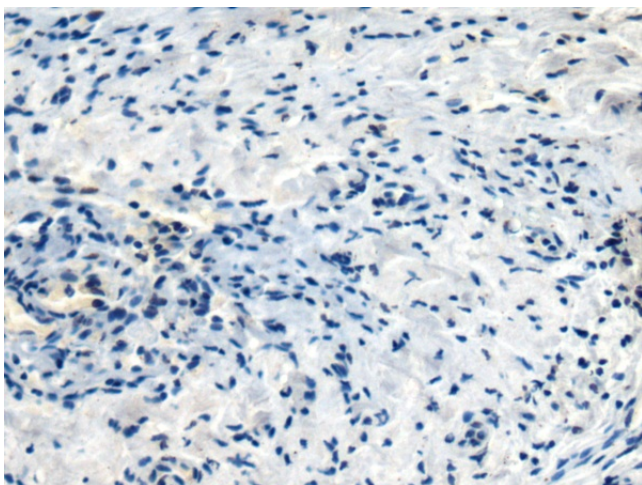
Immunohistochemistry of paraffin-embedded Human esophagus cancer tissue using [TA366594] (CMC1 Antibody) at dilution 1/120 (Original magnification:  $\times 200$ )



Immunohistochemistry of paraffin-embedded Human esophagus cancer tissue using [TA366594] (CMC1 Antibody) at dilution 1/120, treated with fusion protein. (Original magnification:  $\times 200$ )



Immunohistochemistry of paraffin-embedded Human prostate cancer tissue using [TA366594] (CMC1 Antibody) at dilution 1/120 (Original magnification: ×200)



Immunohistochemistry of paraffin-embedded Human prostate cancer tissue using [TA366594] (CMC1 Antibody) at dilution 1/120, treated with fusion protein. (Original magnification: ×200)