

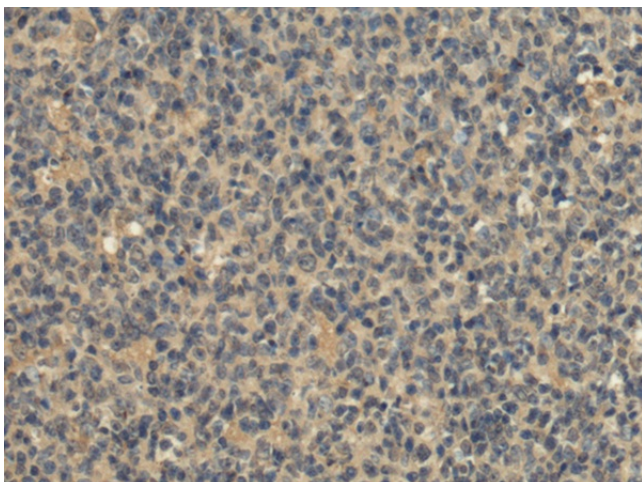
Product datasheet for **TA366592**

KATNA1 Rabbit Polyclonal Antibody

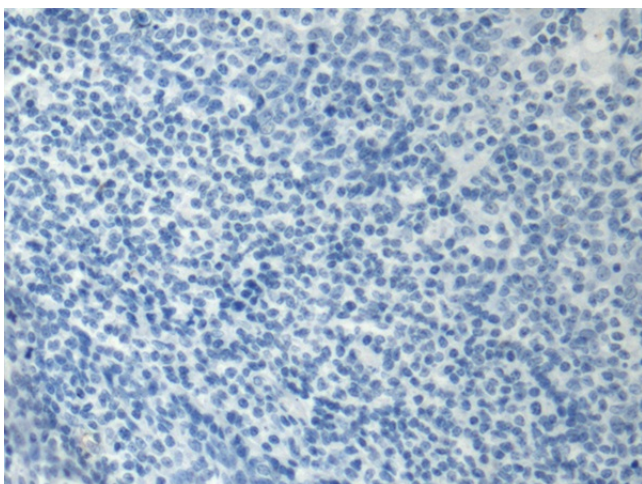
Product data:

Product Type:	Primary Antibodies
Applications:	IHC
Recommended Dilution:	IHC: 200-400 Positive control: Human tonsil Predicted cell location: Cytoplasm
Reactivity:	Human, Mouse, Rat
Host:	Rabbit
Isotype:	IgG
Clonality:	Polyclonal
Immunogen:	Fusion protein of human KATNA1
Formulation:	pH7.4 PBS, 0.05% NaN ₃ , 40% Glycerol
Concentration:	lot specific
Purification:	Antigen affinity purification
Conjugation:	Unconjugated
Storage:	Store at -20°C.
Stability:	1 year
Gene Name:	katanin catalytic subunit A1
Database Link:	Entrez Gene 11104 Human O75449
Background:	Microtubules, polymers of alpha and beta tubulin subunits, form the mitotic spindle of a dividing cell and help to organize membranous organelles during interphase. Katanin is a heterodimer that consists of a 60 kDa ATPase (p60 subunit A 1) and an 80 kDa accessory protein (p80 subunit B 1). The p60 subunit acts to sever and disassemble microtubules, while the p80 subunit targets the enzyme to the centrosome. This gene encodes the p80 subunit. This protein is a member of the AAA family of ATPases. Multiple alternatively spliced variants, encoding the same protein, have been identified. [provided by RefSeq, Feb 2011]
Synonyms:	KATNA1

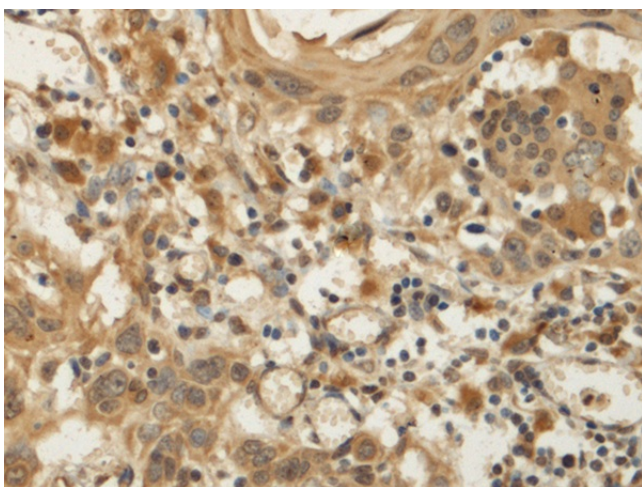
[View online »](#)

Product images:


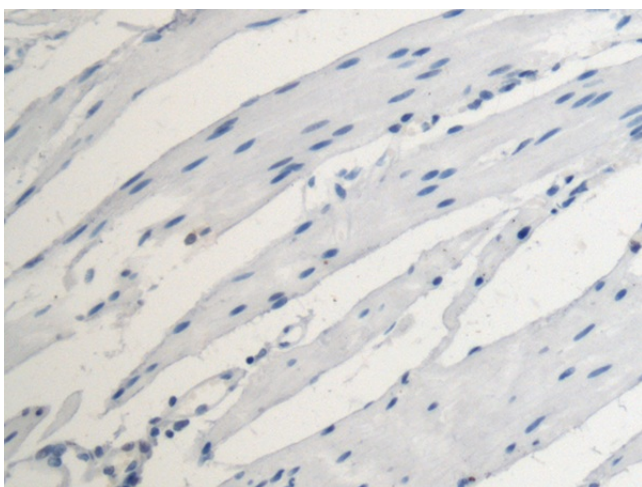
Immunohistochemistry of paraffin-embedded Human tonsil tissue using TA366592 (KATNA1 Antibody) at dilution 1/170 (Original magnification: ×200)



Immunohistochemistry of paraffin-embedded Human tonsil tissue using TA366592 (KATNA1 Antibody) at dilution 1/170, treated with fusion protein. (Original magnification: ×200)



Immunohistochemistry of paraffin-embedded Human esophagus cancer tissue using TA366592 (KATNA1 Antibody) at dilution 1/170 (Original magnification: $\times 200$)



Immunohistochemistry of paraffin-embedded Human esophagus cancer tissue using TA366592 (KATNA1 Antibody) at dilution 1/170, treated with fusion protein. (Original magnification: $\times 200$)