

## Product datasheet for **TA366587S**

### **GUCY1B1 Rabbit Polyclonal Antibody**

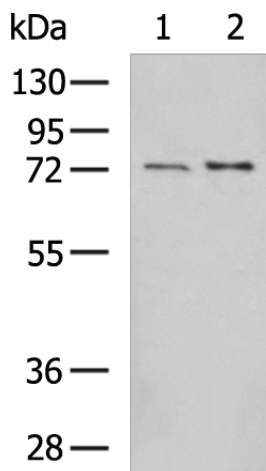
#### **Product data:**

Product Type:	Primary Antibodies
Applications:	IHC, WB
Recommended Dilution:	WB: 500-2000 WB positive control: Human placenta tissue, Rat lung tissue lysates IHC: 100-300 Positive control: Human ovarian cancer Predicted cell location: Cytoplasm
Reactivity:	Human, Mouse, Rat
Host:	Rabbit
Isotype:	IgG
Clonality:	Polyclonal
Immunogen:	Fusion protein of human GUCY1B1
Formulation:	pH7.4 PBS, 0.05% NaN <sub>3</sub> , 40% Glycerol
Purification:	Antigen affinity purification
Conjugation:	Unconjugated
Storage:	Store at -20°C.
Stability:	1 year
Predicted Protein Size:	71 kDa
Gene Name:	guanylate cyclase 1, soluble, beta 3
Database Link:	<a href="#">Entrez Gene 2983 Human Q02153</a>
Background:	This gene encodes the beta subunit of the soluble guanylate cyclase (sGC), which catalyzes the conversion of GTP (guanosine triphosphate) to cGMP (cyclic guanosine monophosphate). The encoded protein contains an HNOX domain, which serves as a receptor for ligands such as nitric oxide, oxygen and nitrovasodilator drugs. Alternative splicing results in multiple transcript variants.
Synonyms:	GC-S-beta-1; GC-SB3; GCS-beta-1; GCS-beta-3; GUC1B3; GUCB3; GUCSB3; GUCY1B1

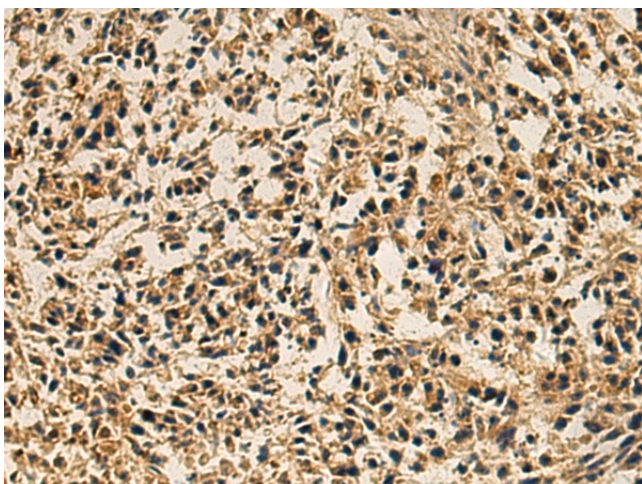


[View online »](#)

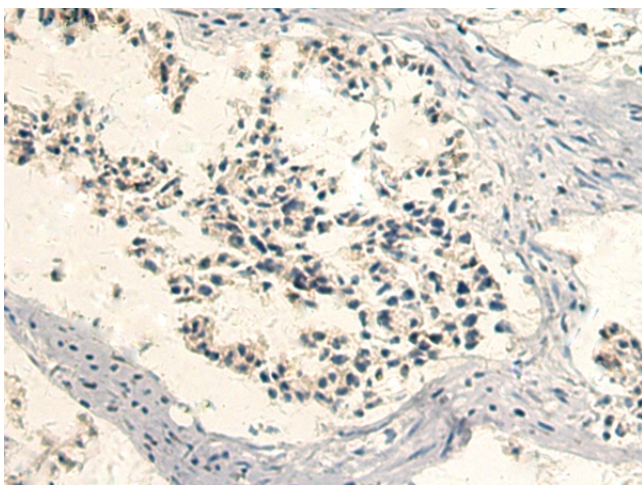
**Product images:**



Gel: 8%SDS-PAGE  
 Lysate: 40 µg  
 Lane 1-2: Human placenta tissue  
 Rat lung tissue lysates  
 Primary antibody: [TA366587] (GUCY1B1  
 Antibody) at dilution 1/900  
 Secondary antibody: Goat anti rabbit IgG at  
 1/5000 dilution  
 Exposure time: 3 minutes



Immunohistochemistry of paraffin-embedded  
 Human ovarian cancer tissue using [TA366587]  
 (GUCY1B1 Antibody) at dilution 1/120 (Original  
 magnification: ×200)



Immunohistochemistry of paraffin-embedded  
 Human ovarian cancer tissue using [TA366587]  
 (GUCY1B1 Antibody) at dilution 1/120, treated  
 with fusion protein. (Original magnification: ×200)