

Product datasheet for **TA366587**

GUCY1B1 Rabbit Polyclonal Antibody

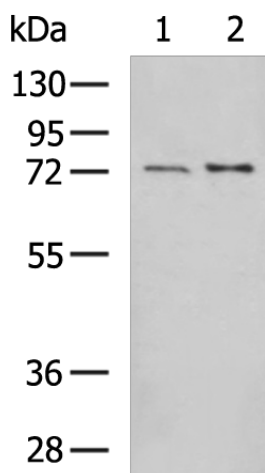
Product data:

Product Type:	Primary Antibodies
Applications:	IHC, WB
Recommended Dilution:	WB: 500-2000 WB positive control: Human placenta tissue, Rat lung tissue lysates IHC: 100-300 Positive control: Human ovarian cancer Predicted cell location: Cytoplasm
Reactivity:	Human, Mouse, Rat
Host:	Rabbit
Isotype:	IgG
Clonality:	Polyclonal
Immunogen:	Fusion protein of human GUCY1B1
Formulation:	pH7.4 PBS, 0.05% NaN ₃ , 40% Glycerol
Concentration:	lot specific
Purification:	Antigen affinity purification
Conjugation:	Unconjugated
Storage:	Store at -20°C.
Stability:	1 year
Predicted Protein Size:	71 kDa
Gene Name:	guanylate cyclase 1, soluble, beta 3
Database Link:	Entrez Gene 2983 Human Q02153
Background:	This gene encodes the beta subunit of the soluble guanylate cyclase (sGC), which catalyzes the conversion of GTP (guanosine triphosphate) to cGMP (cyclic guanosine monophosphate). The encoded protein contains an HNOX domain, which serves as a receptor for ligands such as nitric oxide, oxygen and nitrovasodilator drugs. Alternative splicing results in multiple transcript variants.
Synonyms:	GC-S-beta-1; GC-SB3; GCS-beta-1; GCS-beta-3; GUC1B3; GUCB3; GUCSB3; GUCY1B1

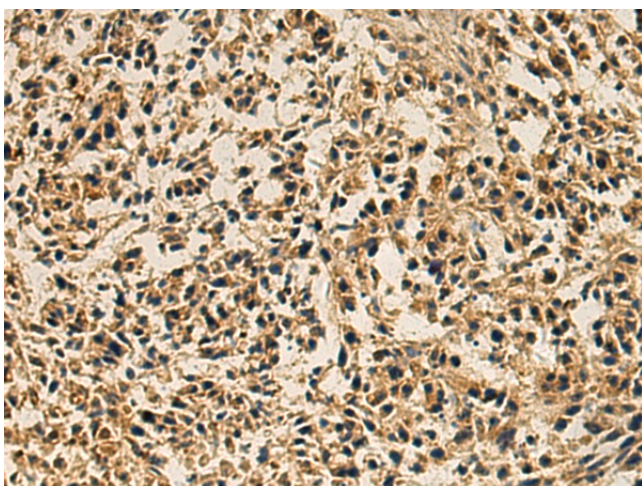


[View online »](#)

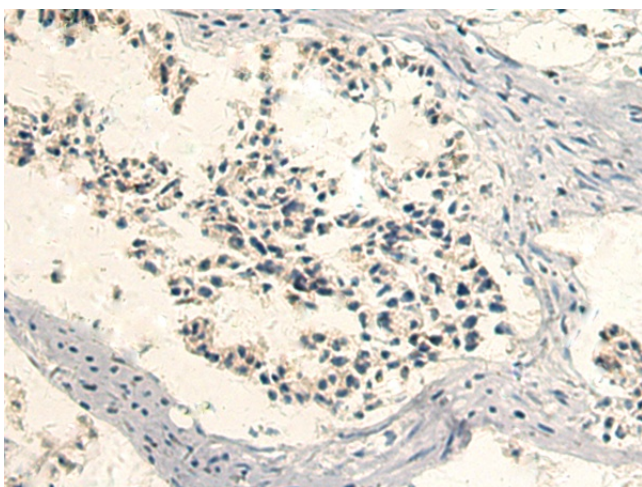
Product images:



Gel: 8%SDS-PAGE
Lysate: 40 μ g
Lane 1-2: Human placenta tissue
Rat lung tissue lysates
Primary antibody: TA366587 (GUCY1B1 Antibody)
at dilution 1/900
Secondary antibody: Goat anti rabbit IgG at
1/5000 dilution
Exposure time: 3 minutes



Immunohistochemistry of paraffin-embedded
Human ovarian cancer tissue using TA366587
(GUCY1B1 Antibody) at dilution 1/120 (Original
magnification: \times 200)



Immunohistochemistry of paraffin-embedded Human ovarian cancer tissue using TA366587 (GUCY1B1 Antibody) at dilution 1/120, treated with fusion protein. (Original magnification: ×200)