

Product datasheet for **TA366586S**

FDFT1 Rabbit Polyclonal Antibody

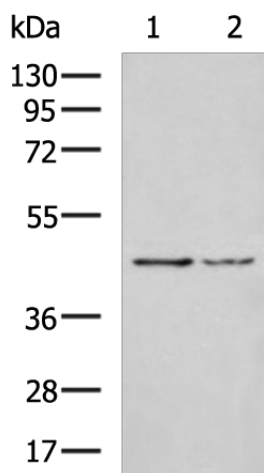
Product data:

| | |
|-------------------------|--|
| Product Type: | Primary Antibodies |
| Applications: | IHC, WB |
| Recommended Dilution: | WB: 500-2000 WB positive control: 231 and RAW264.7 cell lysates IHC: 100-200 Positive control: Human ovarian cancer Predicted cell location: Cytoplasm |
| Reactivity: | Human, Mouse, Rat |
| Host: | Rabbit |
| Isotype: | IgG |
| Clonality: | Polyclonal |
| Immunogen: | Fusion protein of human FDFT1 |
| Formulation: | pH7.4 PBS, 0.05% NaN ₃ , 40% Glycerol |
| Purification: | Antigen affinity purification |
| Conjugation: | Unconjugated |
| Storage: | Store at -20°C. |
| Stability: | 1 year |
| Predicted Protein Size: | 48 kDa |
| Gene Name: | farnesyl-diphosphate farnesyltransferase 1 |
| Database Link: | Entrez Gene 2222 Human P37268 |
| Background: | This gene encodes a membrane-associated enzyme located at a branch point in the mevalonate pathway. The encoded protein is the first specific enzyme in cholesterol biosynthesis, catalyzing the dimerization of two molecules of farnesyl diphosphate in a two-step reaction to form squalene. [provided by RefSeq, Jul 2008] |
| Synonyms: | DGPT; ERG9; SQS; SS |



[View online »](#)

Product images:



Gel: 8%SDS-PAGE

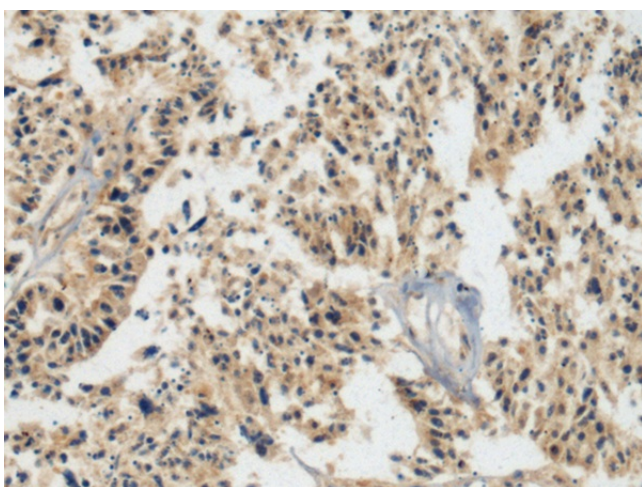
Lysate: 40 μ g

Lane 1-2: 231 and RAW264.7 cell lysates

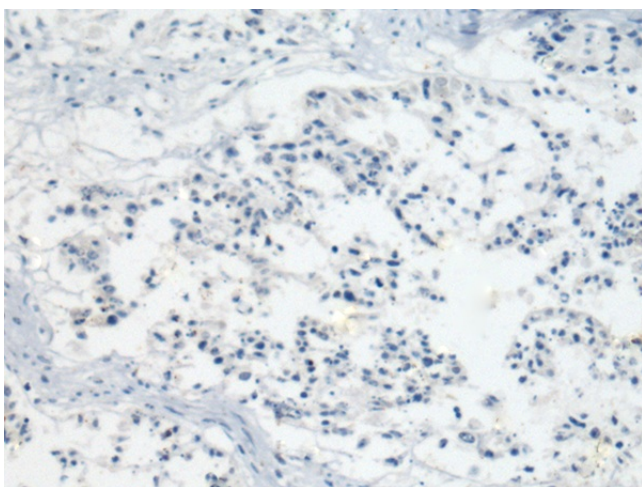
Primary antibody: [TA366586] (FDFT1 Antibody)
at dilution 1/800

Secondary antibody: Goat anti rabbit IgG at
1/5000 dilution

Exposure time: 30 seconds



Immunohistochemistry of paraffin-embedded
Human ovarian cancer tissue using [TA366586]
(FDFT1 Antibody) at dilution 1/110 (Original
magnification: $\times 200$)



Immunohistochemistry of paraffin-embedded Human ovarian cancer tissue using [TA366586] (FDFT1 Antibody) at dilution 1/110, treated with fusion protein. (Original magnification: ×200)