

Product datasheet for **TA366579S**

POLD1 Rabbit Polyclonal Antibody

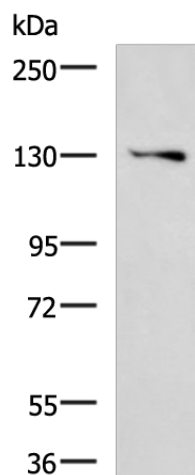
Product data:

Product Type:	Primary Antibodies
Applications:	IHC, WB
Recommended Dilution:	WB: 500-2000 WB positive control: K562 cell lysate IHC: 150-300 Positive control: Human breast cancer Predicted cell location: Nucleus
Reactivity:	Human, Mouse, Rat
Host:	Rabbit
Isotype:	IgG
Clonality:	Polyclonal
Immunogen:	Fusion protein of human POLD1
Formulation:	pH7.4 PBS, 0.05% NaN ₃ , 40% Glycerol
Purification:	Antigen affinity purification
Conjugation:	Unconjugated
Storage:	Store at -20°C.
Stability:	1 year
Predicted Protein Size:	124 kDa
Gene Name:	polymerase (DNA) delta 1, catalytic subunit
Database Link:	Entrez Gene 5424 Human P28340
Background:	This gene encodes the 125-kDa catalytic subunit of DNA polymerase delta. DNA polymerase delta possesses both polymerase and 3' to 5' exonuclease activity and plays a critical role in DNA replication and repair. Alternatively spliced transcript variants have been observed for this gene, and a pseudogene of this gene is located on the long arm of chromosome 6. [provided by RefSeq, Mar 2012]
Synonyms:	CDC2; POLD

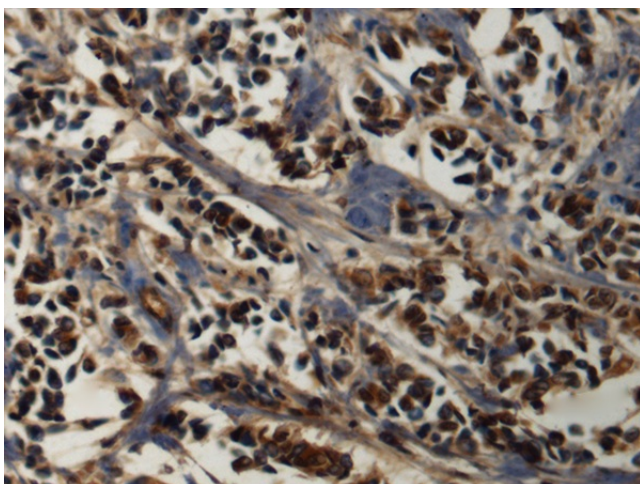


[View online »](#)

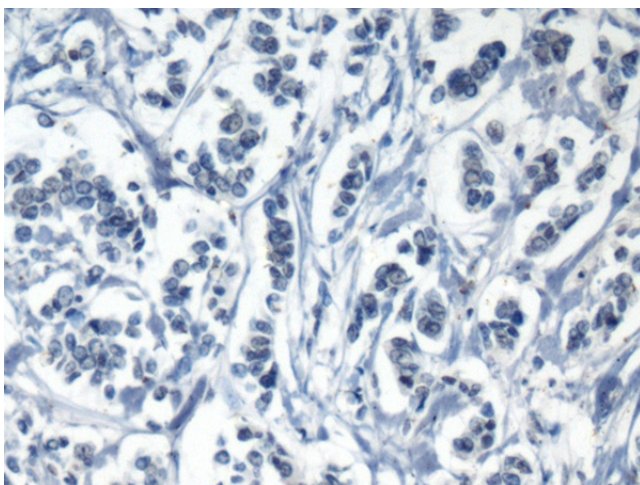
Product images:



Gel: 6%SDS-PAGE
Lysate: 40 μ g
Lane: K562 cell lysate
Primary antibody: [TA366579] (POLD1 Antibody)
at dilution 1/1100
Secondary antibody: Goat anti rabbit IgG at
1/5000 dilution
Exposure time: 3 minutes



Immunohistochemistry of paraffin-embedded
Human breast cancer tissue using [TA366579]
(POLD1 Antibody) at dilution 1/160 (Original
magnification: \times 200)



Immunohistochemistry of paraffin-embedded
Human breast cancer tissue using [TA366579]
(POLD1 Antibody) at dilution 1/160, treated with
fusion protein. (Original magnification: \times 200)