

## Product datasheet for **TA366579**

### **POLD1 Rabbit Polyclonal Antibody**

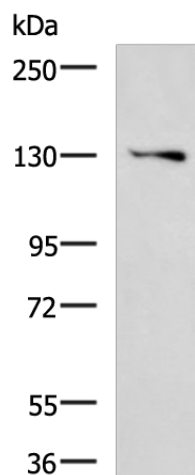
#### **Product data:**

Product Type:	Primary Antibodies
Applications:	IHC, WB
Recommended Dilution:	WB: 500-2000 WB positive control: K562 cell lysate IHC: 150-300 Positive control: Human breast cancer Predicted cell location: Nucleus
Reactivity:	Human, Mouse, Rat
Host:	Rabbit
Isotype:	IgG
Clonality:	Polyclonal
Immunogen:	Fusion protein of human POLD1
Formulation:	pH7.4 PBS, 0.05% NaN <sub>3</sub> , 40% Glycerol
Concentration:	lot specific
Purification:	Antigen affinity purification
Conjugation:	Unconjugated
Storage:	Store at -20°C.
Stability:	1 year
Predicted Protein Size:	124 kDa
Gene Name:	polymerase (DNA) delta 1, catalytic subunit
Database Link:	<a href="#">Entrez Gene 5424 Human P28340</a>
Background:	This gene encodes the 125-kDa catalytic subunit of DNA polymerase delta. DNA polymerase delta possesses both polymerase and 3' to 5' exonuclease activity and plays a critical role in DNA replication and repair. Alternatively spliced transcript variants have been observed for this gene, and a pseudogene of this gene is located on the long arm of chromosome 6. [provided by RefSeq, Mar 2012]
Synonyms:	CDC2; POLD

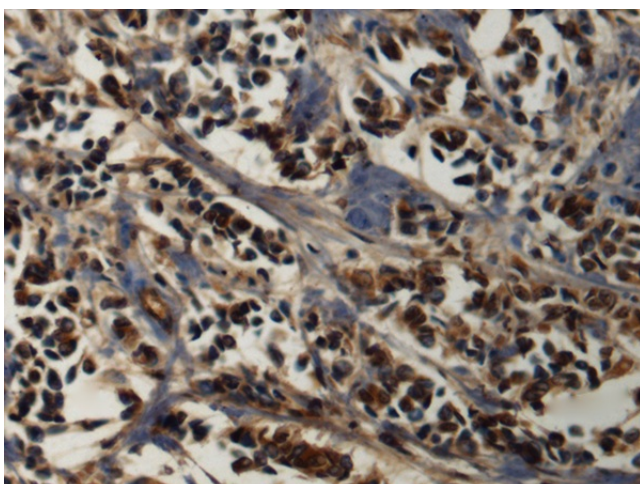


[View online »](#)

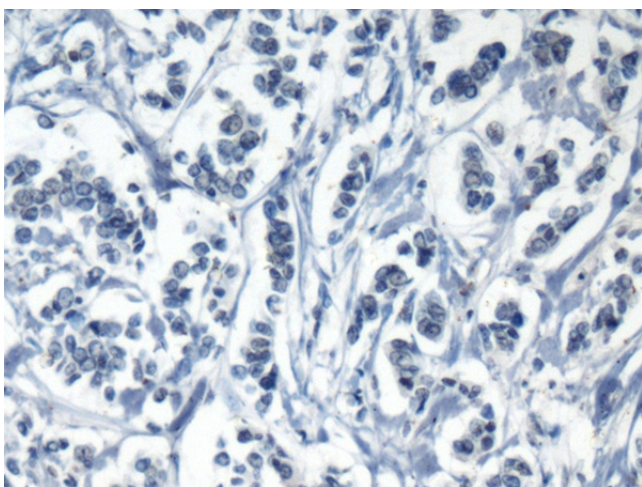
## Product images:



Gel: 6%SDS-PAGE  
Lysate: 40  $\mu$ g  
Lane: K562 cell lysate  
Primary antibody: TA366579 (POLD1 Antibody) at dilution 1/1100  
Secondary antibody: Goat anti rabbit IgG at 1/5000 dilution  
Exposure time: 3 minutes



Immunohistochemistry of paraffin-embedded Human breast cancer tissue using TA366579 (POLD1 Antibody) at dilution 1/160 (Original magnification:  $\times$ 200)



Immunohistochemistry of paraffin-embedded Human breast cancer tissue using TA366579 (POLD1 Antibody) at dilution 1/160, treated with fusion protein. (Original magnification: ×200)