

## Product datasheet for **TA366578**

### DHX38 Rabbit Polyclonal Antibody

#### Product data:

Product Type:	Primary Antibodies
Applications:	IHC
Recommended Dilution:	IHC: 100-300 Positive control: Human gastric cancer Predicted cell location: Nucleus
Reactivity:	Human
Host:	Rabbit
Isotype:	IgG
Clonality:	Polyclonal
Immunogen:	Fusion protein of human DHX38
Formulation:	pH7.4 PBS, 0.05% NaN <sub>3</sub> , 40% Glycerol
Concentration:	lot specific
Purification:	Antigen affinity purification
Conjugation:	Unconjugated
Storage:	Store at -20°C.
Stability:	1 year
Gene Name:	DEAH-box helicase 38
Database Link:	<a href="#">Entrez Gene 9785 Human Q92620</a>

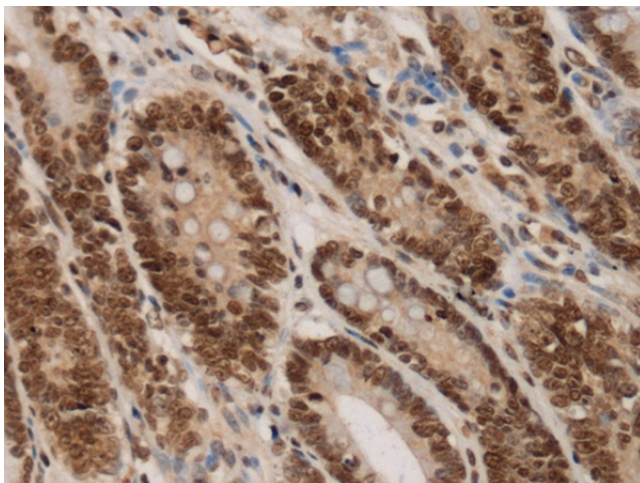
**Background:** DEAD box proteins, characterized by the conserved motif Asp-Glu-Ala-Asp (DEAD), are putative RNA helicases. They are implicated in a number of cellular processes involving alteration of RNA secondary structure such as translation initiation, nuclear and mitochondrial splicing, and ribosome and spliceosome assembly. Based on their distribution patterns, some members of this family are believed to be involved in embryogenesis, spermatogenesis, and cellular growth and division. The protein encoded by this gene is a member of the DEAD/H box family of splicing factors. This protein resembles yeast Prp16 more closely than other DEAD/H family members. It is an ATPase and essential for the catalytic step II in pre-mRNA splicing process. [provided by RefSeq, Jul 2008]



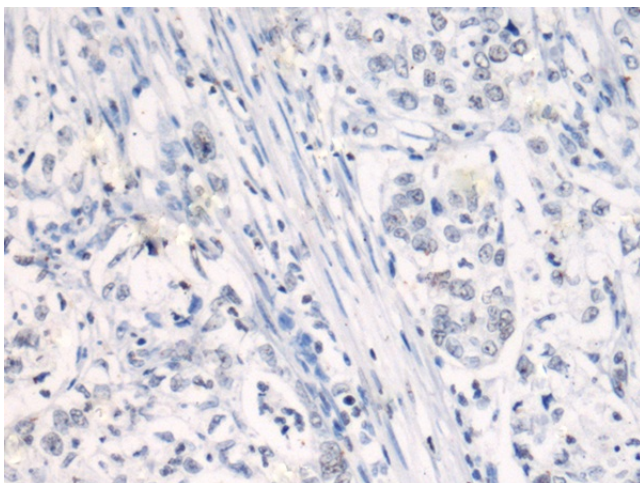
[View online »](#)

Synonyms: DDX38; hPrp16; KIAA0224; PRP16; PRPF16

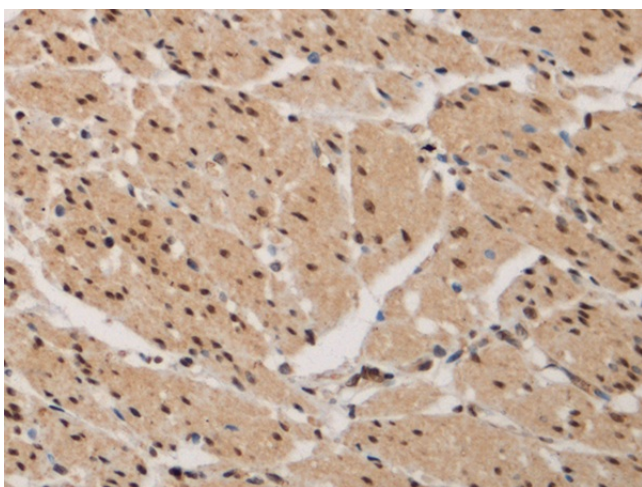
### Product images:



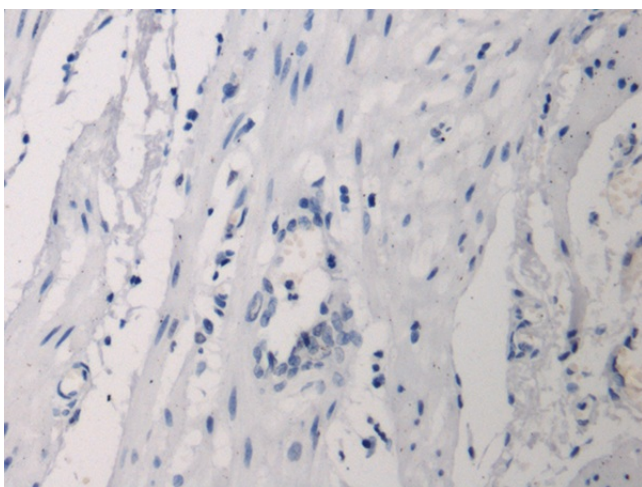
Immunohistochemistry of paraffin-embedded Human gastric cancer tissue using TA366578 (DHX38 Antibody) at dilution 1/90 (Original magnification: x200)



Immunohistochemistry of paraffin-embedded Human gastric cancer tissue using TA366578 (DHX38 Antibody) at dilution 1/90, treated with fusion protein. (Original magnification: x200)



Immunohistochemistry of paraffin-embedded Human esophagus cancer tissue using TA366578 (DHX38 Antibody) at dilution 1/90 (Original magnification:  $\times 200$ )



Immunohistochemistry of paraffin-embedded Human esophagus cancer tissue using TA366578 (DHX38 Antibody) at dilution 1/90, treated with fusion protein. (Original magnification:  $\times 200$ )