

## Product datasheet for **TA366576**

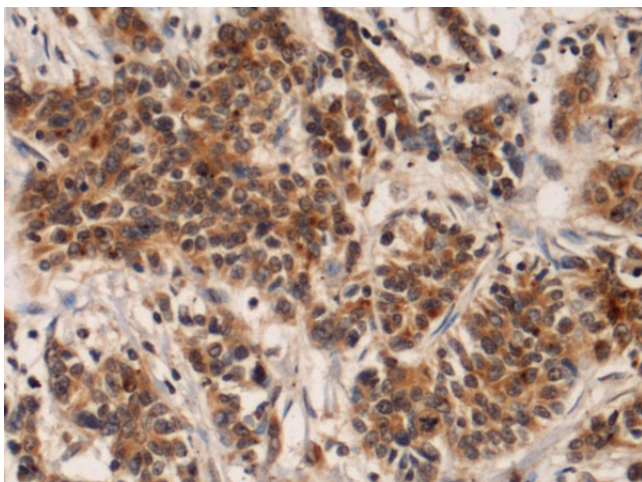
### **IQSEC1 Rabbit Polyclonal Antibody**

#### **Product data:**

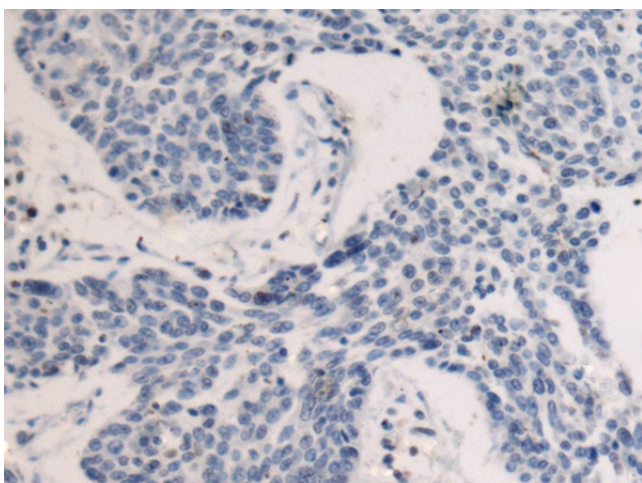
<b>Product Type:</b>	Primary Antibodies
<b>Applications:</b>	IHC
<b>Recommended Dilution:</b>	IHC: 150-300 Positive control: Human colorectal cancer Predicted cell location: Cytoplasm or Nucleus
<b>Reactivity:</b>	Human, Mouse
<b>Host:</b>	Rabbit
<b>Isotype:</b>	IgG
<b>Clonality:</b>	Polyclonal
<b>Immunogen:</b>	Fusion protein of human IQSEC1
<b>Formulation:</b>	pH7.4 PBS, 0.05% NaN <sub>3</sub> , 40% Glycerol
<b>Concentration:</b>	lot specific
<b>Purification:</b>	Antigen affinity purification
<b>Conjugation:</b>	Unconjugated
<b>Storage:</b>	Store at -20°C.
<b>Stability:</b>	1 year
<b>Gene Name:</b>	IQ motif and Sec7 domain 1
<b>Database Link:</b>	<a href="#">Entrez Gene 9922 Human Q6DN90</a>
<b>Background:</b>	Guanine nucleotide exchange factor for ARF1 and ARF6 (PubMed:24058294). Guanine nucleotide exchange factor activity is enhanced by lipid binding (PubMed:24058294). Accelerates GTP binding by ARFs of all three classes. Guanine nucleotide exchange protein for ARF6, mediating internalisation of beta-1 integrin.
<b>Synonyms:</b>	ARFGEP100; BRAG2; KIAA0763



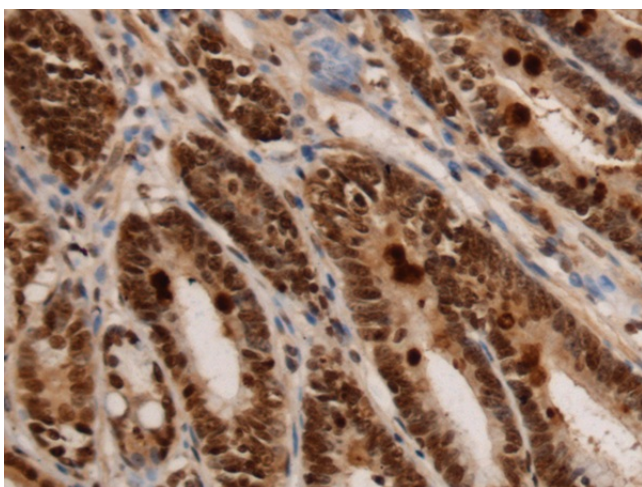
[View online »](#)

**Product images:**

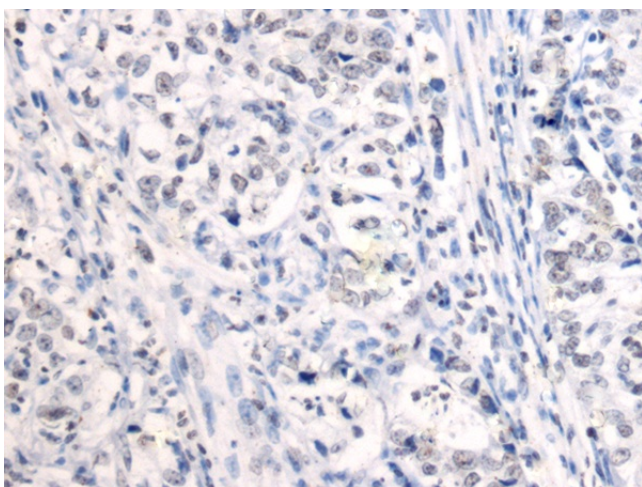
Immunohistochemistry of paraffin-embedded Human colorectal cancer tissue using TA366576 (IQSEC1 Antibody) at dilution 1/145 (Original magnification:  $\times 200$ )



Immunohistochemistry of paraffin-embedded Human colorectal cancer tissue using TA366576 (IQSEC1 Antibody) at dilution 1/145, treated with fusion protein. (Original magnification:  $\times 200$ )



Immunohistochemistry of paraffin-embedded Human gastric cancer tissue using TA366576 (IQSEC1 Antibody) at dilution 1/145 (Original magnification:  $\times 200$ )



Immunohistochemistry of paraffin-embedded Human gastric cancer tissue using TA366576 (IQSEC1 Antibody) at dilution 1/145, treated with fusion protein. (Original magnification:  $\times 200$ )