

Product datasheet for **TA366571S**

GNRPX (PLEKHJ1) Rabbit Polyclonal Antibody

Product data:

Product Type:	Primary Antibodies
Applications:	IHC, WB
Recommended Dilution:	WB: 500-2000 WB positive control: Mouse fetal liver tissue, Mouse heart tissue lysates IHC: 100-200 Positive control: Human esophagus cancer Predicted cell location: Cytoplasm
Reactivity:	Human, Mouse
Host:	Rabbit
Isotype:	IgG
Clonality:	Polyclonal
Immunogen:	Fusion protein of human PLEKHJ1
Formulation:	pH7.4 PBS, 0.05% NaN ₃ , 40% Glycerol
Purification:	Antigen affinity purification
Conjugation:	Unconjugated
Storage:	Store at -20°C.
Stability:	1 year
Predicted Protein Size:	18 kDa
Gene Name:	pleckstrin homology domain containing J1
Database Link:	Entrez Gene 55111 Human Q9NW61



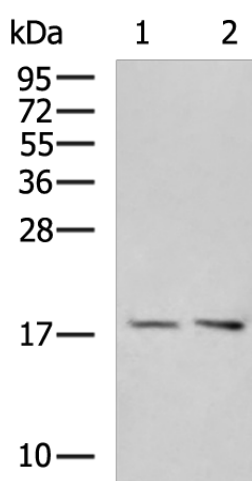
[View online »](#)

Background:

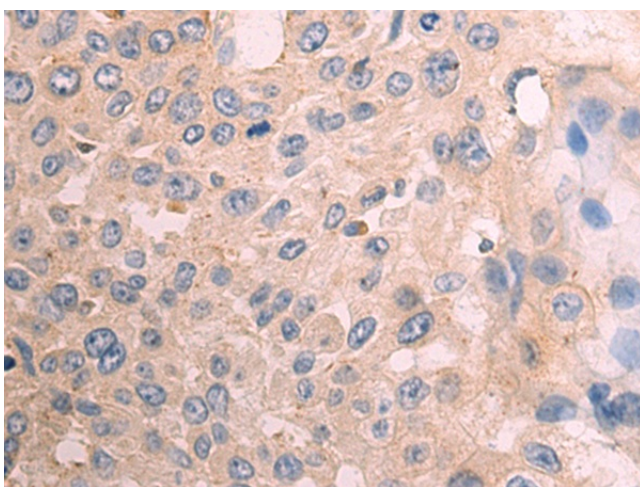
PLEKHJ1 (pleckstrin homology domain containing, family J member 1), also known as GNRPX (guanine nucleotide-releasing protein x), is a 149 amino acid phosphoprotein that contains one PH (pleckstrin homology) domain and is expressed in testis and liver. The gene that encodes PLEKHJ1 maps to human chromosome 19, which consists of approximately 63 million bases and makes up over 2% of human genomic DNA. Chromosome 19 contains the greatest gene density of the human chromosomes and is the genetic home for a number of immunoglobulin superfamily members, including killer cell and leukocyte Ig-like receptors, ICAMs, the CEACAM and PSG families, and Fc α receptors. Key genes for eye color and hair color also map to chromosome 19. Peutz-Jeghers syndrome, spinocerebellar ataxia type 6, the stroke disorder CADASIL, hypercholesterolemia and insulin-dependent diabetes are also linked to chromosome 19.

Synonyms:

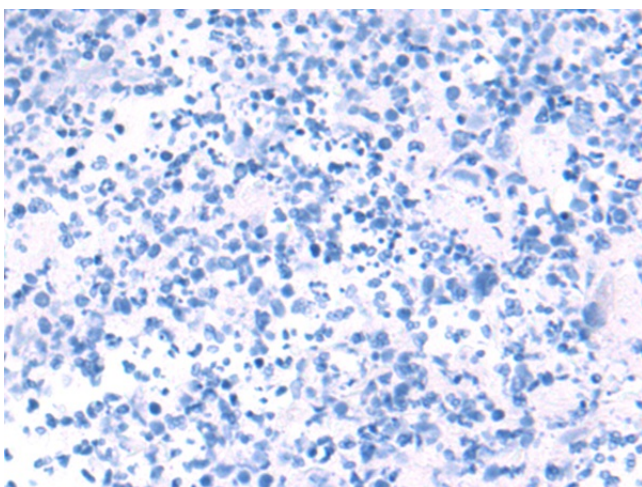
9530063M10Rik; FLJ10297; GNRPX

Product images:

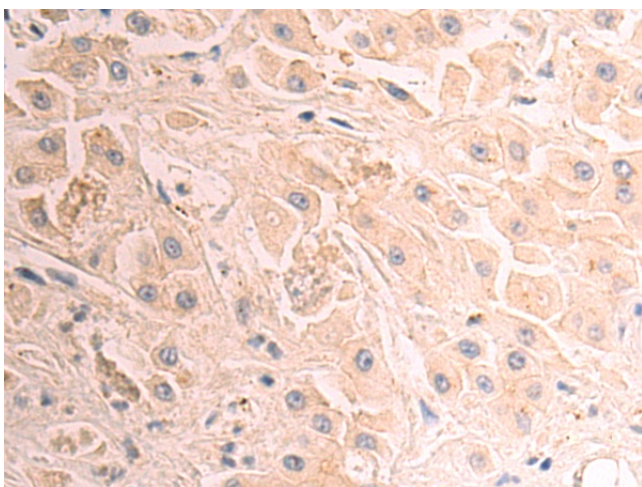
Gel: 12%SDS-PAGE
Lysate: 40 μ g
Lane 1-2: Mouse fetal liver tissue
Mouse heart tissue lysates
Primary antibody: [TA366571] (PLEKHJ1 Antibody) at dilution 1/1000
Secondary antibody: Goat anti rabbit IgG at 1/5000 dilution
Exposure time: 10 seconds



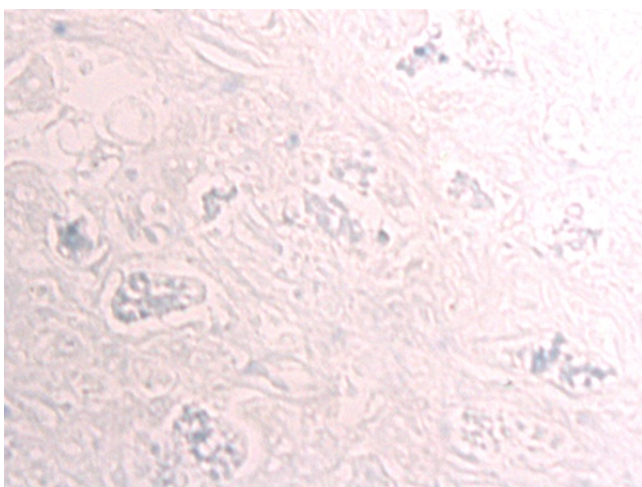
Immunohistochemistry of paraffin-embedded Human esophagus cancer tissue using [TA366571] (PLEKHJ1 Antibody) at dilution 1/100 (Original magnification: \times 200)



Immunohistochemistry of paraffin-embedded Human esophagus cancer tissue using [TA366571] (PLEKHJ1 Antibody) at dilution 1/100, treated with fusion protein. (Original magnification: $\times 200$)



Immunohistochemistry of paraffin-embedded Human liver cancer tissue using [TA366571] (PLEKHJ1 Antibody) at dilution 1/100 (Original magnification: $\times 200$)



Immunohistochemistry of paraffin-embedded Human liver cancer tissue using [TA366571] (PLEKHJ1 Antibody) at dilution 1/100, treated with fusion protein. (Original magnification: $\times 200$)