

## Product datasheet for **TA366571**

### **GNRPX (PLEKHJ1) Rabbit Polyclonal Antibody**

#### **Product data:**

<b>Product Type:</b>	Primary Antibodies
<b>Applications:</b>	IHC, WB
<b>Recommended Dilution:</b>	WB: 500-2000 WB positive control: Mouse fetal liver tissue, Mouse heart tissue lysates IHC: 100-200 Positive control: Human esophagus cancer Predicted cell location: Cytoplasm
<b>Reactivity:</b>	Human, Mouse
<b>Host:</b>	Rabbit
<b>Isotype:</b>	IgG
<b>Clonality:</b>	Polyclonal
<b>Immunogen:</b>	Fusion protein of human PLEKHJ1
<b>Formulation:</b>	pH7.4 PBS, 0.05% NaN <sub>3</sub> , 40% Glycerol
<b>Concentration:</b>	lot specific
<b>Purification:</b>	Antigen affinity purification
<b>Conjugation:</b>	Unconjugated
<b>Storage:</b>	Store at -20°C.
<b>Stability:</b>	1 year
<b>Predicted Protein Size:</b>	18 kDa
<b>Gene Name:</b>	pleckstrin homology domain containing J1
<b>Database Link:</b>	<a href="#">Entrez Gene 55111 Human Q9NW61</a>



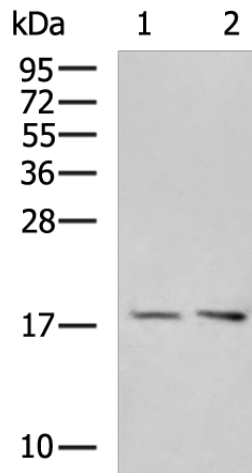
[View online »](#)

**Background:**

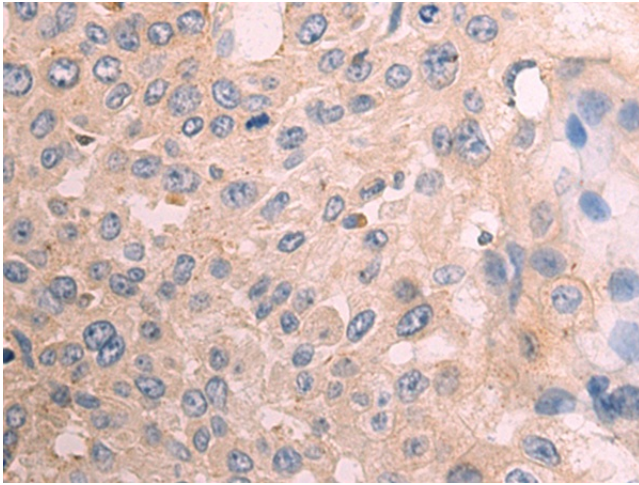
PLEKHJ1 (pleckstrin homology domain containing, family J member 1), also known as GNRPX (guanine nucleotide-releasing protein x), is a 149 amino acid phosphoprotein that contains one PH (pleckstrin homology) domain and is expressed in testis and liver. The gene that encodes PLEKHJ1 maps to human chromosome 19, which consists of approximately 63 million bases and makes up over 2% of human genomic DNA. Chromosome 19 contains the greatest gene density of the human chromosomes and is the genetic home for a number of immunoglobulin superfamily members, including killer cell and leukocyte Ig-like receptors, ICAMs, the CEACAM and PSG families, and Fc $\alpha$  receptors. Key genes for eye color and hair color also map to chromosome 19. Peutz-Jeghers syndrome, spinocerebellar ataxia type 6, the stroke disorder CADASIL, hypercholesterolemia and insulin-dependent diabetes are also linked to chromosome 19.

**Synonyms:**

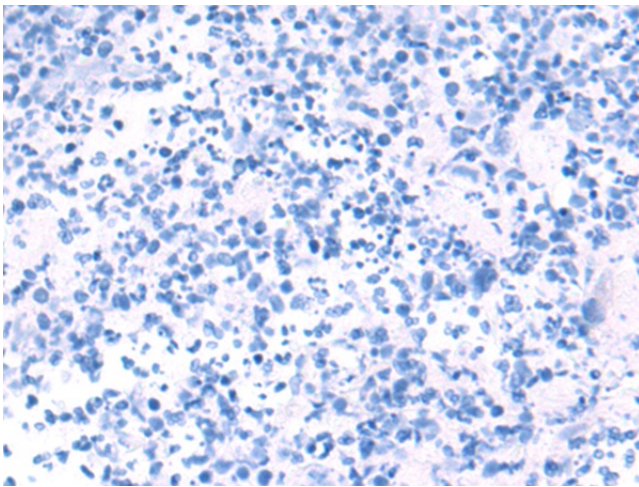
9530063M10Rik; FLJ10297; GNRPX

**Product images:**

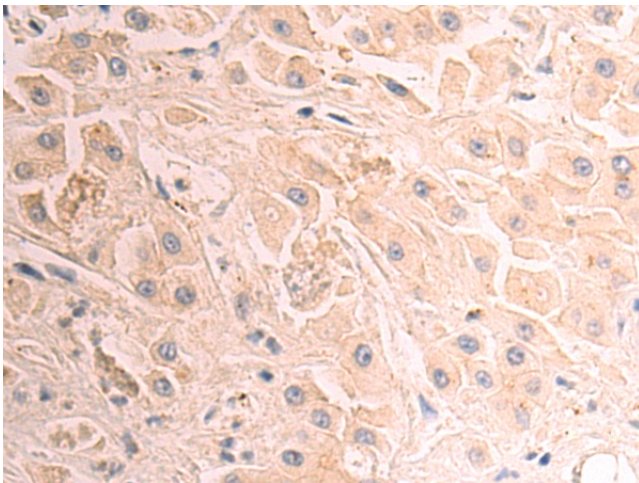
Gel: 12%SDS-PAGE  
Lysate: 40  $\mu$ g  
Lane 1-2: Mouse fetal liver tissue  
Mouse heart tissue lysates  
Primary antibody: TA366571 (PLEKHJ1 Antibody)  
at dilution 1/1000  
Secondary antibody: Goat anti rabbit IgG at  
1/5000 dilution  
Exposure time: 10 seconds



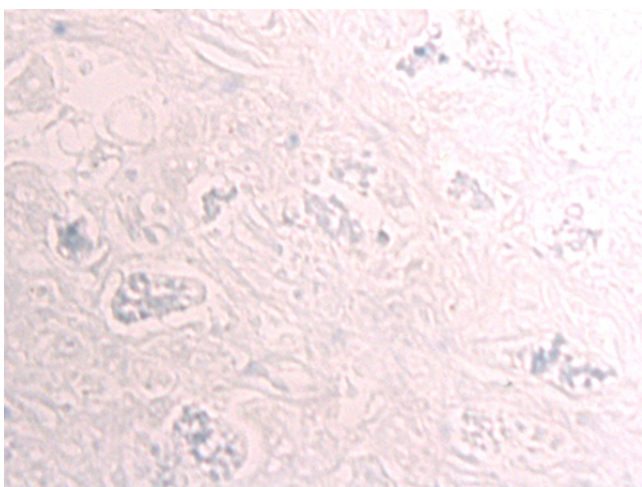
Immunohistochemistry of paraffin-embedded Human esophagus cancer tissue using TA366571 (PLEKHJ1 Antibody) at dilution 1/100 (Original magnification:  $\times 200$ )



Immunohistochemistry of paraffin-embedded Human esophagus cancer tissue using TA366571 (PLEKHJ1 Antibody) at dilution 1/100, treated with fusion protein. (Original magnification:  $\times 200$ )



Immunohistochemistry of paraffin-embedded Human liver cancer tissue using TA366571 (PLEKHJ1 Antibody) at dilution 1/100 (Original magnification:  $\times 200$ )



Immunohistochemistry of paraffin-embedded Human liver cancer tissue using TA366571 (PLEKHJ1 Antibody) at dilution 1/100, treated with fusion protein. (Original magnification: ×200)