

Product datasheet for **TA366561**

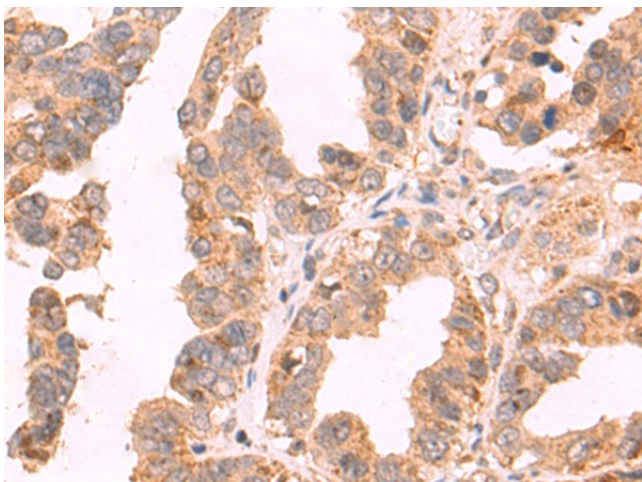
GDPD2 Rabbit Polyclonal Antibody

Product data:

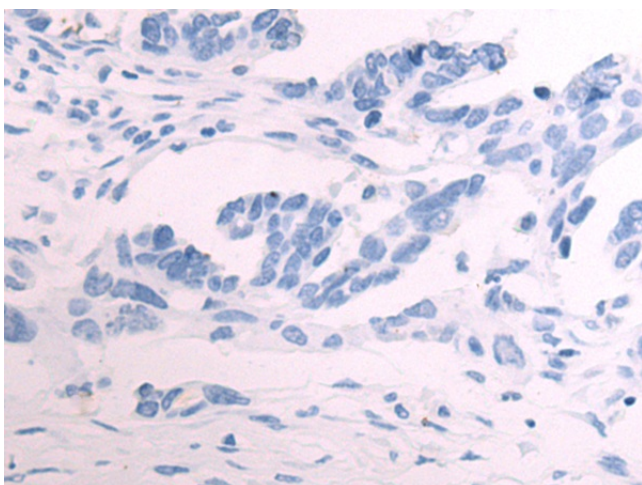
Product Type:	Primary Antibodies
Applications:	IHC
Recommended Dilution:	IHC: 50-200 Positive control: Human colorectal cancer Predicted cell location: Cytoplasm
Reactivity:	Human, Mouse
Host:	Rabbit
Isotype:	IgG
Clonality:	Polyclonal
Immunogen:	Fusion protein of human GDPD2
Formulation:	pH7.4 PBS, 0.05% NaN ₃ , 40% Glycerol
Concentration:	lot specific
Purification:	Antigen affinity purification
Conjugation:	Unconjugated
Storage:	Store at -20°C.
Stability:	1 year
Gene Name:	glycerophosphodiester phosphodiesterase domain containing 2
Database Link:	Entrez Gene 54857 Human Q9HCC8
Background:	This gene encodes a member of the glycerophosphodiester phosphodiesterase enzyme family. The encoded protein hydrolyzes glycerophosphoinositol to produce inositol 1-phosphate and glycerol. This protein may have a role in osteoblast differentiation and growth. Alternate splicing results in multiple transcript variants.
Synonyms:	FLJ20207; GDE3; OBDPF



[View online »](#)

Product images:

Immunohistochemistry of paraffin-embedded Human colorectal cancer tissue using TA366561 (GDPD2 Antibody) at dilution 1/55 (Original magnification: ×200)



Immunohistochemistry of paraffin-embedded Human colorectal cancer tissue using TA366561 (GDPD2 Antibody) at dilution 1/55, treated with fusion protein. (Original magnification: ×200)