

## Product datasheet for **TA366557S**

### **C6orf211 (ARMT1) Rabbit Polyclonal Antibody**

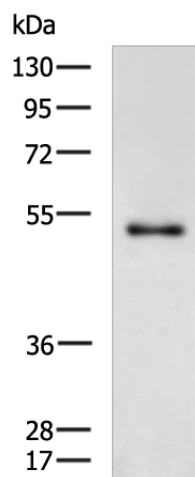
#### **Product data:**

Product Type:	Primary Antibodies
Applications:	IHC, WB
Recommended Dilution:	WB: 500-2000 WB positive control: Human uterus tissue lysate IHC: 150-300 Positive control: Human liver cancer Predicted cell location: Cytoplasm
Reactivity:	Human
Host:	Rabbit
Isotype:	IgG
Clonality:	Polyclonal
Immunogen:	Fusion protein of human ARMT1
Formulation:	pH7.4 PBS, 0.05% NaN <sub>3</sub> , 40% Glycerol
Purification:	Antigen affinity purification
Conjugation:	Unconjugated
Storage:	Store at -20°C.
Stability:	1 year
Predicted Protein Size:	51 kDa
Gene Name:	acidic residue methyltransferase 1
Database Link:	<a href="#">Entrez Gene 79624 Human Q9H993</a>
Background:	O-methyltransferase that methylates glutamate residues of target proteins to form gamma-glutamyl methyl ester residues. Methylates PCNA, suggesting it is involved in the DNA damage response.

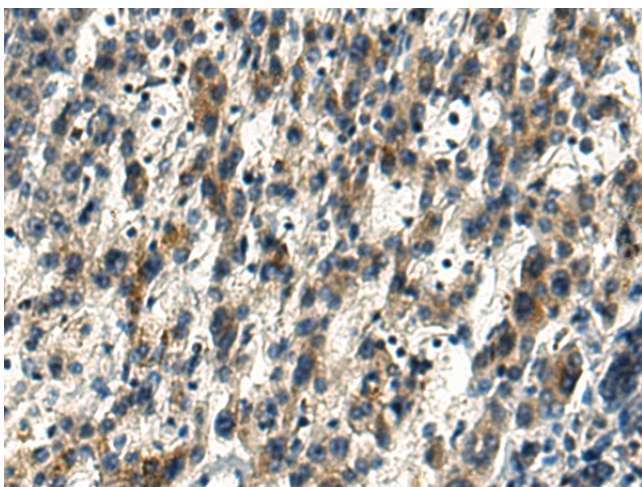


[View online »](#)

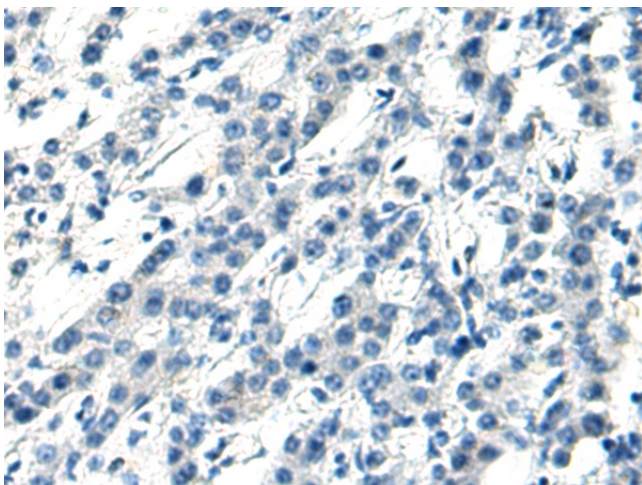
## Product images:



Gel: 8%SDS-PAGE  
Lysate: 40 µg  
Lane: Human uterus tissue lysate  
Primary antibody: [TA366557] (ARMT1 Antibody)  
at dilution 1/500  
Secondary antibody: Goat anti rabbit IgG at  
1/5000 dilution  
Exposure time: 2 minutes



Immunohistochemistry of paraffin-embedded  
Human liver cancer tissue using [TA366557]  
(ARMT1 Antibody) at dilution 1/160 (Original  
magnification: ×200)



Immunohistochemistry of paraffin-embedded Human liver cancer tissue using [TA366557] (ARMT1 Antibody) at dilution 1/160, treated with fusion protein. (Original magnification: ×200)