

## Product datasheet for **TA366557**

### **C6orf211 (ARMT1) Rabbit Polyclonal Antibody**

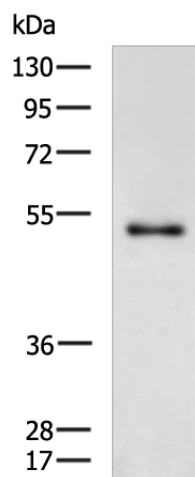
#### **Product data:**

|                         |  |
|-------------------------|--|
| Product Type:           | Primary Antibodies   |
| Applications:           | IHC, WB  |
| Recommended Dilution:   | WB: 500-2000<br>WB positive control: Human uterus tissue lysate<br>IHC: 150-300<br>Positive control: Human liver cancer<br>Predicted cell location: Cytoplasm                                  |
| Reactivity:             | Human  |
| Host:                   | Rabbit   |
| Isotype:                | IgG  |
| Clonality:              | Polyclonal   |
| Immunogen:              | Fusion protein of human ARMT1  |
| Formulation:            | pH7.4 PBS, 0.05% NaN <sub>3</sub> , 40% Glycerol   |
| Concentration:          | lot specific   |
| Purification:           | Antigen affinity purification  |
| Conjugation:            | Unconjugated   |
| Storage:                | Store at -20°C.  |
| Stability:              | 1 year   |
| Predicted Protein Size: | 51 kDa   |
| Gene Name:              | acidic residue methyltransferase 1   |
| Database Link:          | <a href="#">Entrez Gene 79624 Human Q9H993</a>   |
| Background:             | O-methyltransferase that methylates glutamate residues of target proteins to form gamma-glutamyl methyl ester residues. Methylates PCNA, suggesting it is involved in the DNA damage response. |

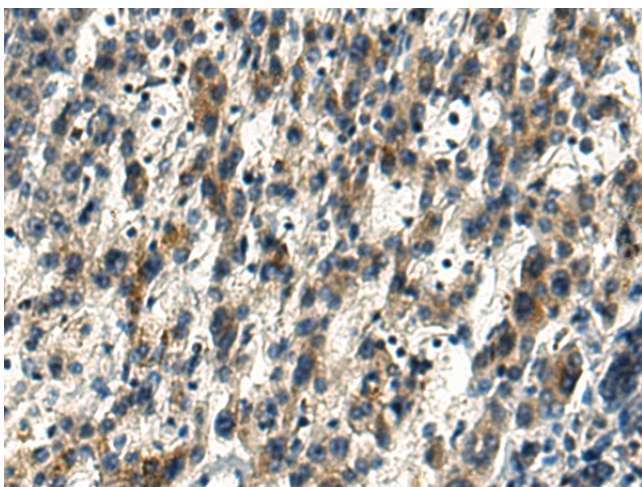


[View online »](#)

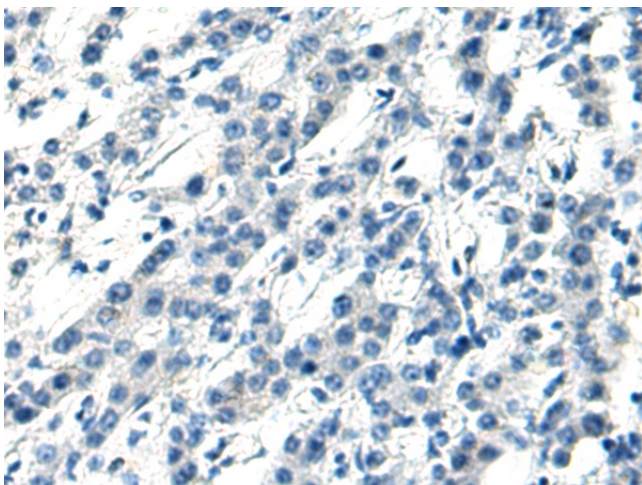
## Product images:



Gel: 8%SDS-PAGE  
 Lysate: 40 µg  
 Lane: Human uterus tissue lysate  
 Primary antibody: TA366557 (ARMT1 Antibody) at dilution 1/500  
 Secondary antibody: Goat anti rabbit IgG at 1/5000 dilution  
 Exposure time: 2 minutes



Immunohistochemistry of paraffin-embedded Human liver cancer tissue using TA366557 (ARMT1 Antibody) at dilution 1/160 (Original magnification: x200)



Immunohistochemistry of paraffin-embedded Human liver cancer tissue using TA366557 (ARMT1 Antibody) at dilution 1/160, treated with fusion protein. (Original magnification: ×200)