

Product datasheet for **TA366549**

PAIP1 Rabbit Polyclonal Antibody

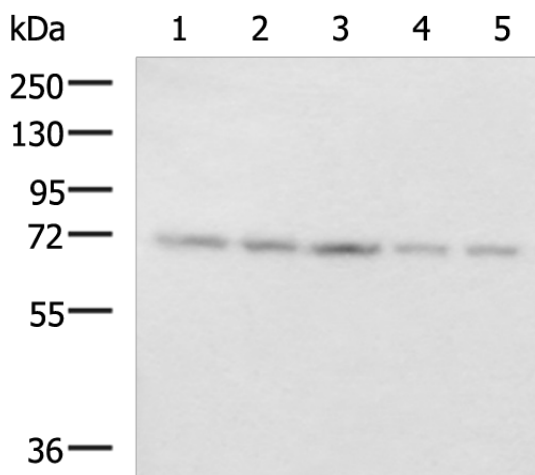
Product data:

Product Type:	Primary Antibodies
Applications:	IHC, WB
Recommended Dilution:	WB: 500-2000 WB positive control: HepG2, 293T, PC3 cell, Mouse liver tissue and Mouse kidney tissue lysates IHC: 50-200 Positive control: Human esophagus cancer Predicted cell location: Cytoplasm
Reactivity:	Human, Mouse
Host:	Rabbit
Isotype:	IgG
Clonality:	Polyclonal
Immunogen:	Fusion protein of human PAIP1
Formulation:	pH7.4 PBS, 0.05% NaN ₃ , 40% Glycerol
Concentration:	lot specific
Purification:	Antigen affinity purification
Conjugation:	Unconjugated
Storage:	Store at -20°C.
Stability:	1 year
Predicted Protein Size:	54 kDa
Gene Name:	poly(A) binding protein interacting protein 1
Database Link:	Entrez Gene 10605 Human Q9H074
Background:	The protein encoded by this gene interacts with poly(A)-binding protein and with the cap-binding complex eIF4A. It is involved in translational initiation and protein biosynthesis. Overexpression of this gene in COS7 cells stimulates translation. Alternative splicing occurs at this locus and three transcript variants encoding three distinct isoforms have been identified.
Synonyms:	MGC12360; PAIP-1

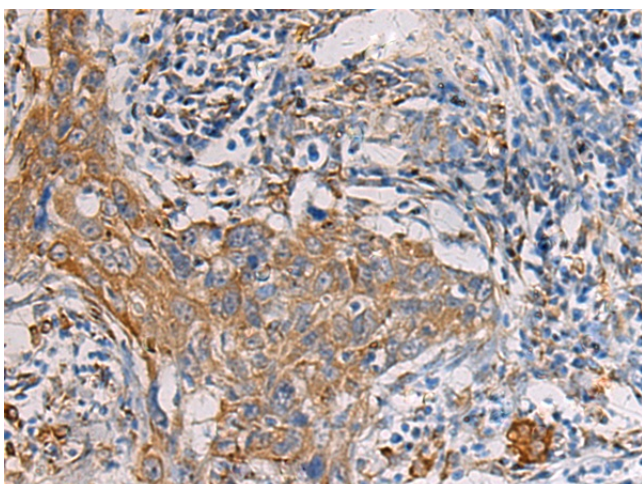


[View online »](#)

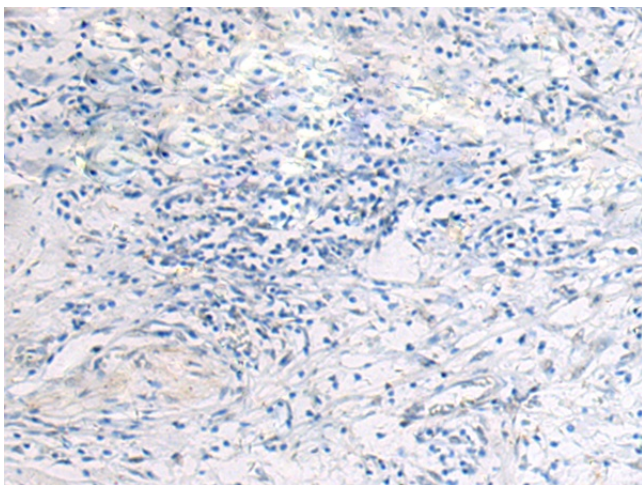
Product images:



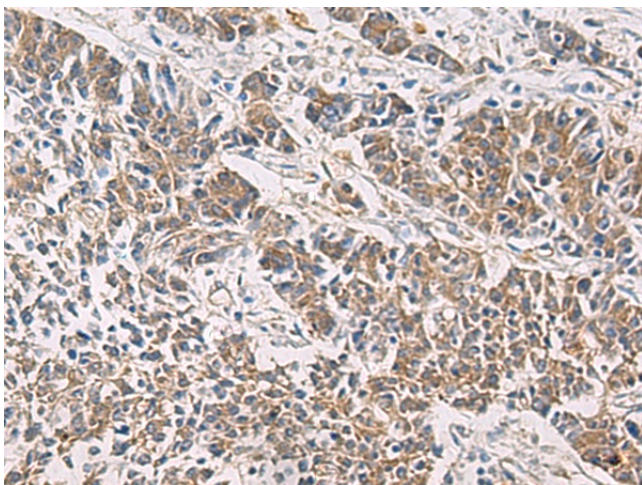
Gel: 8%SDS-PAGE
 Lysate: 40 µg
 Lane 1-5: HepG2
 293T
 PC3 cell
 Mouse liver tissue and Mouse kidney tissue
 lysates
 Primary antibody: TA366549 (PAIP1 Antibody) at
 dilution 1/800
 Secondary antibody: Goat anti rabbit IgG at
 1/5000 dilution
 Exposure time: 10 seconds



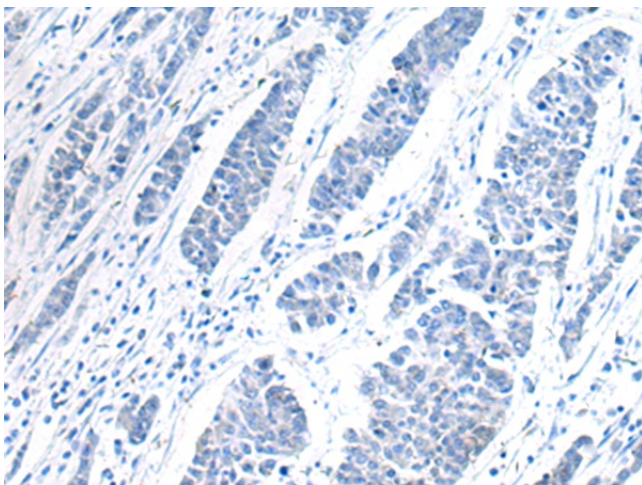
Immunohistochemistry of paraffin-embedded
 Human esophagus cancer tissue using TA366549
 (PAIP1 Antibody) at dilution 1/60 (Original
 magnification: ×200)



Immunohistochemistry of paraffin-embedded Human esophagus cancer tissue using TA366549 (PAIP1 Antibody) at dilution 1/60, treated with fusion protein. (Original magnification: $\times 200$)



Immunohistochemistry of paraffin-embedded Human colorectal cancer tissue using TA366549 (PAIP1 Antibody) at dilution 1/60 (Original magnification: $\times 200$)



Immunohistochemistry of paraffin-embedded Human colorectal cancer tissue using TA366549 (PAIP1 Antibody) at dilution 1/60, treated with fusion protein. (Original magnification: $\times 200$)