

## Product datasheet for **TA366547**

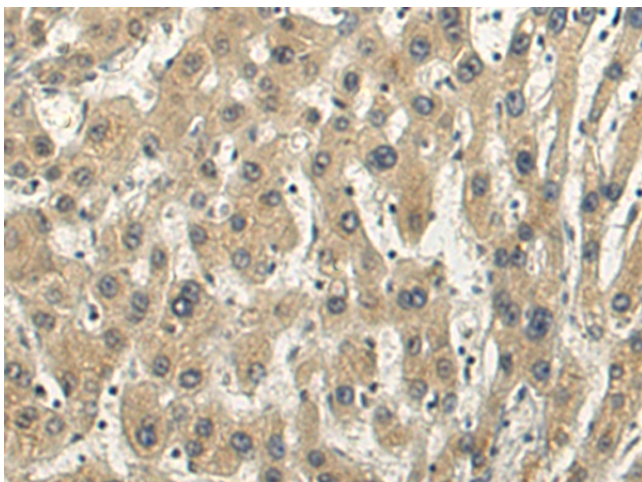
### STOML1 Rabbit Polyclonal Antibody

#### Product data:

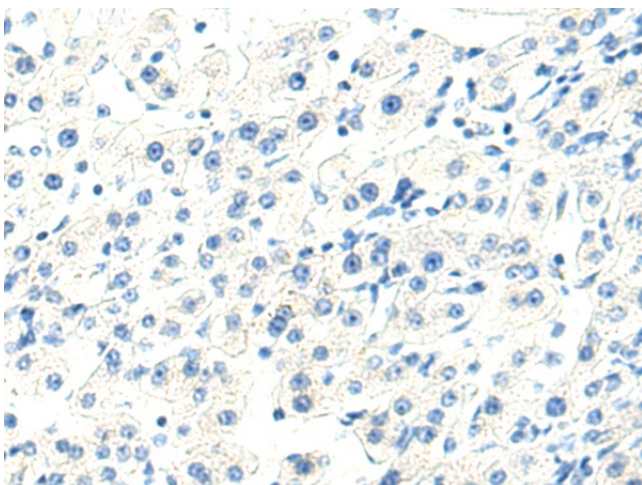
Product Type:	Primary Antibodies
Applications:	IHC
Recommended Dilution:	IHC: 150-300 Positive control: Human liver cancer Predicted cell location: Cytoplasm
Reactivity:	Human, Mouse
Host:	Rabbit
Isotype:	IgG
Clonality:	Polyclonal
Immunogen:	Fusion protein of human STOML1
Formulation:	pH7.4 PBS, 0.05% NaN <sub>3</sub> , 40% Glycerol
Concentration:	lot specific
Purification:	Antigen affinity purification
Conjugation:	Unconjugated
Storage:	Store at -20°C.
Stability:	1 year
Gene Name:	stomatin like 1
Database Link:	<a href="#">Entrez Gene 9399 Human Q9UBI4</a>
Background:	May play a role in cholesterol transfer to late endosomes (PubMed:19696025). May play a role in modulating membrane acid-sensing ion channels. Can specifically inhibit proton-gated current of ASIC1 isoform 1. Can increase inactivation speed of ASIC3. May be involved in regulation of proton sensing in dorsal root ganglions (By similarity). May play a role in protecting FBXW7 isoform 3 from degradation (PubMed:23082202).
Synonyms:	FLJ36370; hUNC-24; SLP-1; SLP1; STORP; UNC24



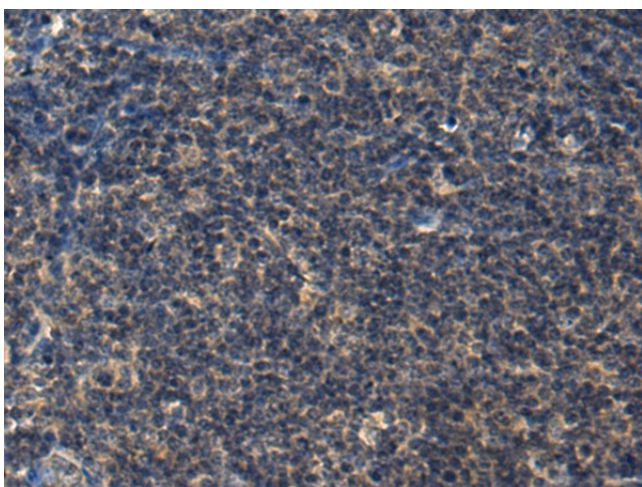
[View online »](#)

**Product images:**

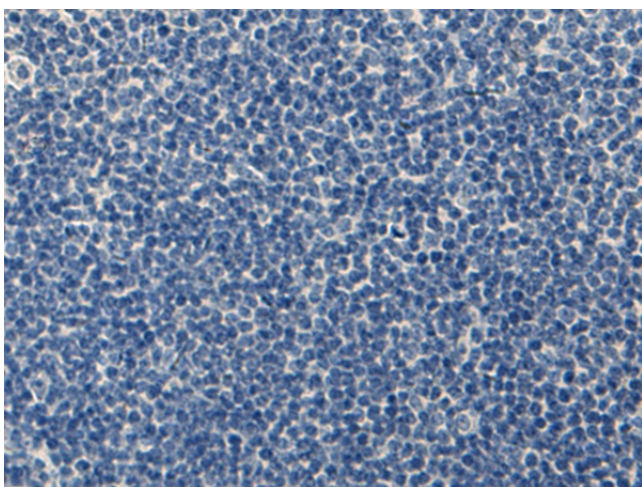
Immunohistochemistry of paraffin-embedded Human liver cancer tissue using TA366547 (STOML1 Antibody) at dilution 1/200 (Original magnification:  $\times 200$ )



Immunohistochemistry of paraffin-embedded Human liver cancer tissue using TA366547 (STOML1 Antibody) at dilution 1/200, treated with fusion protein. (Original magnification:  $\times 200$ )



Immunohistochemistry of paraffin-embedded Human tonsil tissue using TA366547 (STOML1 Antibody) at dilution 1/200 (Original magnification:  $\times 200$ )



Immunohistochemistry of paraffin-embedded Human tonsil tissue using TA366547 (STOML1 Antibody) at dilution 1/200, treated with fusion protein. (Original magnification:  $\times 200$ )