

Product datasheet for **TA366545S**

EFCAB4B (CRACR2A) Rabbit Polyclonal Antibody

Product data:

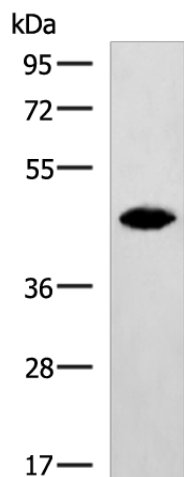
Product Type:	Primary Antibodies
Applications:	IHC, WB
Recommended Dilution:	WB: 500-2000 WB positive control: 293T cell lysate IHC: 150-300 Positive control: Human colorectal cancer Predicted cell location: Cytoplasm and Cell membrane
Reactivity:	Human
Host:	Rabbit
Isotype:	IgG
Clonality:	Polyclonal
Immunogen:	Fusion protein of human CRACR2A
Formulation:	pH7.4 PBS, 0.05% NaN ₃ , 40% Glycerol
Purification:	Antigen affinity purification
Conjugation:	Unconjugated
Storage:	Store at -20°C.
Stability:	1 year
Predicted Protein Size:	46 kDa
Gene Name:	calcium release activated channel regulator 2A
Database Link:	Entrez Gene 84766 Human Q9BSW2

Background: Ca²⁺-binding protein that plays a key role in store-operated Ca²⁺ entry (SOCE) in T-cells by regulating CRAC channel activation. Acts as a cytoplasmic calcium-sensor that facilitates the clustering of ORAI1 and STIM1 at the junctional regions between the plasma membrane and the endoplasmic reticulum upon low Ca²⁺ concentration. It thereby regulates CRAC channel activation, including translocation and clustering of ORAI1 and STIM1. Upon increase of cytoplasmic Ca²⁺ resulting from opening of CRAC channels, dissociates from ORAI1 and STIM1, thereby destabilizing the ORAI1-STIM1 complex.

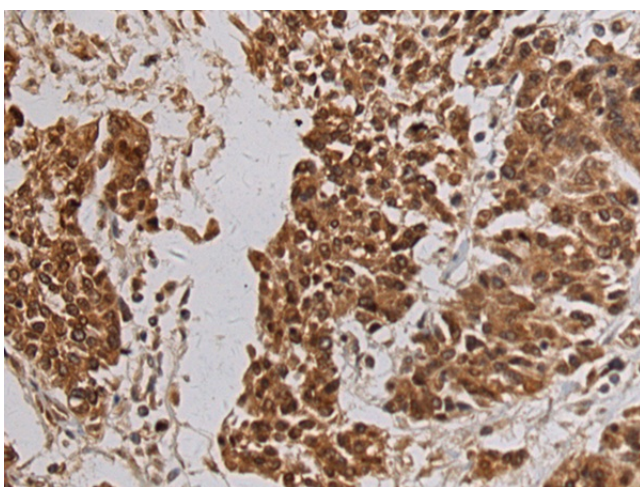


[View online »](#)

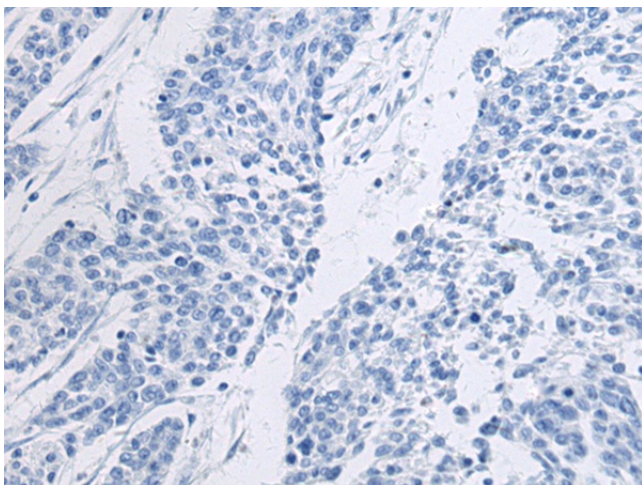
Product images:



Gel: 8%SDS-PAGE
Lysate: 40 µg
Lane: 293T cell lysate
Primary antibody: [TA366545] (CRACR2A Antibody) at dilution 1/900
Secondary antibody: Goat anti rabbit IgG at 1/5000 dilution
Exposure time: 1 minute



Immunohistochemistry of paraffin-embedded Human colorectal cancer tissue using [TA366545] (CRACR2A Antibody) at dilution 1/105 (Original magnification: ×200)



Immunohistochemistry of paraffin-embedded Human colorectal cancer tissue using [TA366545] (CRACR2A Antibody) at dilution 1/105, treated with fusion protein. (Original magnification: ×200)