

Product datasheet for **TA366543**

EBP1 (PA2G4) Rabbit Polyclonal Antibody

Product data:

| | |
|-------------------------|---|
| Product Type: | Primary Antibodies |
| Applications: | IHC, WB |
| Recommended Dilution: | WB: 500-2000 WB positive control: 293T and K562 cell lysates IHC: 50-200 Positive control: Human colorectal cancer Predicted cell location: Cytoplasm |
| Reactivity: | Human, Mouse, Rat |
| Host: | Rabbit |
| Isotype: | IgG |
| Clonality: | Polyclonal |
| Immunogen: | Fusion protein of human PA2G4 |
| Formulation: | pH7.4 PBS, 0.05% NaN ₃ , 40% Glycerol |
| Concentration: | lot specific |
| Purification: | Antigen affinity purification |
| Conjugation: | Unconjugated |
| Storage: | Store at -20°C. |
| Stability: | 1 year |
| Predicted Protein Size: | 44 kDa |
| Gene Name: | proliferation-associated 2G4 |
| Database Link: | Entrez Gene 5036 Human Q9UQ80 |



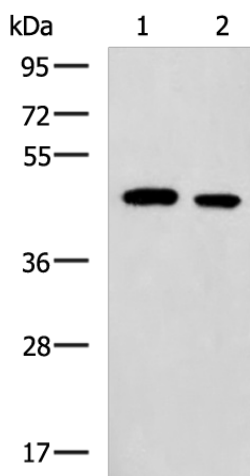
[View online »](#)

Background:

This gene encodes an RNA-binding protein that is involved in growth regulation. This protein is present in pre-ribosomal ribonucleoprotein complexes and may be involved in ribosome assembly and the regulation of intermediate and late steps of rRNA processing. This protein can interact with the cytoplasmic domain of the ErbB3 receptor and may contribute to transducing growth regulatory signals. This protein is also a transcriptional co-repressor of androgen receptor-regulated genes and other cell cycle regulatory genes through its interactions with histone deacetylases. This protein has been implicated in growth inhibition and the induction of differentiation of human cancer cells. Six pseudogenes, located on chromosomes 3, 6, 9, 18, 20 and X, have been identified.

Synonyms:

EBP1; HG4-1; p38-2G4

Product images:

Gel: 8%SDS-PAGE

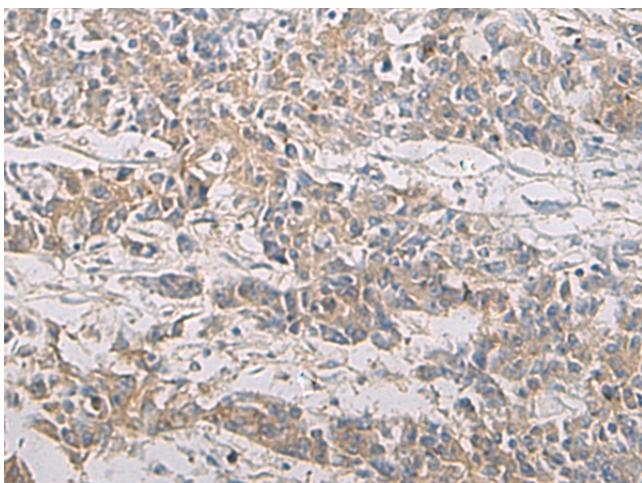
Lysate: 40 µg

Lane 1-2: 293T and K562 cell lysates

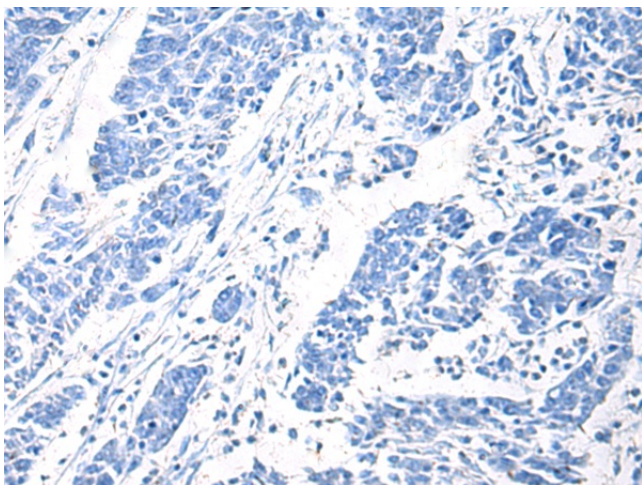
Primary antibody: TA366543 (PA2G4 Antibody) at dilution 1/800

Secondary antibody: Goat anti rabbit IgG at 1/5000 dilution

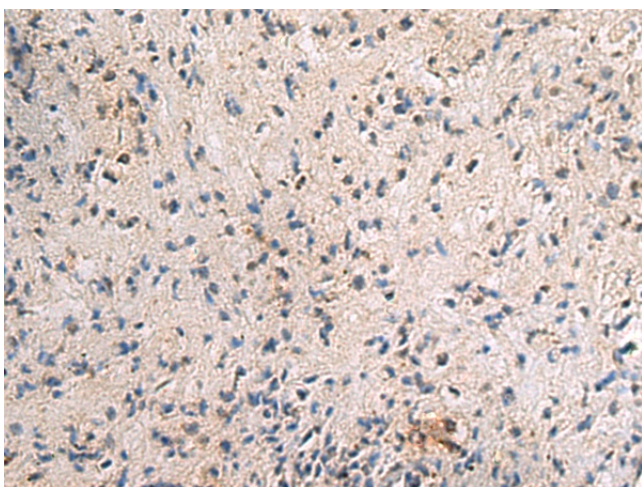
Exposure time: 1 minute



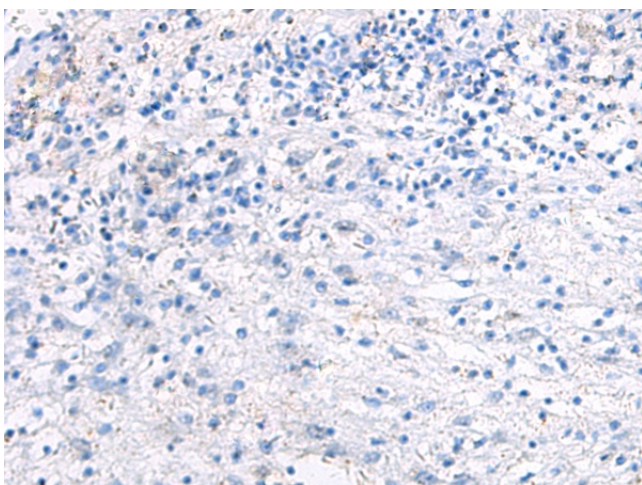
Immunohistochemistry of paraffin-embedded Human colorectal cancer tissue using TA366543 (PA2G4 Antibody) at dilution 1/60 (Original magnification: ×200)



Immunohistochemistry of paraffin-embedded Human colorectal cancer tissue using TA366543 (PA2G4 Antibody) at dilution 1/60, treated with fusion protein. (Original magnification: $\times 200$)



Immunohistochemistry of paraffin-embedded Human brain tissue using TA366543 (PA2G4 Antibody) at dilution 1/60 (Original magnification: $\times 200$)



Immunohistochemistry of paraffin-embedded Human brain tissue using TA366543 (PA2G4 Antibody) at dilution 1/60, treated with fusion protein. (Original magnification: $\times 200$)