

## Product datasheet for **TA366539S**

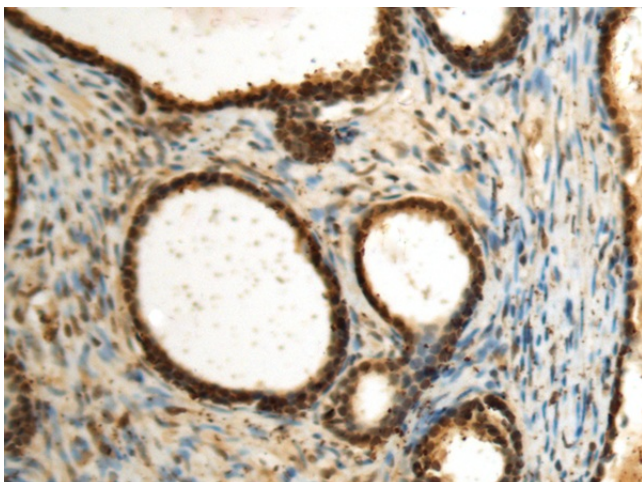
### Selenophosphate synthetase 1 (SEPHS1) Rabbit Polyclonal Antibody

#### Product data:

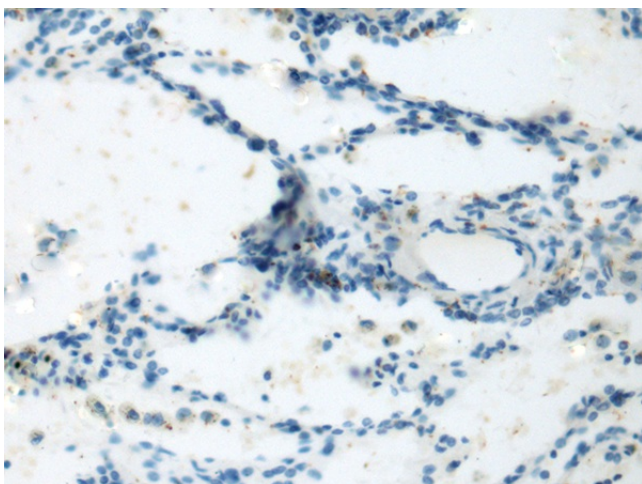
Product Type:	Primary Antibodies
Applications:	IHC
Recommended Dilution:	IHC: 100-300 Positive control: Human prostate cancer Predicted cell location: Nucleus
Reactivity:	Human, Mouse
Host:	Rabbit
Isotype:	IgG
Clonality:	Polyclonal
Immunogen:	Fusion protein of human SEPHS1
Formulation:	pH7.4 PBS, 0.05% NaN <sub>3</sub> , 40% Glycerol
Purification:	Antigen affinity purification
Conjugation:	Unconjugated
Storage:	Store at -20°C.
Stability:	1 year
Gene Name:	selenophosphate synthetase 1
Database Link:	<a href="#">Entrez Gene 22929 Human P49903</a>
Background:	This gene encodes an enzyme that synthesizes selenophosphate from selenide and ATP. Selenophosphate is the selenium donor used to synthesize selenocysteine, which is co-translationally incorporated into selenoproteins at in-frame UGA codons.
Synonyms:	MGC4980; SELD; SPS; SPS1



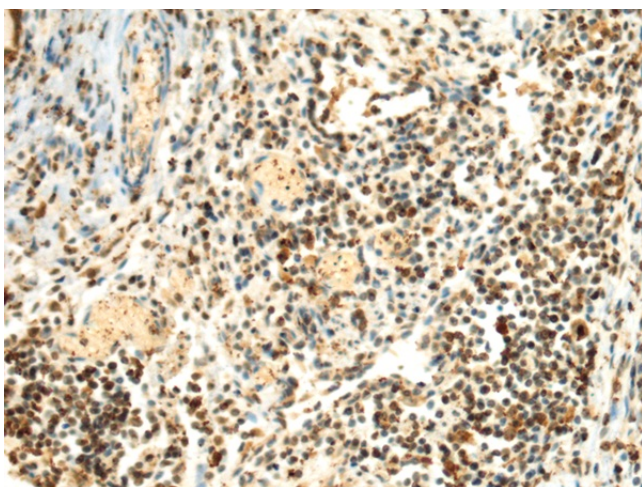
[View online »](#)

**Product images:**

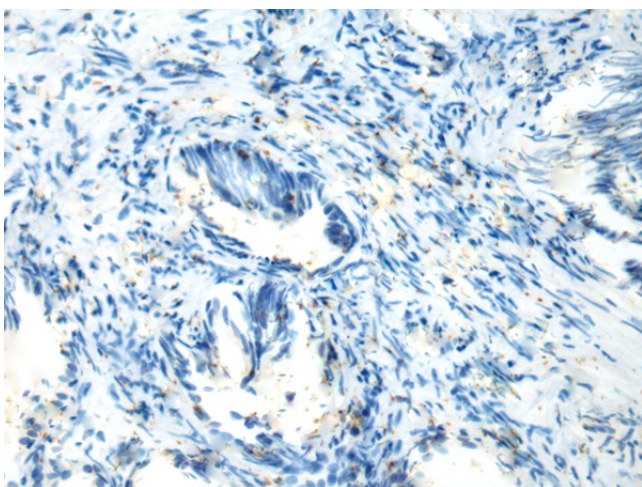
Immunohistochemistry of paraffin-embedded Human prostate cancer tissue using [TA366539] (SEPHS1 Antibody) at dilution 1/85 (Original magnification:  $\times 200$ )



Immunohistochemistry of paraffin-embedded Human prostate cancer tissue using [TA366539] (SEPHS1 Antibody) at dilution 1/85, treated with fusion protein. (Original magnification:  $\times 200$ )



Immunohistochemistry of paraffin-embedded Human lung cancer tissue using [TA366539] (SEPHS1 Antibody) at dilution 1/85 (Original magnification:  $\times 200$ )



Immunohistochemistry of paraffin-embedded Human lung cancer tissue using [TA366539] (SEPHS1 Antibody) at dilution 1/85, treated with fusion protein. (Original magnification:  $\times 200$ )