

Product datasheet for **TA366538S**

Sarcosine Oxidase (PIPOX) Rabbit Polyclonal Antibody

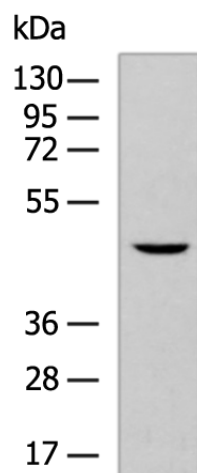
Product data:

| | |
|-------------------------|---|
| Product Type: | Primary Antibodies |
| Applications: | IHC, WB |
| Recommended Dilution: | WB: 200-1000 WB positive control: MCF7 cell lysate IHC: 50-100 Positive control: Human esophagus cancer Predicted cell location: Peroxisome |
| Reactivity: | Human, Mouse |
| Host: | Rabbit |
| Isotype: | IgG |
| Clonality: | Polyclonal |
| Immunogen: | Fusion protein of human PIPOX |
| Formulation: | pH7.4 PBS, 0.05% NaN ₃ , 40% Glycerol |
| Purification: | Antigen affinity purification |
| Conjugation: | Unconjugated |
| Storage: | Store at -20°C. |
| Stability: | 1 year |
| Predicted Protein Size: | 44 kDa |
| Gene Name: | pipecolic acid and sarcosine oxidase |
| Database Link: | Entrez Gene 51268 Human Q9P0Z9 |
| Background: | Metabolizes sarcosine, L-pipecolic acid and L-proline. |
| Synonyms: | LPIPOX; PSO |

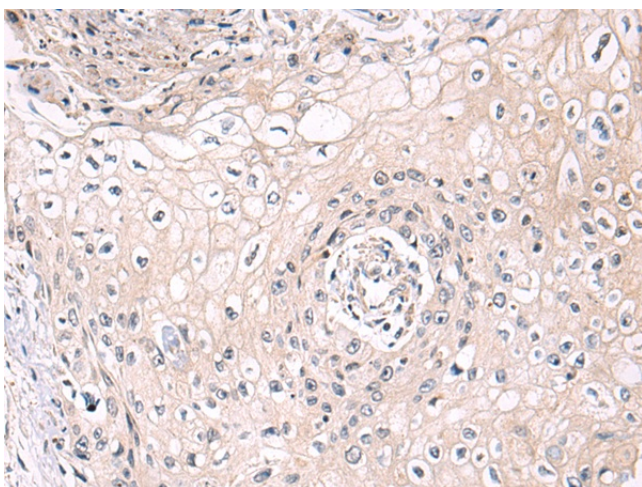


[View online »](#)

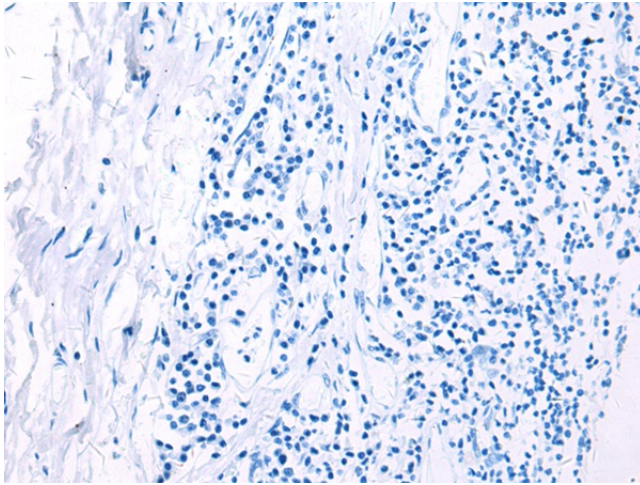
Product images:



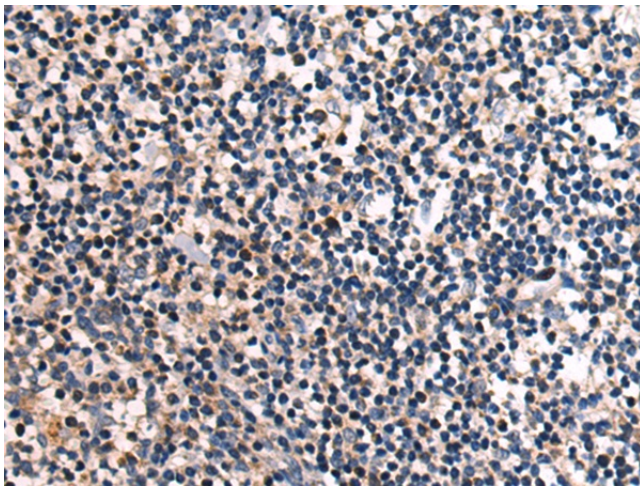
Gel: 8%SDS-PAGE
Lysate: 40 µg
Lane: MCF7 cell lysate
Primary antibody: [TA366538] (PIPOX Antibody) at dilution 1/250
Secondary antibody: Goat anti rabbit IgG at 1/5000 dilution
Exposure time: 90 seconds



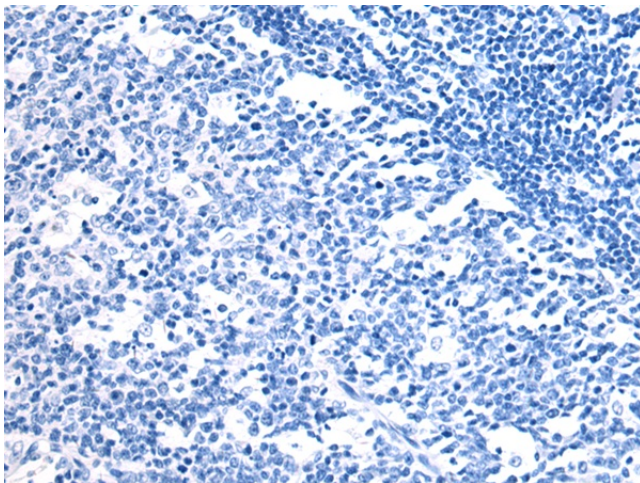
Immunohistochemistry of paraffin-embedded Human esophagus cancer tissue using [TA366538] (PIPOX Antibody) at dilution 1/80 (Original magnification: ×200)



Immunohistochemistry of paraffin-embedded Human esophagus cancer tissue using [TA366538] (PIPOX Antibody) at dilution 1/80, treated with fusion protein. (Original magnification: $\times 200$)



Immunohistochemistry of paraffin-embedded Human tonsil tissue using [TA366538] (PIPOX Antibody) at dilution 1/80 (Original magnification: $\times 200$)



Immunohistochemistry of paraffin-embedded Human tonsil tissue using [TA366538] (PIPOX Antibody) at dilution 1/80, treated with fusion protein. (Original magnification: $\times 200$)