

Product datasheet for **TA366537**

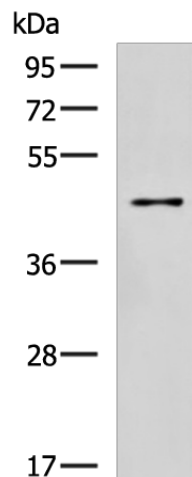
SLC30A3 Rabbit Polyclonal Antibody

Product data:

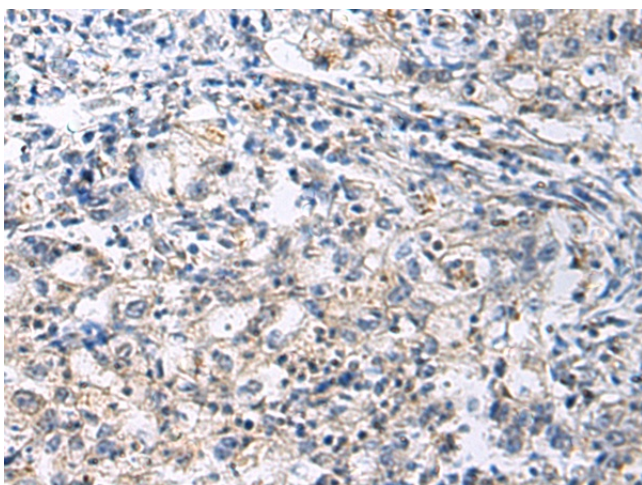
Product Type:	Primary Antibodies
Applications:	IHC, WB
Recommended Dilution:	WB: 500-2000 WB positive control: 293T cell lysate IHC: 50-200 Positive control: Human gastric cancer Predicted cell location: Cytoplasm
Reactivity:	Human, Mouse, Rat
Host:	Rabbit
Isotype:	IgG
Clonality:	Polyclonal
Immunogen:	Fusion protein of human SLC30A3
Formulation:	pH7.4 PBS, 0.05% NaN ₃ , 40% Glycerol
Concentration:	lot specific
Purification:	Antigen affinity purification
Conjugation:	Unconjugated
Storage:	Store at -20°C.
Stability:	1 year
Predicted Protein Size:	42 kDa
Gene Name:	solute carrier family 30 member 3
Database Link:	Entrez Gene 7781 Human Q99726
Background:	Involved in accumulation of zinc in synaptic vesicles.
Synonyms:	ZnT-3; ZNT3



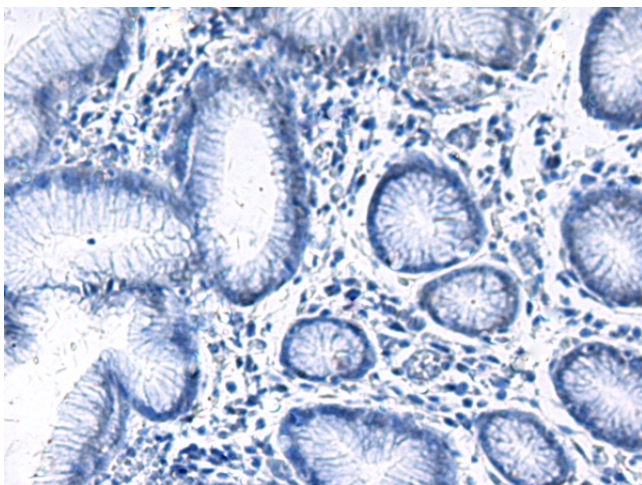
[View online »](#)

Product images:

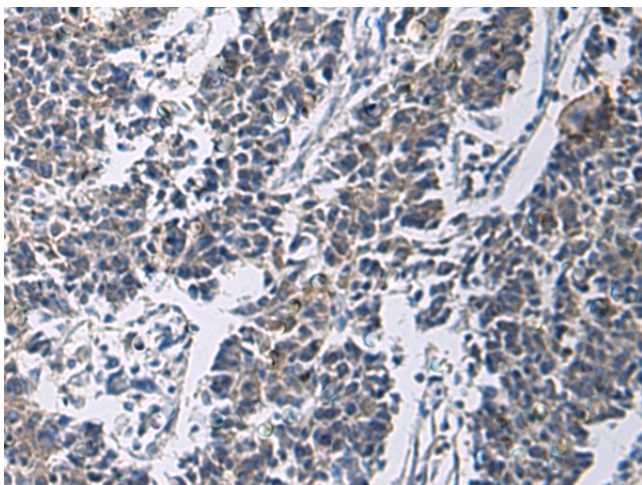
Gel: 8%SDS-PAGE
Lysate: 40 μ g
Lane: 293T cell lysate
Primary antibody: TA366537 (SLC30A3 Antibody) at dilution 1/700
Secondary antibody: Goat anti rabbit IgG at 1/5000 dilution
Exposure time: 30 seconds



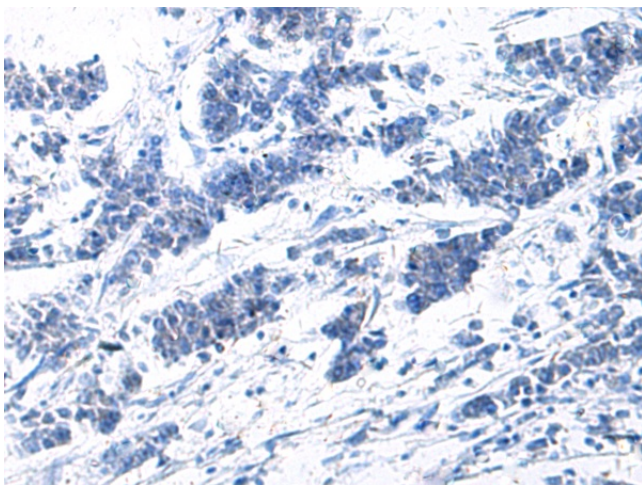
Immunohistochemistry of paraffin-embedded Human gastric cancer tissue using TA366537 (SLC30A3 Antibody) at dilution 1/70 (Original magnification: \times 200)



Immunohistochemistry of paraffin-embedded Human gastric cancer tissue using TA366537 (SLC30A3 Antibody) at dilution 1/70, treated with fusion protein. (Original magnification: $\times 200$)



Immunohistochemistry of paraffin-embedded Human colorectal cancer tissue using TA366537 (SLC30A3 Antibody) at dilution 1/70 (Original magnification: $\times 200$)



Immunohistochemistry of paraffin-embedded Human colorectal cancer tissue using TA366537 (SLC30A3 Antibody) at dilution 1/70, treated with fusion protein. (Original magnification: $\times 200$)