

Product datasheet for **TA366527S**

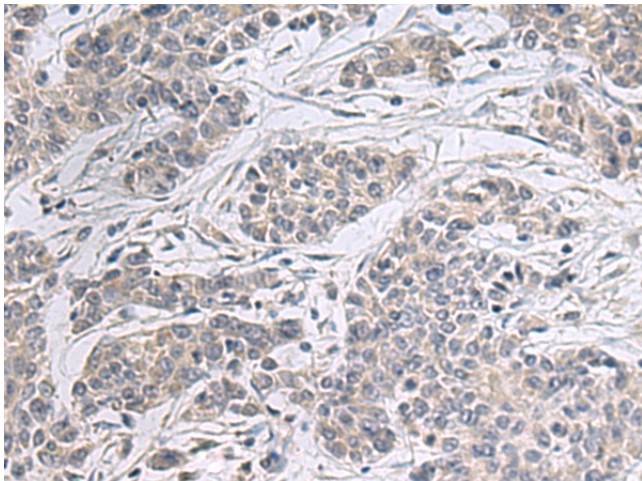
PPM1K Rabbit Polyclonal Antibody

Product data:

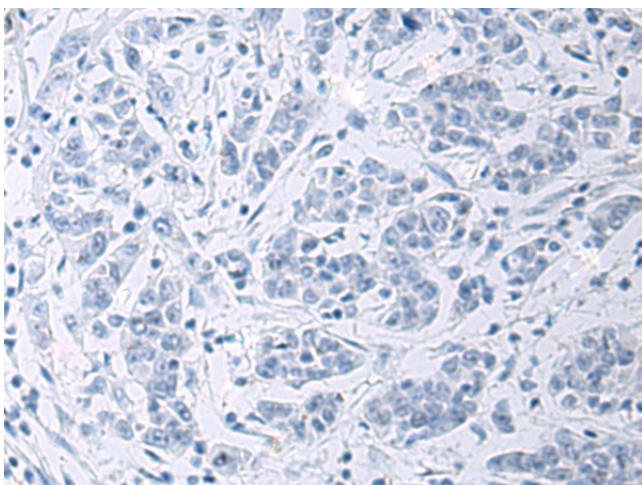
Product Type:	Primary Antibodies
Applications:	IHC
Recommended Dilution:	IHC: 50-100 Positive control: Human colorectal cancer Predicted cell location: Cytoplasm
Reactivity:	Human, Mouse
Host:	Rabbit
Isotype:	IgG
Clonality:	Polyclonal
Immunogen:	Fusion protein of human PPM1K
Formulation:	pH7.4 PBS, 0.05% NaN ₃ , 40% Glycerol
Purification:	Antigen affinity purification
Conjugation:	Unconjugated
Storage:	Store at -20°C.
Stability:	1 year
Gene Name:	protein phosphatase, Mg ²⁺ /Mn ²⁺ dependent 1K
Database Link:	Entrez Gene 152926 Human Q8N3J5
Background:	This gene encodes a member of the PPM family of Mn ²⁺ /Mg ²⁺ -dependent protein phosphatases. The encoded protein, essential for cell survival and development, is targeted to the mitochondria where it plays a key role in regulation of the mitochondrial permeability transition pore.
Synonyms:	DKFZp667B084; DKFZp761G058; hPTMP; PP2C-kappa; PP2Ckappa; PP2Cm; PTMP; UG0882E07



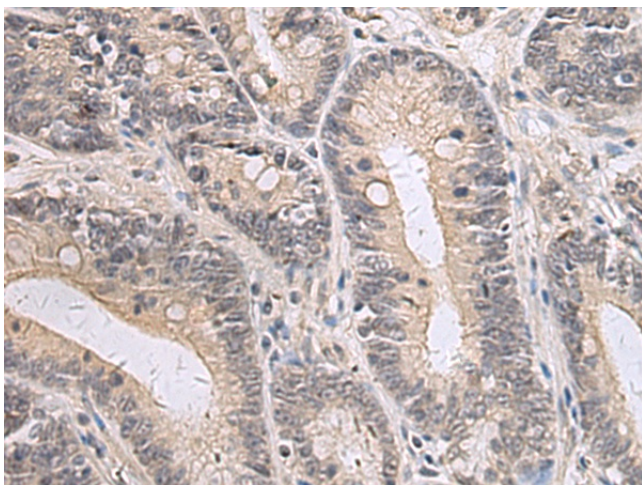
[View online »](#)

Product images:

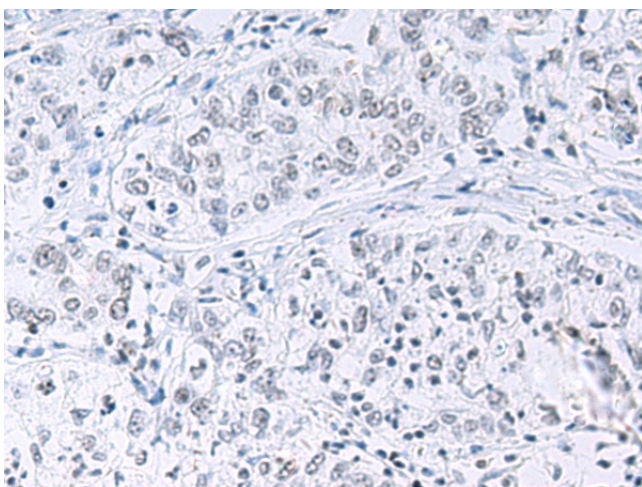
Immunohistochemistry of paraffin-embedded Human colorectal cancer tissue using [TA366527] (PPM1K Antibody) at dilution 1/55 (Original magnification: ×200)



Immunohistochemistry of paraffin-embedded Human colorectal cancer tissue using [TA366527] (PPM1K Antibody) at dilution 1/55, treated with fusion protein. (Original magnification: ×200)



Immunohistochemistry of paraffin-embedded Human gastric cancer tissue using [TA366527] (PPM1K Antibody) at dilution 1/55 (Original magnification: $\times 200$)



Immunohistochemistry of paraffin-embedded Human gastric cancer tissue using [TA366527] (PPM1K Antibody) at dilution 1/55, treated with fusion protein. (Original magnification: $\times 200$)