

Product datasheet for **TA366526S**

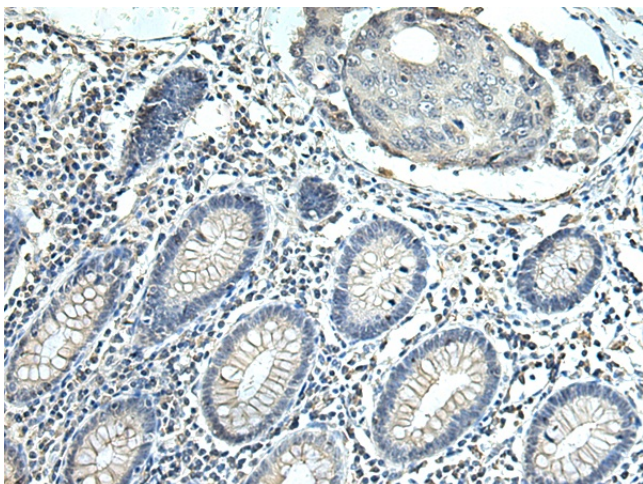
C2orf18 (SLC35F6) Rabbit Polyclonal Antibody

Product data:

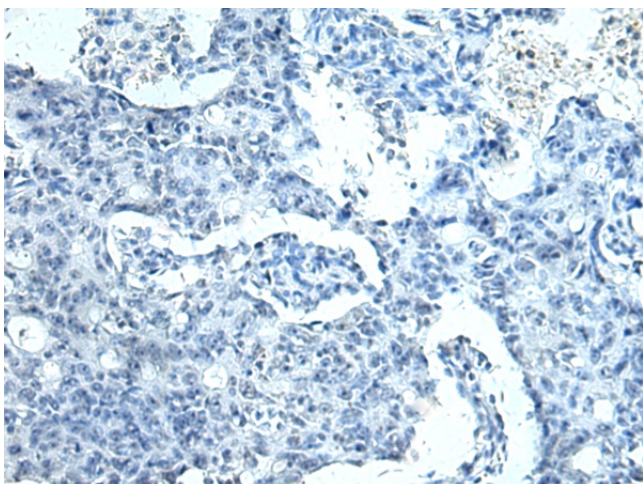
Product Type:	Primary Antibodies
Applications:	IHC
Recommended Dilution:	IHC: 100-300 Positive control: Human colorectal cancer Predicted cell location: Cytoplasm
Reactivity:	Human, Mouse, Rat
Host:	Rabbit
Isotype:	IgG
Clonality:	Polyclonal
Immunogen:	Fusion protein of human SLC35F6
Formulation:	pH7.4 PBS, 0.05% NaN ₃ , 40% Glycerol
Purification:	Antigen affinity purification
Conjugation:	Unconjugated
Storage:	Store at -20°C.
Stability:	1 year
Gene Name:	solute carrier family 35 member F6
Database Link:	Entrez Gene 54978 Human Q8N357
Background:	Involved in the maintenance of mitochondrial membrane potential in pancreatic ductal adenocarcinoma (PDAC) cells. Promotes pancreatic ductal adenocarcinoma (PDAC) cell growth. May play a role as a nucleotide-sugar transporter.
Synonyms:	4930471M23Rik; 5730478O19Rik; P40; RGD1309228; Tango9



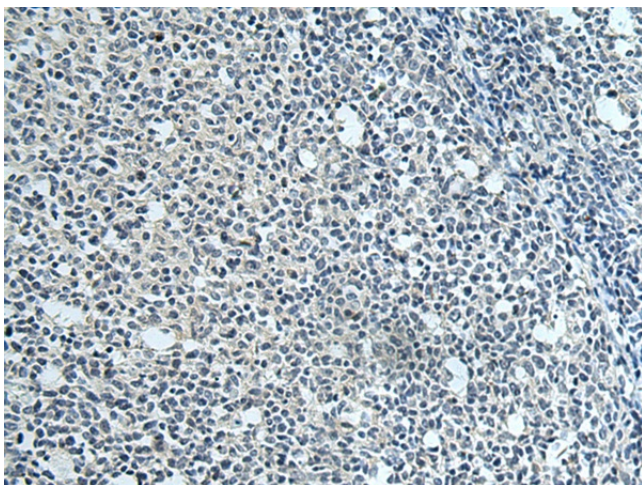
[View online »](#)

Product images:

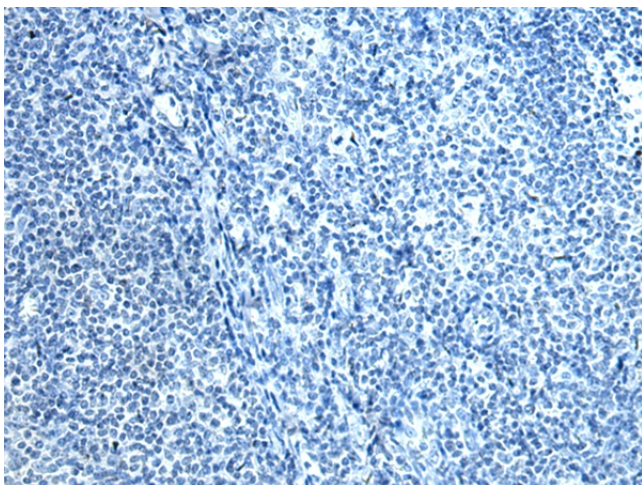
Immunohistochemistry of paraffin-embedded Human colorectal cancer tissue using [TA366526] (SLC35F6 Antibody) at dilution 1/115 (Original magnification: x200)



Immunohistochemistry of paraffin-embedded Human colorectal cancer tissue using [TA366526] (SLC35F6 Antibody) at dilution 1/115, treated with fusion protein. (Original magnification: x200)



Immunohistochemistry of paraffin-embedded Human tonsil tissue using [TA366526] (SLC35F6 Antibody) at dilution 1/115 (Original magnification: x200)



Immunohistochemistry of paraffin-embedded Human tonsil tissue using [TA366526] (SLC35F6 Antibody) at dilution 1/115, treated with fusion protein. (Original magnification: x200)