

Product datasheet for **TA366526**

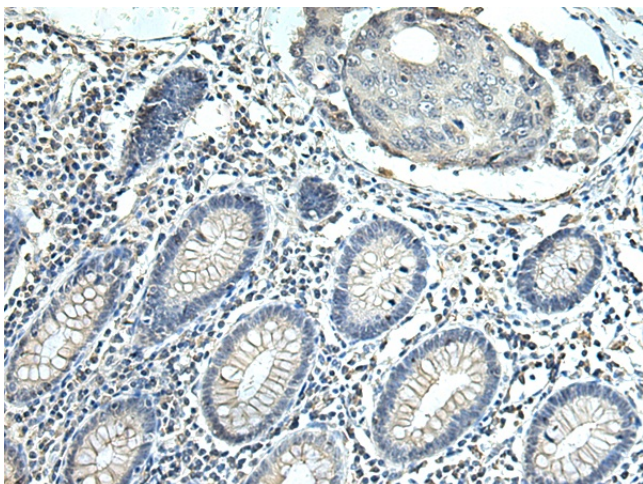
C2orf18 (SLC35F6) Rabbit Polyclonal Antibody

Product data:

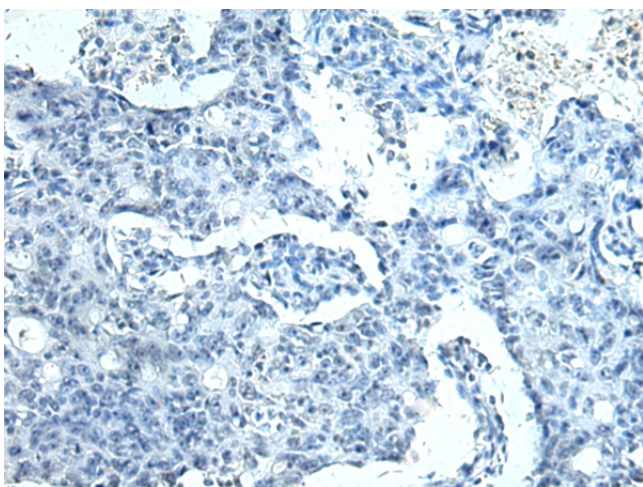
| | |
|------------------------------|--|
| Product Type: | Primary Antibodies |
| Applications: | IHC |
| Recommended Dilution: | IHC: 100-300 Positive control: Human colorectal cancer Predicted cell location: Cytoplasm |
| Reactivity: | Human, Mouse, Rat |
| Host: | Rabbit |
| Isotype: | IgG |
| Clonality: | Polyclonal |
| Immunogen: | Fusion protein of human SLC35F6 |
| Formulation: | pH7.4 PBS, 0.05% NaN ₃ , 40% Glycerol |
| Concentration: | lot specific |
| Purification: | Antigen affinity purification |
| Conjugation: | Unconjugated |
| Storage: | Store at -20°C. |
| Stability: | 1 year |
| Gene Name: | solute carrier family 35 member F6 |
| Database Link: | Entrez Gene 54978 Human Q8N357 |
| Background: | Involved in the maintenance of mitochondrial membrane potential in pancreatic ductal adenocarcinoma (PDAC) cells. Promotes pancreatic ductal adenocarcinoma (PDAC) cell growth. May play a role as a nucleotide-sugar transporter. |
| Synonyms: | 4930471M23Rik; 5730478O19Rik; P40; RGD1309228; Tango9 |



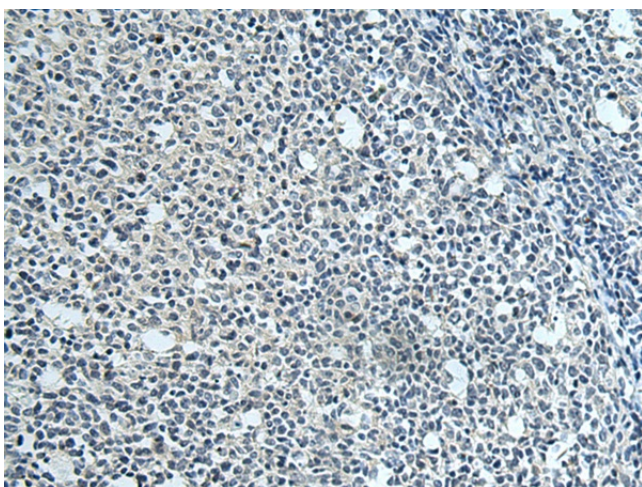
[View online »](#)

Product images:

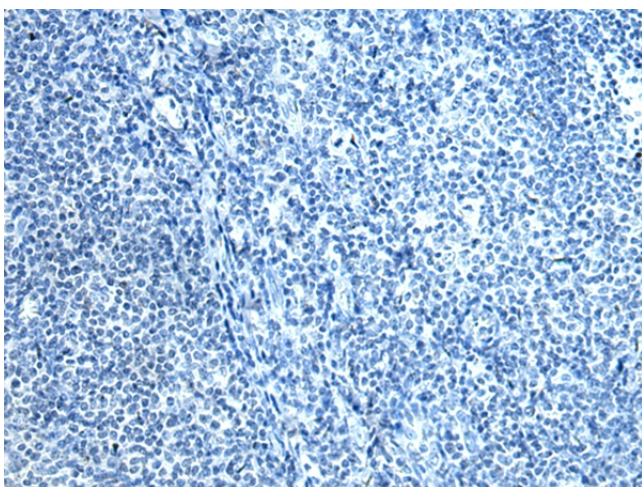
Immunohistochemistry of paraffin-embedded Human colorectal cancer tissue using TA366526 (SLC35F6 Antibody) at dilution 1/115 (Original magnification: ×200)



Immunohistochemistry of paraffin-embedded Human colorectal cancer tissue using TA366526 (SLC35F6 Antibody) at dilution 1/115, treated with fusion protein. (Original magnification: ×200)



Immunohistochemistry of paraffin-embedded Human tonsil tissue using TA366526 (SLC35F6 Antibody) at dilution 1/115 (Original magnification: $\times 200$)



Immunohistochemistry of paraffin-embedded Human tonsil tissue using TA366526 (SLC35F6 Antibody) at dilution 1/115, treated with fusion protein. (Original magnification: $\times 200$)