

## Product datasheet for **TA366524**

### NHLRC2 Rabbit Polyclonal Antibody

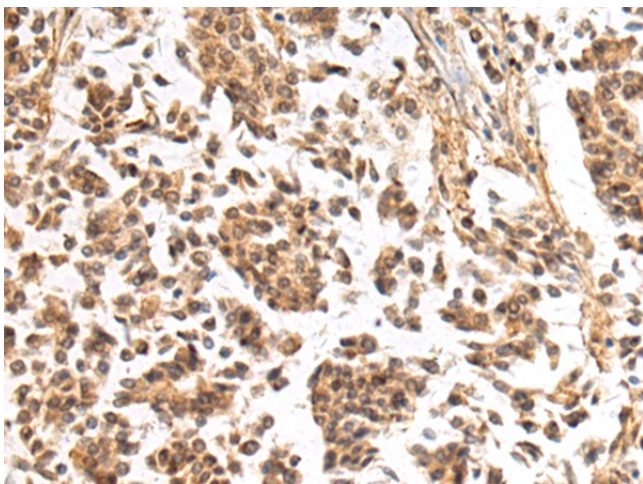
#### Product data:

Product Type:	Primary Antibodies
Applications:	IHC
Recommended Dilution:	IHC: 50-200 Positive control: Human breast cancer Predicted cell location: Cytoplasm
Reactivity:	Human
Host:	Rabbit
Isotype:	IgG
Clonality:	Polyclonal
Immunogen:	Fusion protein of human NHLRC2
Formulation:	pH7.4 PBS, 0.05% NaN <sub>3</sub> , 40% Glycerol
Concentration:	lot specific
Purification:	Antigen affinity purification
Conjugation:	Unconjugated
Storage:	Store at -20°C.
Stability:	1 year
Gene Name:	NHL repeat containing 2
Database Link:	<a href="#">Entrez Gene 374354 Human Q8NBF2</a>
Background:	The specific function of this protein remains unknown.
Synonyms:	1200003G01Rik; DKFZp779F115; FLJ20147; FLJ25621; FLJ33312; MGC45492

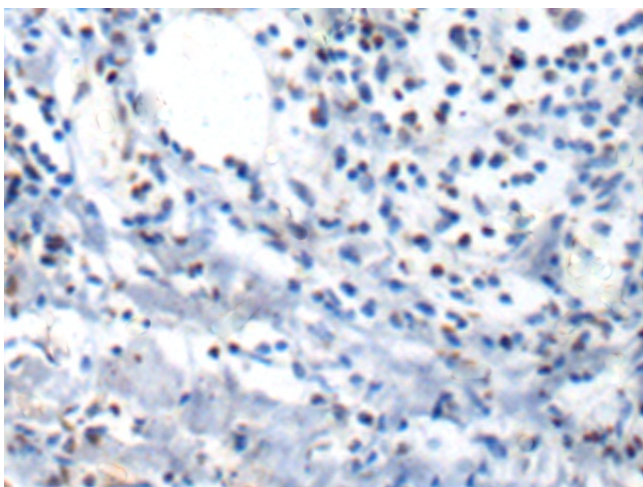


[View online »](#)

## Product images:



Immunohistochemistry of paraffin-embedded Human breast cancer tissue using TA366524 (NHLRC2 Antibody) at dilution 1/40 (Original magnification: ×200)



Immunohistochemistry of paraffin-embedded Human breast cancer tissue using TA366524 (NHLRC2 Antibody) at dilution 1/40, treated with fusion protein. (Original magnification: ×200)