

Product datasheet for **TA366523**

WDR51A (POC1A) Rabbit Polyclonal Antibody

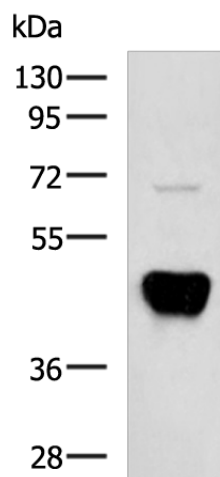
Product data:

Product Type:	Primary Antibodies
Applications:	WB
Recommended Dilution:	WB: 1000-5000 WB positive control: SKOV3 cell lysate
Reactivity:	Human, Mouse
Host:	Rabbit
Isotype:	IgG
Clonality:	Polyclonal
Immunogen:	Fusion protein of human POC1A
Formulation:	pH7.4 PBS, 0.05% NaN ₃ , 40% Glycerol
Concentration:	lot specific
Purification:	Antigen affinity purification
Conjugation:	Unconjugated
Storage:	Store at -20°C.
Stability:	1 year
Predicted Protein Size:	45 kDa
Gene Name:	POC1 centriolar protein A
Database Link:	Entrez Gene 25886 Human Q8NBT0
Background:	POC1 proteins contain an N-terminal WD40 domain and a C-terminal coiled coil domain and are part of centrosomes. They play an important role in basal body and cilia formation. This gene encodes one of the two POC1 proteins found in humans. Mutations in this gene result in short stature, onychodysplasia, facial dysmorphism, and hypotrichosis (SOFT) syndrome.
Synonyms:	2510040D07Rik; RGD1565004; Wdr51a



[View online »](#)

Product images:



Gel: 8%SDS-PAGE
Lysate: 40 μ g
Lane: SKOV3 cell lysate
Primary antibody: TA366523 (POC1A Antibody) at dilution 1/700
Secondary antibody: Goat anti rabbit IgG at 1/5000 dilution
Exposure time: 2 minutes