

## Product datasheet for **TA366519**

### FCRLM1 (FCRLA) Rabbit Polyclonal Antibody

#### Product data:

Product Type:	Primary Antibodies
Applications:	IHC, WB
Recommended Dilution:	WB: 500-2000 WB positive control: Ramos cell lysate IHC: 50-200 Positive control: Human colorectal cancer Predicted cell location: Cytoplasm
Reactivity:	Human
Host:	Rabbit
Isotype:	IgG
Clonality:	Polyclonal
Immunogen:	Fusion protein of human FCRLA
Formulation:	pH7.4 PBS, 0.05% NaN <sub>3</sub> , 40% Glycerol
Concentration:	lot specific
Purification:	Antigen affinity purification
Conjugation:	Unconjugated
Storage:	Store at -20°C.
Stability:	1 year
Predicted Protein Size:	39 kDa
Gene Name:	Fc receptor like A
Database Link:	<a href="#">Entrez Gene 84824 Human Q7L513</a>

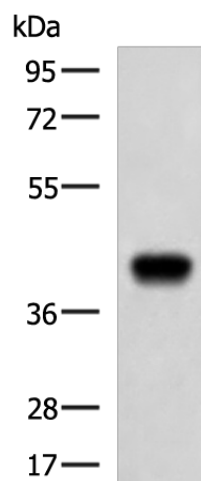
**Background:** This gene encodes a protein similar to receptors for the Fc fragment of gamma immunoglobulin (IgG). These receptors, referred to as FCGRs, mediate the destruction of IgG-coated antigens and of cells induced by antibodies. This encoded protein is selectively expressed in B cells, and may be involved in their development. This protein may also be involved in the development of lymphomas. Multiple alternatively spliced transcript variants that encode different protein isoforms have been described for this gene.



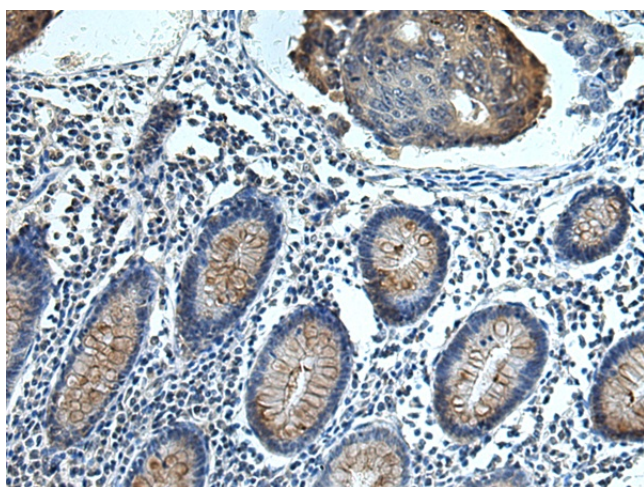
[View online »](#)

**Synonyms:** FCRL; FCRL1; FCRLb; FCRLc1; FCRLc2; FCRLd; FCRLe; FCRLM1; FCRLX; FCRX; FREB; MGC4595; RP11-474I16.5

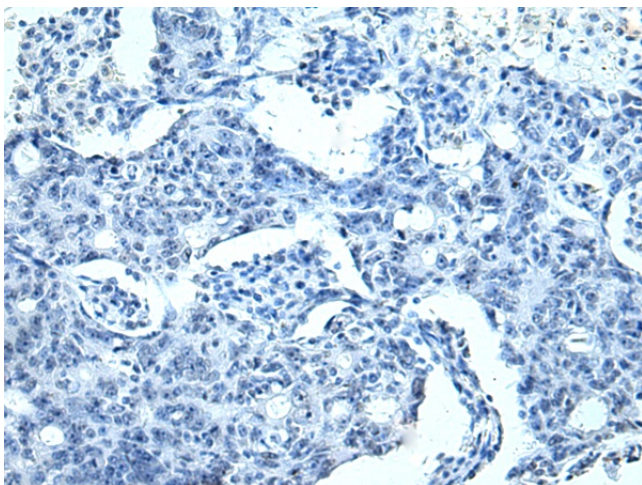
**Product images:**



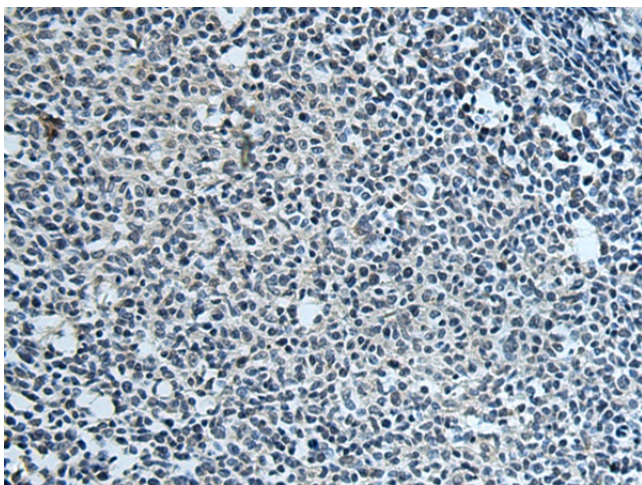
Gel: 8%SDS-PAGE  
 Lysate: 40 µg  
 Lane: Ramos cell lysate  
 Primary antibody: TA366519 (FCRLA Antibody) at dilution 1/750  
 Secondary antibody: Goat anti rabbit IgG at 1/5000 dilution  
 Exposure time: 1 minute



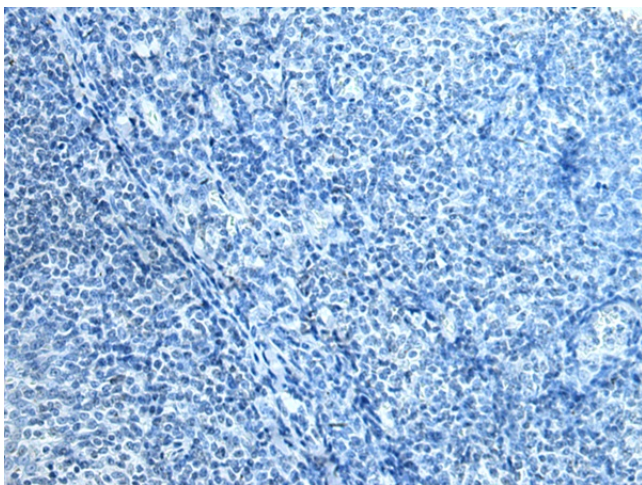
Immunohistochemistry of paraffin-embedded Human colorectal cancer tissue using TA366519 (FCRLA Antibody) at dilution 1/80 (Original magnification: ×200)



Immunohistochemistry of paraffin-embedded Human colorectal cancer tissue using TA366519 (FCRLA Antibody) at dilution 1/80, treated with fusion protein. (Original magnification: ×200)



Immunohistochemistry of paraffin-embedded Human tonsil tissue using TA366519 (FCRLA Antibody) at dilution 1/80 (Original magnification: ×200)



Immunohistochemistry of paraffin-embedded Human tonsil tissue using TA366519 (FCRLA Antibody) at dilution 1/80, treated with fusion protein. (Original magnification: ×200)