

## Product datasheet for **TA366516S**

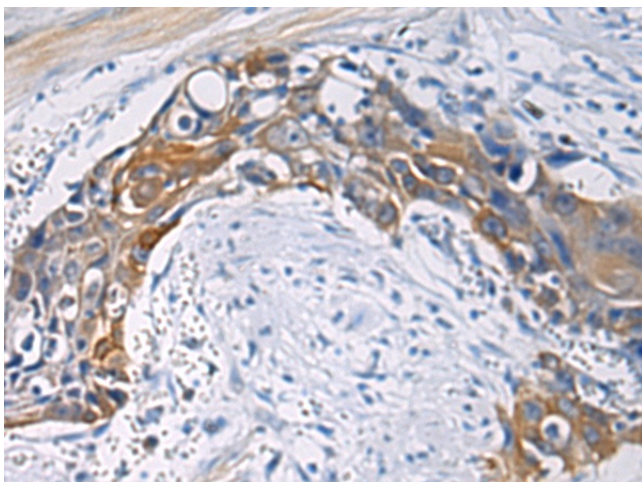
### CEP89 Rabbit Polyclonal Antibody

#### Product data:

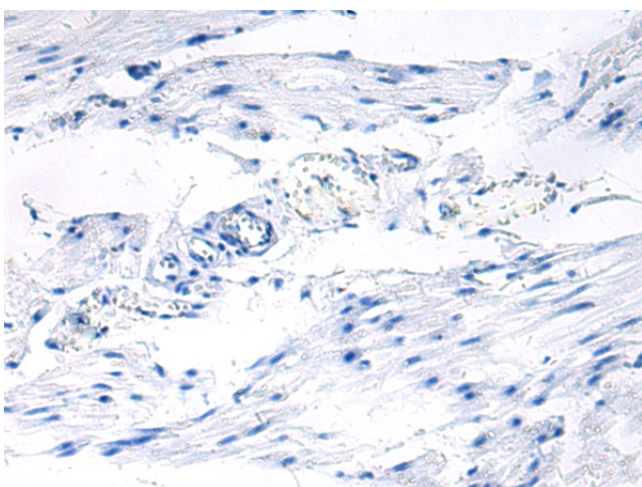
Product Type:	Primary Antibodies
Applications:	IHC
Recommended Dilution:	IHC: 100-300 Positive control: Human esophagus cancer Predicted cell location: Cytoplasm
Reactivity:	Human
Host:	Rabbit
Isotype:	IgG
Clonality:	Polyclonal
Immunogen:	Fusion protein of human CEP89
Formulation:	pH7.4 PBS, 0.05% NaN <sub>3</sub> , 40% Glycerol
Purification:	Antigen affinity purification
Conjugation:	Unconjugated
Storage:	Store at -20°C.
Stability:	1 year
Gene Name:	centrosomal protein 89
Database Link:	<a href="#">Entrez Gene 84902 Human Q96ST8</a>
Background:	Required for ciliogenesis. Also plays a role in mitochondrial metabolism where it may modulate complex IV activity.
Synonyms:	CCDC123



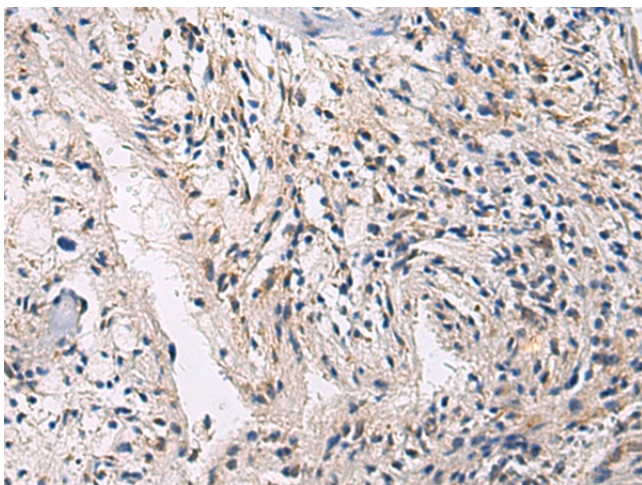
[View online »](#)

**Product images:**

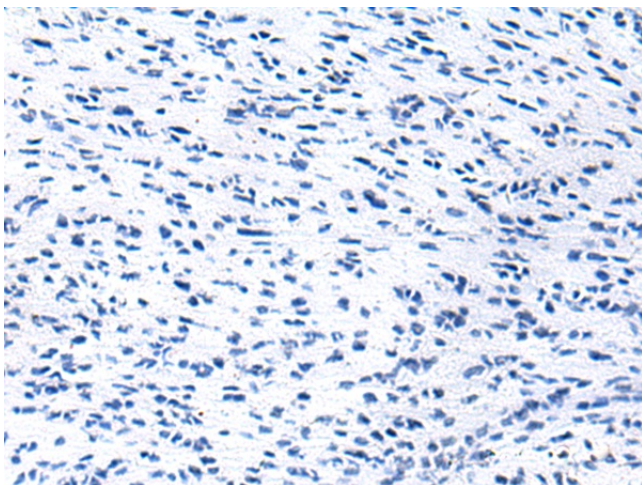
Immunohistochemistry of paraffin-embedded Human esophagus cancer tissue using [TA366516] (CEP89 Antibody) at dilution 1/100 (Original magnification:  $\times 200$ )



Immunohistochemistry of paraffin-embedded Human esophagus cancer tissue using [TA366516] (CEP89 Antibody) at dilution 1/100, treated with fusion protein. (Original magnification:  $\times 200$ )



Immunohistochemistry of paraffin-embedded Human brain tissue using [TA366516] (CEP89 Antibody) at dilution 1/100 (Original magnification:  $\times 200$ )



Immunohistochemistry of paraffin-embedded Human brain tissue using [TA366516] (CEP89 Antibody) at dilution 1/100, treated with fusion protein. (Original magnification:  $\times 200$ )