

## Product datasheet for **TA366512**

### Tropomodulin 3 (TMOD3) Rabbit Polyclonal Antibody

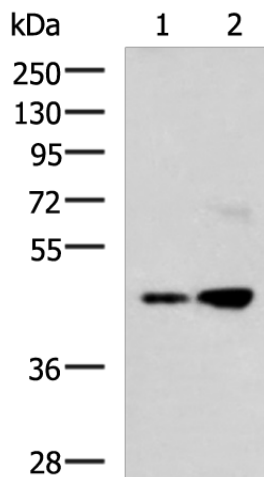
#### Product data:

Product Type:	Primary Antibodies
Applications:	IHC, WB
Recommended Dilution:	WB: 1000-5000 WB positive control: MCF7 and 293T cell lysates IHC: 50-200 Positive control: Human colorectal cancer Predicted cell location: Cytoplasm
Reactivity:	Human, Mouse
Host:	Rabbit
Isotype:	IgG
Clonality:	Polyclonal
Immunogen:	Fusion protein of human TMOD3
Formulation:	pH7.4 PBS, 0.05% NaN <sub>3</sub> , 40% Glycerol
Concentration:	lot specific
Purification:	Antigen affinity purification
Conjugation:	Unconjugated
Storage:	Store at -20°C.
Stability:	1 year
Predicted Protein Size:	40 kDa
Gene Name:	tropomodulin 3
Database Link:	<a href="#">Entrez Gene 29766 Human Q9NYL9</a>
Background:	Blocks the elongation and depolymerization of the actin filaments at the pointed end. The Tmod/TM complex contributes to the formation of the short actin protofilament, which in turn defines the geometry of the membrane skeleton (By similarity).
Synonyms:	U-Tmod; UTMOD

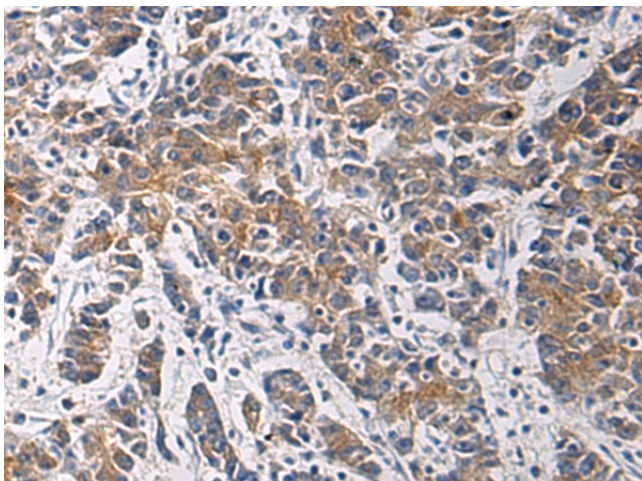


[View online »](#)

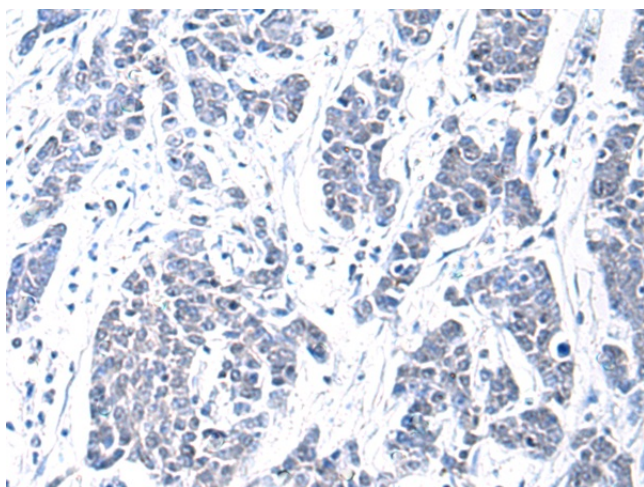
## Product images:



Gel: 8%SDS-PAGE  
Lysate: 40  $\mu$ g  
Lane 1-2: MCF7 and 293T cell lysates  
Primary antibody: TA366512 (TMOD3 Antibody)  
at dilution 1/1300  
Secondary antibody: Goat anti rabbit IgG at  
1/5000 dilution  
Exposure time: 2 minutes



Immunohistochemistry of paraffin-embedded  
Human colorectal cancer tissue using TA366512  
(TMOD3 Antibody) at dilution 1/60 (Original  
magnification:  $\times$ 200)



Immunohistochemistry of paraffin-embedded Human colorectal cancer tissue using TA366512 (TMOD3 Antibody) at dilution 1/60, treated with fusion protein. (Original magnification: ×200)