

Product datasheet for **TA366511S**

THOC3 Rabbit Polyclonal Antibody

Product data:

| | |
|-------------------------|--|
| Product Type: | Primary Antibodies |
| Applications: | IHC, WB |
| Recommended Dilution: | WB: 1000-5000 WB positive control: PC3, RAW264.7, Hela and Jurkat cell lysates IHC: 50-200 Positive control: Human esophagus cancer Predicted cell location: Cytoplasm and Nucleus |
| Reactivity: | Human, Mouse |
| Host: | Rabbit |
| Isotype: | IgG |
| Clonality: | Polyclonal |
| Immunogen: | Fusion protein of human THOC3 |
| Formulation: | pH7.4 PBS, 0.05% NaN ₃ , 40% Glycerol |
| Purification: | Antigen affinity purification |
| Conjugation: | Unconjugated |
| Storage: | Store at -20°C. |
| Stability: | 1 year |
| Predicted Protein Size: | 39 kDa |
| Gene Name: | THO complex 3 |
| Database Link: | Entrez Gene 84321 Human Q96J01 |

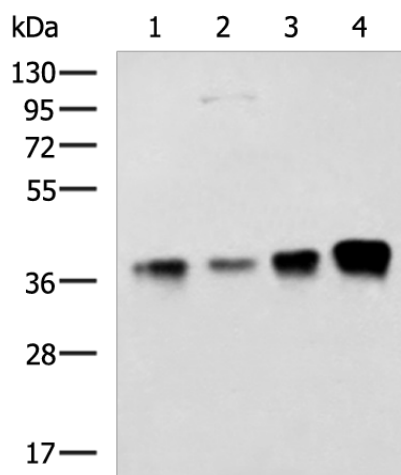
Background: This gene encodes a component of the nuclear THO transcription elongation complex, which is part of the larger transcription export (TREX) complex that couples messenger RNA processing and export. In humans, the transcription export complex is recruited to the 5'-end of messenger RNAs in a splicing- and cap-dependent manner. Studies of a related complex in mouse suggest that the metazoan transcription export complex is involved in cell differentiation and development. A pseudogene of this gene has been defined on chromosome 5.



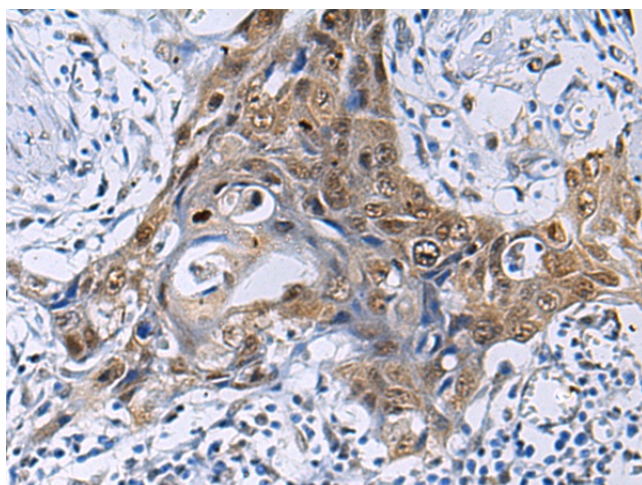
[View online »](#)

Synonyms: htREX45; MGC5469; TEX1; Tho3

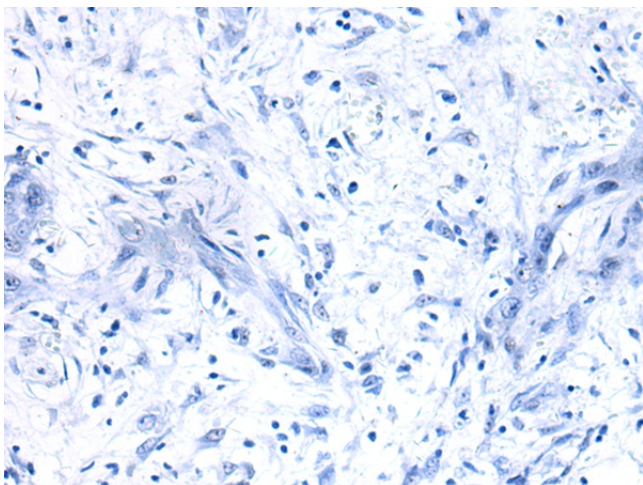
Product images:



Gel: 8%SDS-PAGE
 Lysate: 40 µg
 Lane 1-4: PC3
 RAW264.7
 HeLa and Jurkat cell lysates
 Primary antibody: [TA366511] (THOC3 Antibody) at dilution 1/1300
 Secondary antibody: Goat anti rabbit IgG at 1/5000 dilution
 Exposure time: 2 minutes



Immunohistochemistry of paraffin-embedded Human esophagus cancer tissue using [TA366511] (THOC3 Antibody) at dilution 1/50 (Original magnification: x200)



Immunohistochemistry of paraffin-embedded Human esophagus cancer tissue using [TA366511] (THOC3 Antibody) at dilution 1/50, treated with fusion protein. (Original magnification: $\times 200$)