

Product datasheet for **TA366511**

THOC3 Rabbit Polyclonal Antibody

Product data:

Product Type:	Primary Antibodies
Applications:	IHC, WB
Recommended Dilution:	WB: 1000-5000 WB positive control: PC3, RAW264.7, Hela and Jurkat cell lysates IHC: 50-200 Positive control: Human esophagus cancer Predicted cell location: Cytoplasm and Nucleus
Reactivity:	Human, Mouse
Host:	Rabbit
Isotype:	IgG
Clonality:	Polyclonal
Immunogen:	Fusion protein of human THOC3
Formulation:	pH7.4 PBS, 0.05% NaN ₃ , 40% Glycerol
Concentration:	lot specific
Purification:	Antigen affinity purification
Conjugation:	Unconjugated
Storage:	Store at -20°C.
Stability:	1 year
Predicted Protein Size:	39 kDa
Gene Name:	THO complex 3
Database Link:	Entrez Gene 84321 Human Q96J01



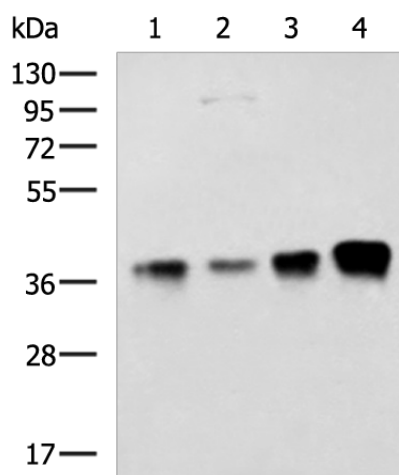
[View online »](#)

Background:

This gene encodes a component of the nuclear THO transcription elongation complex, which is part of the larger transcription export (TREX) complex that couples messenger RNA processing and export. In humans, the transcription export complex is recruited to the 5'-end of messenger RNAs in a splicing- and cap-dependent manner. Studies of a related complex in mouse suggest that the metazoan transcription export complex is involved in cell differentiation and development. A pseudogene of this gene has been defined on chromosome 5.

Synonyms:

hTREX45; MGC5469; TEX1; Tho3

Product images:

Gel: 8%SDS-PAGE

Lysate: 40 µg

Lane 1-4: PC3

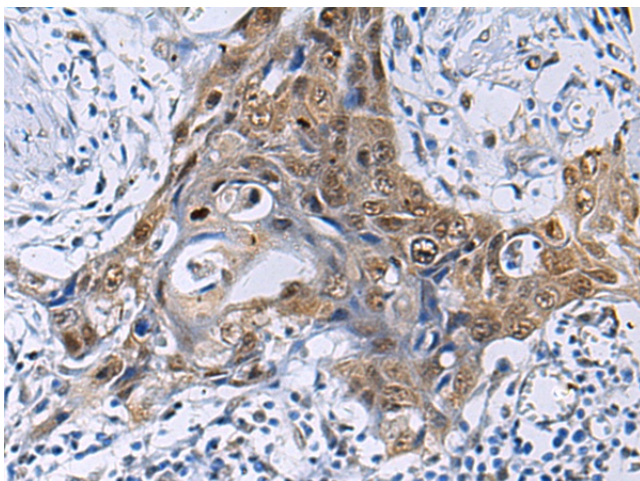
RAW264.7

Hela and Jurkat cell lysates

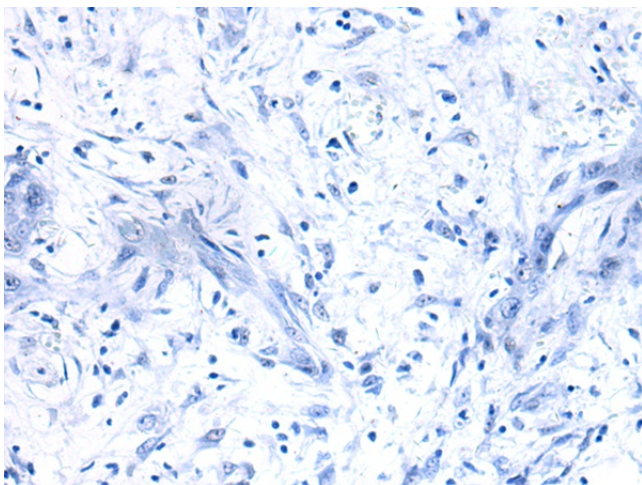
Primary antibody: TA366511 (THOC3 Antibody) at dilution 1/1300

Secondary antibody: Goat anti rabbit IgG at 1/5000 dilution

Exposure time: 2 minutes



Immunohistochemistry of paraffin-embedded Human esophagus cancer tissue using TA366511 (THOC3 Antibody) at dilution 1/50 (Original magnification: ×200)



Immunohistochemistry of paraffin-embedded Human esophagus cancer tissue using TA366511 (THOC3 Antibody) at dilution 1/50, treated with fusion protein. (Original magnification: ×200)