

Product datasheet for **TA366510**

SUV39H2 Rabbit Polyclonal Antibody

Product data:

Product Type:	Primary Antibodies
Applications:	IHC, WB
Recommended Dilution:	WB: 500-2000 WB positive control: 293T and K562 cell lysates IHC: 50-200 Positive control: Human prostate cancer Predicted cell location: Nucleus
Reactivity:	Human, Mouse
Host:	Rabbit
Isotype:	IgG
Clonality:	Polyclonal
Immunogen:	Fusion protein of human SUV39H2
Formulation:	pH7.4 PBS, 0.05% NaN ₃ , 40% Glycerol
Concentration:	lot specific
Purification:	Antigen affinity purification
Conjugation:	Unconjugated
Storage:	Store at -20°C.
Stability:	1 year
Predicted Protein Size:	47 kDa
Gene Name:	suppressor of variegation 3-9 homolog 2
Database Link:	Entrez Gene 79723 Human Q9H5I1



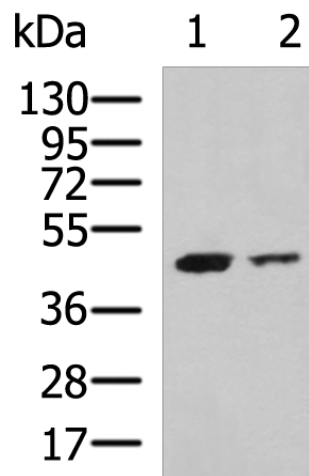
[View online »](#)

Background:

Histone methyltransferase that specifically trimethylates 'Lys-9' of histone H3 using monomethylated H3 'Lys-9' as substrate. H3 'Lys-9' trimethylation represents a specific tag for epigenetic transcriptional repression by recruiting HP1 (CBX1, CBX3 and/or CBX5) proteins to methylated histones. Mainly functions in heterochromatin regions, thereby playing a central role in the establishment of constitutive heterochromatin at pericentric and telomere regions. H3 'Lys-9' trimethylation is also required to direct DNA methylation at pericentric repeats. SUV39H1 is targeted to histone H3 via its interaction with RB1 and is involved in many processes, such as cell cycle regulation, transcriptional repression and regulation of telomere length. May participate in regulation of higher-order chromatin organization during spermatogenesis. Recruited by the large PER complex to the E-box elements of the circadian target genes such as PER2 itself or PER1, contributes to the conversion of local chromatin to a heterochromatin-like repressive state through H3 'Lys-9' trimethylation.

Synonyms:

FLJ23414; KMT1B

Product images:

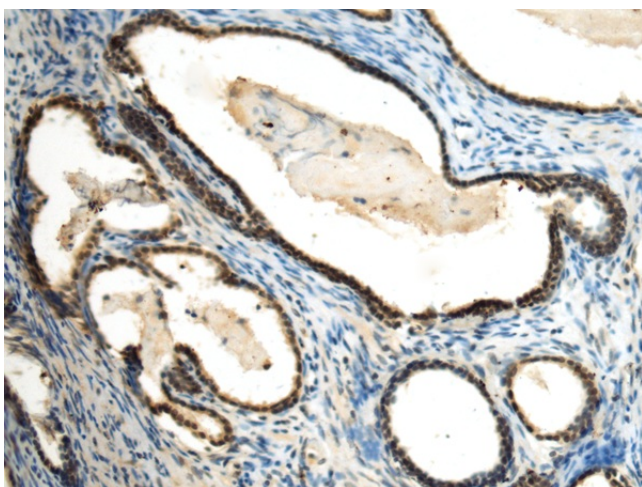
Gel: 8%SDS-PAGE

Lysate: 40 µg

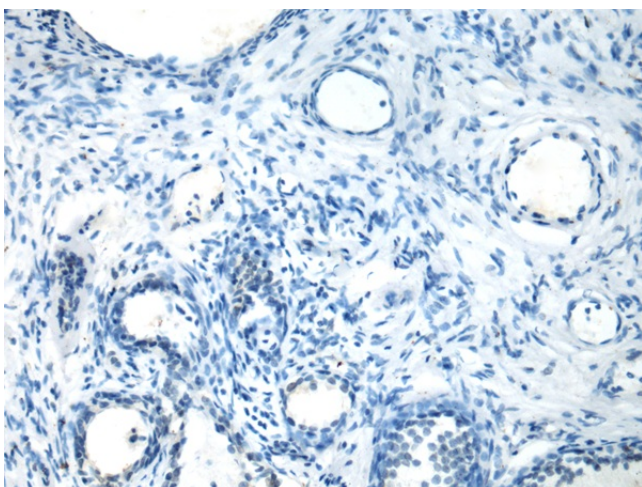
Lane 1-2: 293T and K562 cell lysates

Primary antibody: TA366510 (SUV39H2 Antibody)
at dilution 1/700Secondary antibody: Goat anti rabbit IgG at
1/5000 dilution

Exposure time: 3 minutes



Immunohistochemistry of paraffin-embedded Human prostate cancer tissue using TA366510 (SUV39H2 Antibody) at dilution 1/70 (Original magnification: $\times 200$)



Immunohistochemistry of paraffin-embedded Human prostate cancer tissue using TA366510 (SUV39H2 Antibody) at dilution 1/70, treated with fusion protein. (Original magnification: $\times 200$)