

Product datasheet for **TA366503**

HSDL2 Rabbit Polyclonal Antibody

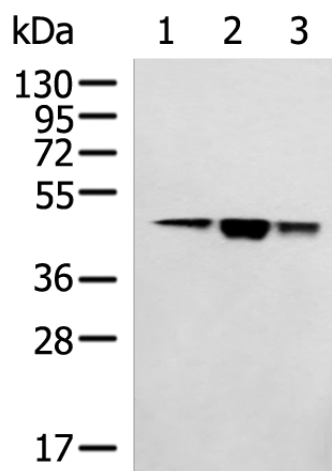
Product data:

Product Type:	Primary Antibodies
Applications:	IHC, WB
Recommended Dilution:	WB: 1000-5000 WB positive control: Hela, 293T, HepG2 cell lysates IHC: 50-200 Positive control: Human colorectal cancer Predicted cell location: Cytoplasm
Reactivity:	Human
Host:	Rabbit
Isotype:	IgG
Clonality:	Polyclonal
Immunogen:	Fusion protein of human HSDL2
Formulation:	pH7.4 PBS, 0.05% NaN ₃ , 40% Glycerol
Concentration:	lot specific
Purification:	Antigen affinity purification
Conjugation:	Unconjugated
Storage:	Store at -20°C.
Stability:	1 year
Predicted Protein Size:	45 kDa
Gene Name:	hydroxysteroid dehydrogenase like 2
Database Link:	Entrez Gene 84263 Human Q6YN16
Background:	Has apparently no steroid dehydrogenase activity.
Synonyms:	C9orf99; FLJ25855; MGC10940; SDR13C1

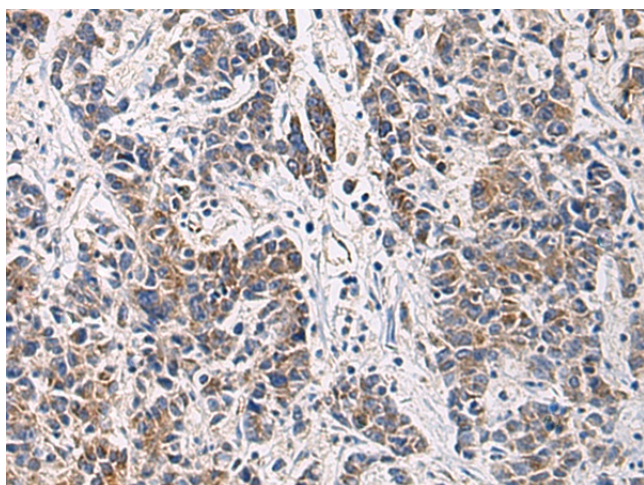


[View online »](#)

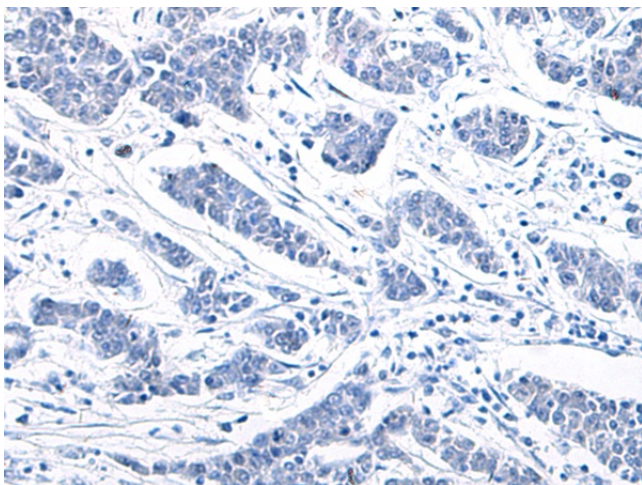
Product images:



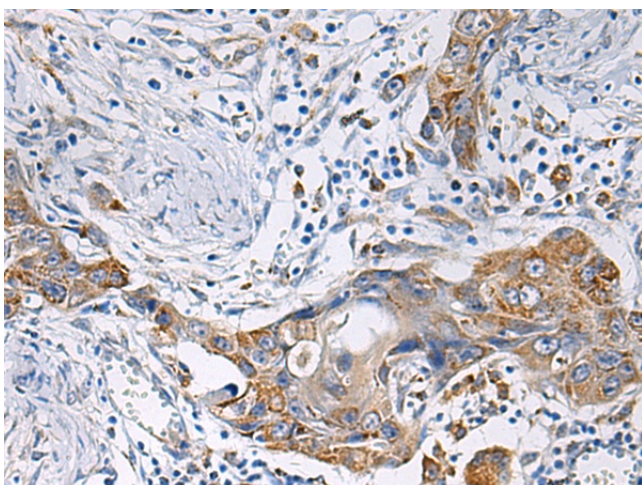
Gel: 8%SDS-PAGE
Lysate: 40 μ g
Lane 1-3: HeLa
293T
HepG2 cell lysates
Primary antibody: TA366503 (HSDL2 Antibody) at
dilution 1/1000
Secondary antibody: Goat anti rabbit IgG at
1/5000 dilution
Exposure time: 15 seconds



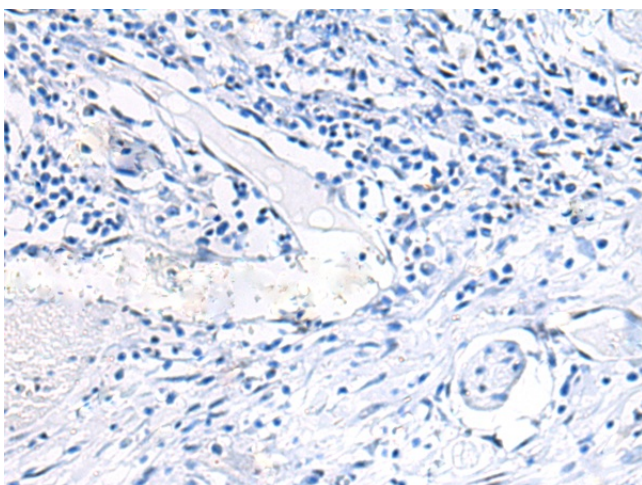
Immunohistochemistry of paraffin-embedded
Human colorectal cancer tissue using TA366503
(HSDL2 Antibody) at dilution 1/80 (Original
magnification: $\times 200$)



Immunohistochemistry of paraffin-embedded Human colorectal cancer tissue using TA366503 (HSDL2 Antibody) at dilution 1/80, treated with fusion protein. (Original magnification: $\times 200$)



Immunohistochemistry of paraffin-embedded Human esophagus cancer tissue using TA366503 (HSDL2 Antibody) at dilution 1/80 (Original magnification: $\times 200$)



Immunohistochemistry of paraffin-embedded Human esophagus cancer tissue using TA366503 (HSDL2 Antibody) at dilution 1/80, treated with fusion protein. (Original magnification: $\times 200$)