

## Product datasheet for **TA366497**

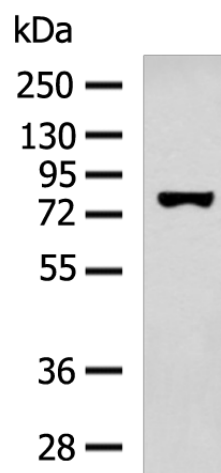
### SSH3 Rabbit Polyclonal Antibody

#### Product data:

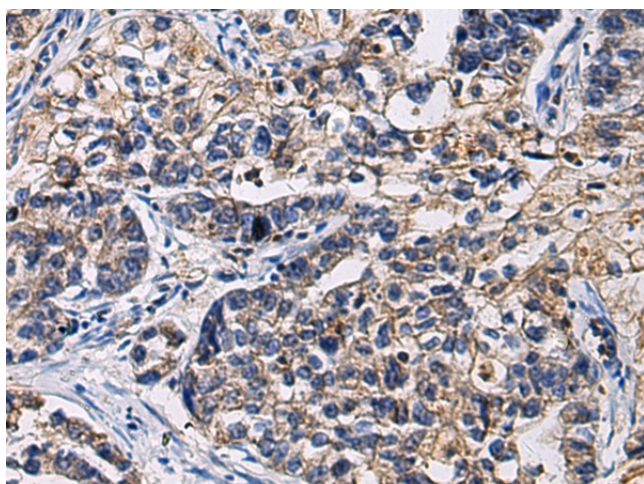
Product Type:	Primary Antibodies
Applications:	IHC, WB
Recommended Dilution:	WB: 500-2000 WB positive control: 293T cell lysate IHC: 50-200 Positive control: Human gastric cancer Predicted cell location: Cytoplasm
Reactivity:	Human
Host:	Rabbit
Isotype:	IgG
Clonality:	Polyclonal
Immunogen:	Fusion protein of human SSH3
Formulation:	pH7.4 PBS, 0.05% NaN <sub>3</sub> , 40% Glycerol
Concentration:	lot specific
Purification:	Antigen affinity purification
Conjugation:	Unconjugated
Storage:	Store at -20°C.
Stability:	1 year
Predicted Protein Size:	73 kDa
Gene Name:	slingshot protein phosphatase 3
Database Link:	<a href="#">Entrez Gene 54961 Human Q8TE77</a>
Background:	The ADF (actin-depolymerizing factor)/cofilin family (see MIM 601442) is composed of stimulus-responsive mediators of actin dynamics. ADF/cofilin proteins are inactivated by kinases such as LIM domain kinase-1 (LIMK1; MIM 601329). The SSH family appears to play a role in actin dynamics by reactivating ADF/cofilin proteins in vivo (Niwa et al., 2002 [PubMed 11832213]).
Synonyms:	FLJ10928; FLJ20515; FLJ42240; hSSH-3L; SSH-3L; SSH3L



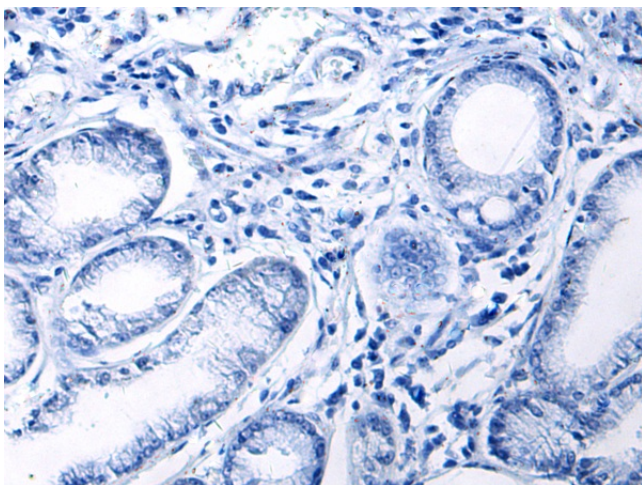
[View online »](#)

**Product images:**

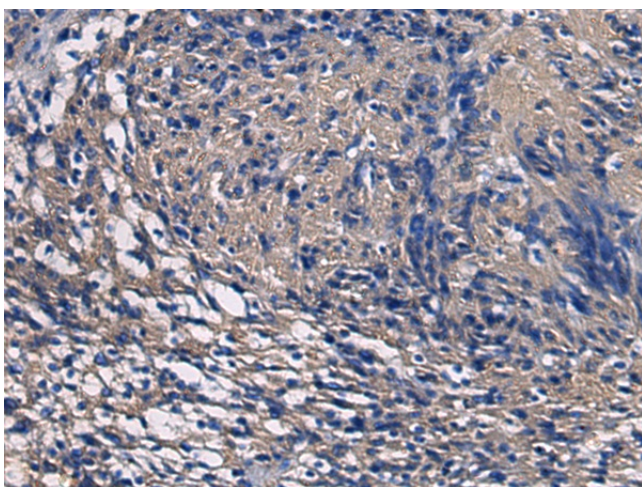
Gel: 8%SDS-PAGE  
Lysate: 40 µg  
Lane: 293T cell lysate  
Primary antibody: TA366497 (SSH3 Antibody) at dilution 1/800  
Secondary antibody: Goat anti rabbit IgG at 1/5000 dilution  
Exposure time: 5 minutes



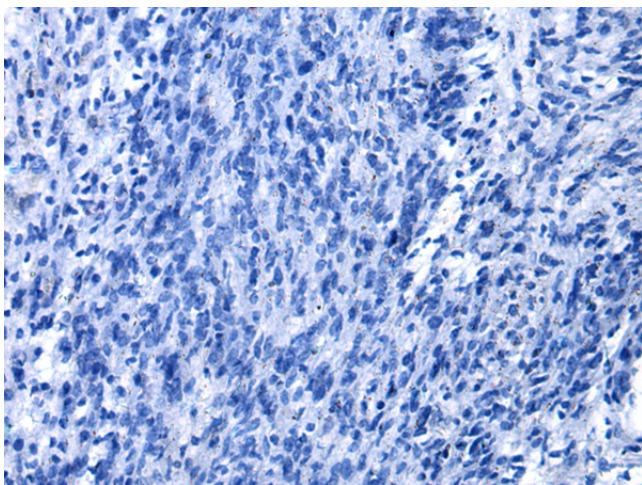
Immunohistochemistry of paraffin-embedded Human gastric cancer tissue using TA366497 (SSH3 Antibody) at dilution 1/55 (Original magnification: x200)



Immunohistochemistry of paraffin-embedded Human gastric cancer tissue using TA366497 (SSH3 Antibody) at dilution 1/55, treated with fusion protein. (Original magnification:  $\times 200$ )



Immunohistochemistry of paraffin-embedded Human brain tissue using TA366497 (SSH3 Antibody) at dilution 1/55 (Original magnification:  $\times 200$ )



Immunohistochemistry of paraffin-embedded Human brain tissue using TA366497 (SSH3 Antibody) at dilution 1/55, treated with fusion protein. (Original magnification:  $\times 200$ )