

## Product datasheet for **TA366493S**

### PPP2R4 (PTPA) Rabbit Polyclonal Antibody

#### Product data:

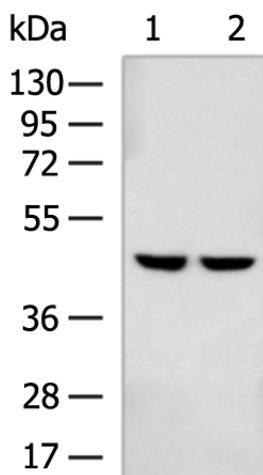
|                         |   |
|-------------------------|---|
| Product Type:           | Primary Antibodies  |
| Applications:           | IHC, WB   |
| Recommended Dilution:   | WB: 500-2000<br>WB positive control: PC-3 and MCF-7 cell lysates<br>IHC: 50-200<br>Positive control: Human ovarian cancer<br>Predicted cell location: Cytoplasm and Nucleus |
| Reactivity:             | Human, Mouse  |
| Host:                   | Rabbit  |
| Isotype:                | IgG   |
| Clonality:              | Polyclonal  |
| Immunogen:              | Fusion protein of human PTPA  |
| Formulation:            | pH7.4 PBS, 0.05% NaN <sub>3</sub> , 40% Glycerol  |
| Purification:           | Antigen affinity purification   |
| Conjugation:            | Unconjugated  |
| Storage:                | Store at -20°C.   |
| Stability:              | 1 year  |
| Predicted Protein Size: | 41 kDa  |
| Gene Name:              | protein phosphatase 2 phosphatase activator   |
| Database Link:          | <a href="#">Entrez Gene 5524 Human Q15257</a>   |



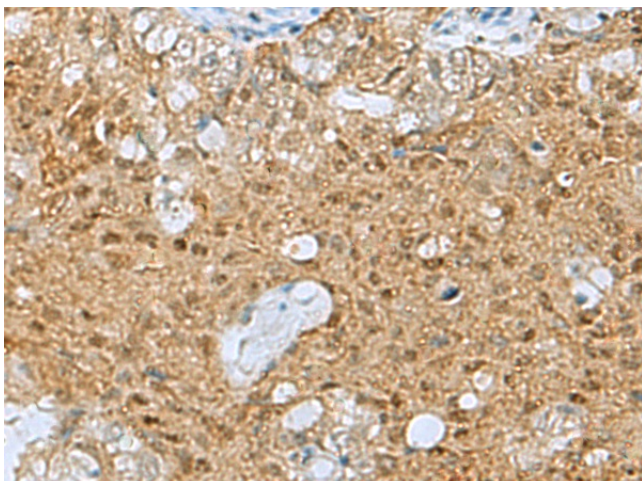
[View online »](#)

**Background:**

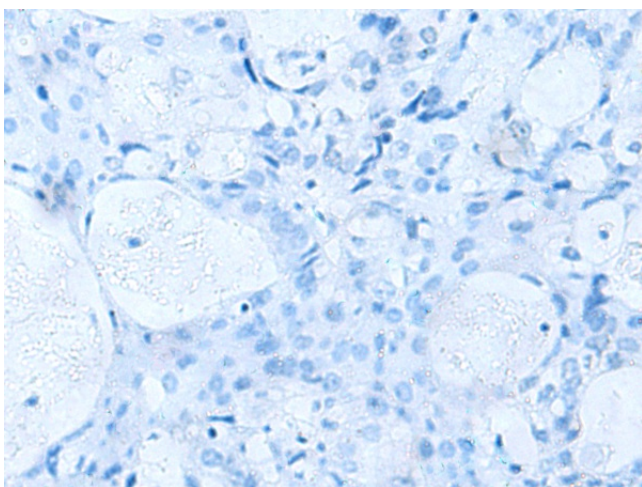
Protein phosphatase 2A is one of the four major Ser/Thr phosphatases and is implicated in the negative control of cell growth and division. Protein phosphatase 2A holoenzymes are heterotrimeric proteins composed of a structural subunit A, a catalytic subunit C, and a regulatory subunit B. The regulatory subunit is encoded by a diverse set of genes that have been grouped into the B/PR55, B'/PR61, and B''/PR72 families. These different regulatory subunits confer distinct enzymatic specificities and intracellular localizations to the holoenzyme. The product of this gene belongs to the B' family. This gene encodes a specific phosphotyrosyl phosphatase activator of the dimeric form of protein phosphatase 2A. Alternative splicing results in multiple transcript variants encoding different isoforms.

**Product images:**

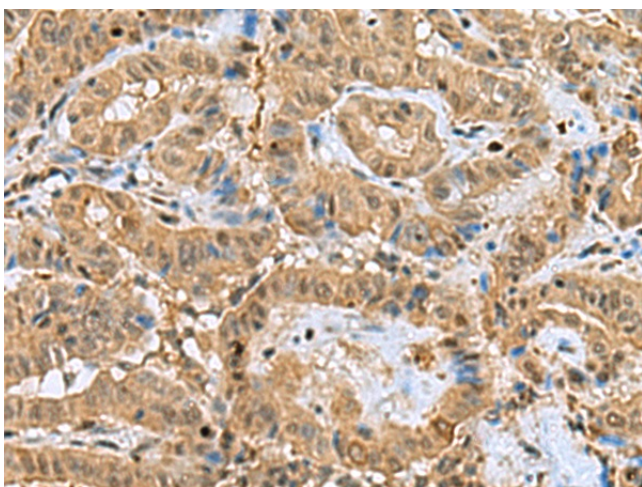
Gel: 8%SDS-PAGE  
Lysate: 40 µg  
Lane 1-2: PC-3 and MCF-7 cell lysates  
Primary antibody: [TA366493] (PTPA Antibody) at dilution 1/800  
Secondary antibody: Goat anti rabbit IgG at 1/5000 dilution  
Exposure time: 5 seconds



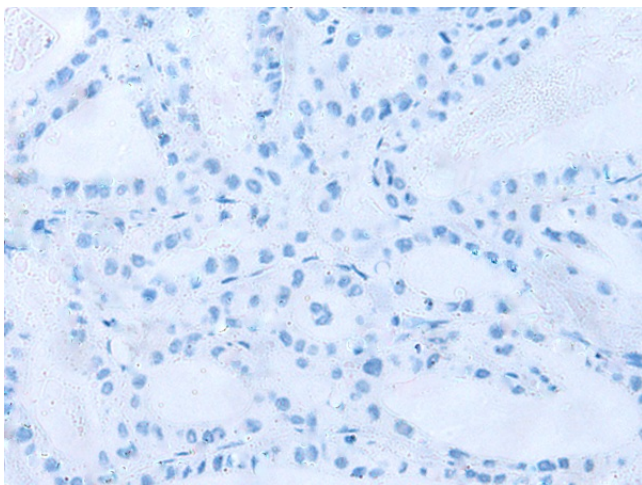
Immunohistochemistry of paraffin-embedded Human ovarian cancer tissue using [TA366493] (PTPA Antibody) at dilution 1/60 (Original magnification: ×200)



Immunohistochemistry of paraffin-embedded Human ovarian cancer tissue using [TA366493] (PTPA Antibody) at dilution 1/60, treated with fusion protein. (Original magnification: ×200)



Immunohistochemistry of paraffin-embedded Human thyroid cancer tissue using [TA366493] (PTPA Antibody) at dilution 1/60 (Original magnification: ×200)



Immunohistochemistry of paraffin-embedded Human thyroid cancer tissue using [TA366493] (PTPA Antibody) at dilution 1/60, treated with fusion protein. (Original magnification: ×200)