

Product datasheet for **TA366488**

EPCAM Rabbit Polyclonal Antibody

Product data:

Product Type:	Primary Antibodies
Applications:	IHC, WB
Recommended Dilution:	WB: 500-2000 WB positive control: HT-29 cell lysate IHC: 50-200 Positive control: Human thyroid cancer Predicted cell location: Cell membrane
Reactivity:	Human, Mouse, Rat
Host:	Rabbit
Isotype:	IgG
Clonality:	Polyclonal
Immunogen:	Fusion protein of human EPCAM
Formulation:	pH7.4 PBS, 0.05% NaN ₃ , 40% Glycerol
Concentration:	lot specific
Purification:	Antigen affinity purification
Conjugation:	Unconjugated
Storage:	Store at -20°C.
Stability:	1 year
Predicted Protein Size:	35 kDa
Gene Name:	epithelial cell adhesion molecule
Database Link:	Entrez Gene 4072 Human P16422

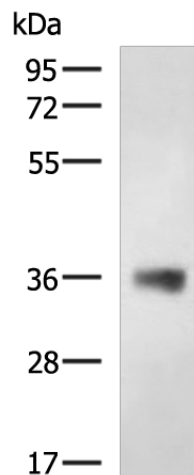
Background: This gene encodes a carcinoma-associated antigen and is a member of a family that includes at least two type I membrane proteins. This antigen is expressed on most normal epithelial cells and gastrointestinal carcinomas and functions as a homotypic calcium-independent cell adhesion molecule. The antigen is being used as a target for immunotherapy treatment of human carcinomas. Mutations in this gene result in congenital tufting enteropathy.



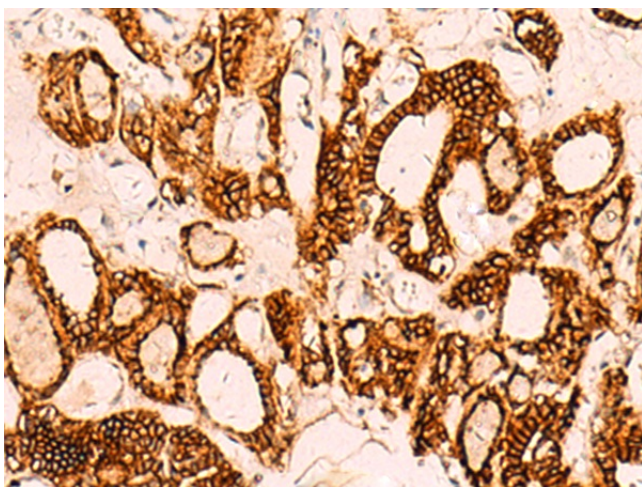
[View online »](#)

Synonyms:

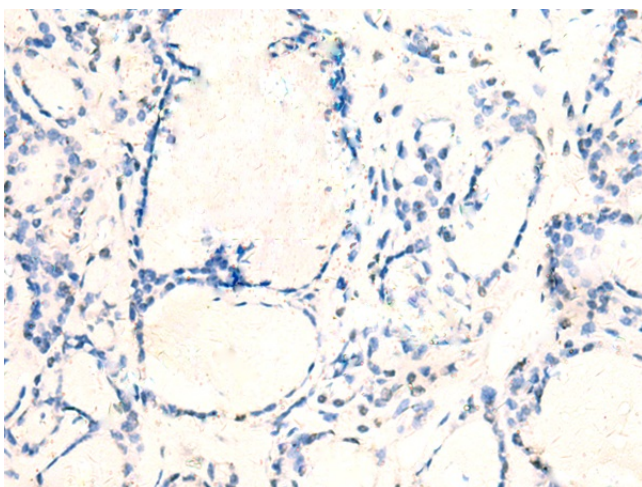
17-1A; 323/A3; CD326; CO-17A; CO17-1A; EGP; EGP-2; EGP34; EGP40; EGP314; Ep-CAM; ESA; GA733-2; HEA125; hEGP-2; hEGP314; KS1/4; KSA; Ly74; M1S2; M4S1; MH99; MIC18; MK-1; MOC31; TACST-1; TACSTD1; TROP1

Product images:

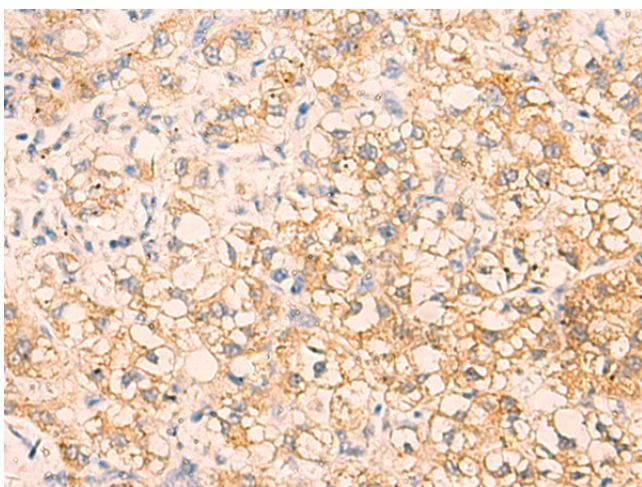
Gel: 8%SDS-PAGE
Lysate: 40 µg
Lane: HT-29 cell lysate
Primary antibody: TA366488 (EPCAM Antibody) at dilution 1/650
Secondary antibody: Goat anti rabbit IgG at 1/5000 dilution
Exposure time: 30 seconds



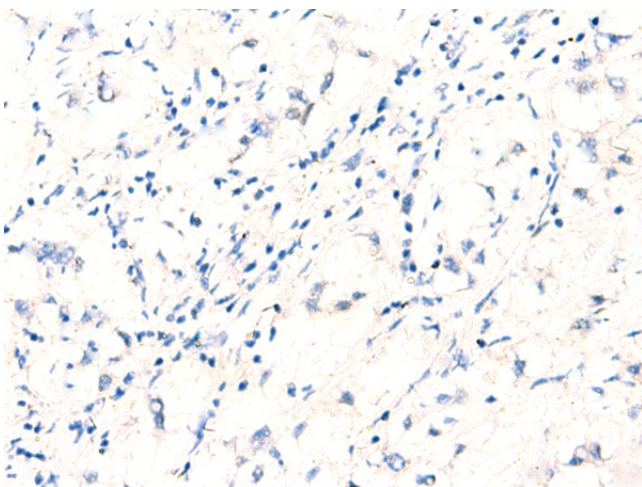
Immunohistochemistry of paraffin-embedded Human thyroid cancer tissue using TA366488 (EPCAM Antibody) at dilution 1/40 (Original magnification: ×200)



Immunohistochemistry of paraffin-embedded Human thyroid cancer tissue using TA366488 (EPCAM Antibody) at dilution 1/40, treated with fusion protein. (Original magnification: $\times 200$)



Immunohistochemistry of paraffin-embedded Human liver cancer tissue using TA366488 (EPCAM Antibody) at dilution 1/40 (Original magnification: $\times 200$)



Immunohistochemistry of paraffin-embedded Human liver cancer tissue using TA366488 (EPCAM Antibody) at dilution 1/40, treated with fusion protein. (Original magnification: $\times 200$)