

## Product datasheet for **TA366482S**

### EMAP II (AIMP1) Rabbit Polyclonal Antibody

#### Product data:

|                         |   |
|-------------------------|---|
| Product Type:           | Primary Antibodies  |
| Applications:           | IHC, WB   |
| Recommended Dilution:   | WB: 500-2000<br>WB positive control: HepG2 and Hela cell lysates<br>IHC: 50-200<br>Positive control: Human liver cancer<br>Predicted cell location: Cytoplasm |
| Reactivity:             | Human, Mouse  |
| Host:                   | Rabbit  |
| Isotype:                | IgG   |
| Clonality:              | Polyclonal  |
| Immunogen:              | Fusion protein of human AIMP1   |
| Formulation:            | pH7.4 PBS, 0.05% NaN <sub>3</sub> , 40% Glycerol  |
| Purification:           | Antigen affinity purification   |
| Conjugation:            | Unconjugated  |
| Storage:                | Store at -20°C.   |
| Stability:              | 1 year  |
| Predicted Protein Size: | 34 kDa  |
| Gene Name:              | aminoacyl tRNA synthetase complex interacting multifunctional protein 1   |
| Database Link:          | <a href="#">Entrez Gene 9255 Human Q12904</a>   |



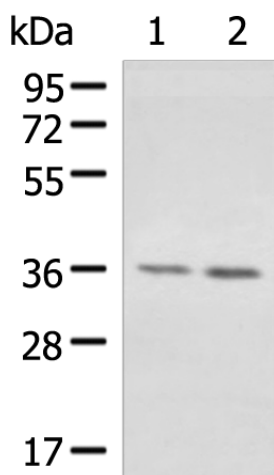
[View online »](#)

**Background:**

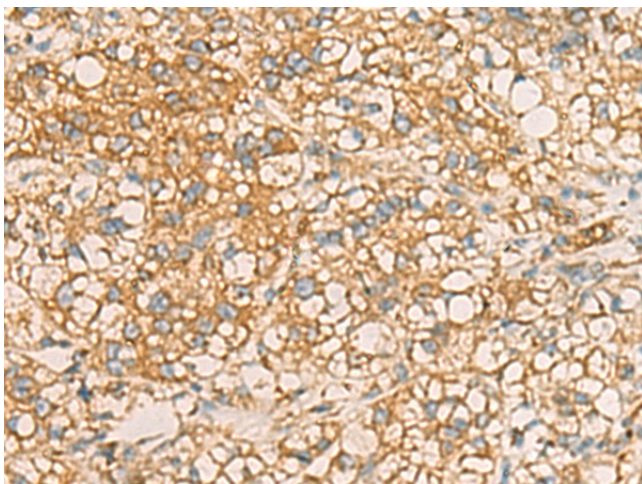
The protein encoded by this gene is a cytokine that is specifically induced by apoptosis, and it is involved in the control of angiogenesis, inflammation, and wound healing. The release of this cytokine renders the tumor-associated vasculature sensitive to tumor necrosis factor. The precursor protein is identical to the p43 subunit, which is associated with the multi-tRNA synthetase complex, and it modulates aminoacylation activity of tRNA synthetase in normal cells. This protein is also involved in the stimulation of inflammatory responses after proteolytic cleavage in tumor cells. Multiple transcript variants encoding different isoforms have been found for this gene. A pseudogene has been identified on chromosome 20.

**Synonyms:**

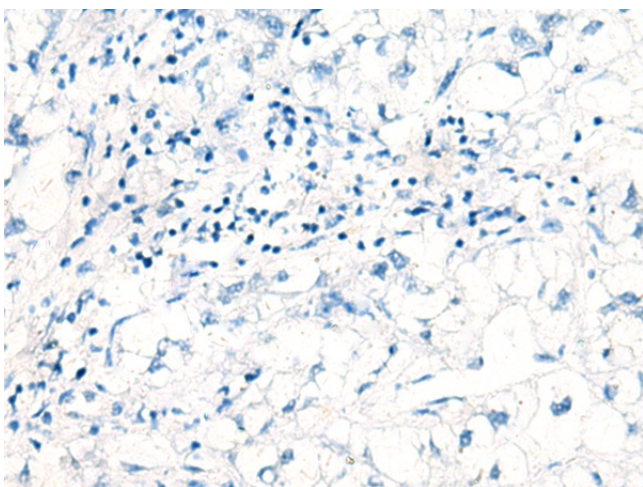
EMAP-2; EMAP2; EMAPII; p43; SCYE1

**Product images:**

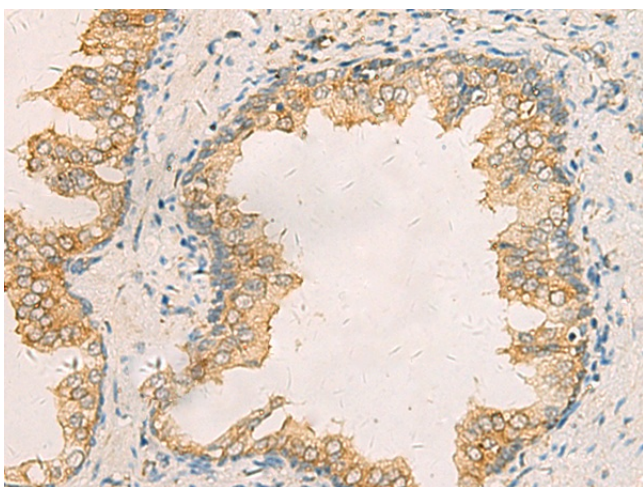
Gel: 8%SDS-PAGE  
Lysate: 40 µg  
Lane 1-2: HepG2 and HeLa cell lysates  
Primary antibody: [TA366482] (AIMP1 Antibody) at dilution 1/1000  
Secondary antibody: Goat anti rabbit IgG at 1/5000 dilution  
Exposure time: 30 seconds



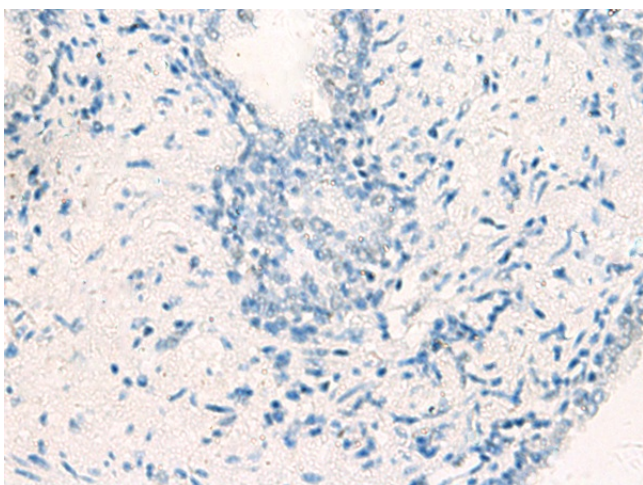
Immunohistochemistry of paraffin-embedded Human liver cancer tissue using [TA366482] (AIMP1 Antibody) at dilution 1/40 (Original magnification: ×200)



Immunohistochemistry of paraffin-embedded Human liver cancer tissue using [TA366482] (AIMP1 Antibody) at dilution 1/40, treated with fusion protein. (Original magnification: ×200)



Immunohistochemistry of paraffin-embedded Human prostate cancer tissue using [TA366482] (AIMP1 Antibody) at dilution 1/40 (Original magnification: ×200)



Immunohistochemistry of paraffin-embedded Human prostate cancer tissue using [TA366482] (AIMP1 Antibody) at dilution 1/40, treated with fusion protein. (Original magnification: ×200)