

Product datasheet for **TA366482**

EMAP II (AIMP1) Rabbit Polyclonal Antibody

Product data:

Product Type:	Primary Antibodies
Applications:	IHC, WB
Recommended Dilution:	WB: 500-2000 WB positive control: HepG2 and Hela cell lysates IHC: 50-200 Positive control: Human liver cancer Predicted cell location: Cytoplasm
Reactivity:	Human, Mouse
Host:	Rabbit
Isotype:	IgG
Clonality:	Polyclonal
Immunogen:	Fusion protein of human AIMP1
Formulation:	pH7.4 PBS, 0.05% NaN ₃ , 40% Glycerol
Concentration:	lot specific
Purification:	Antigen affinity purification
Conjugation:	Unconjugated
Storage:	Store at -20°C.
Stability:	1 year
Predicted Protein Size:	34 kDa
Gene Name:	aminoacyl tRNA synthetase complex interacting multifunctional protein 1
Database Link:	Entrez Gene 9255 Human Q12904



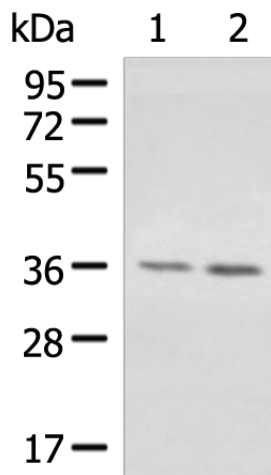
[View online »](#)

Background:

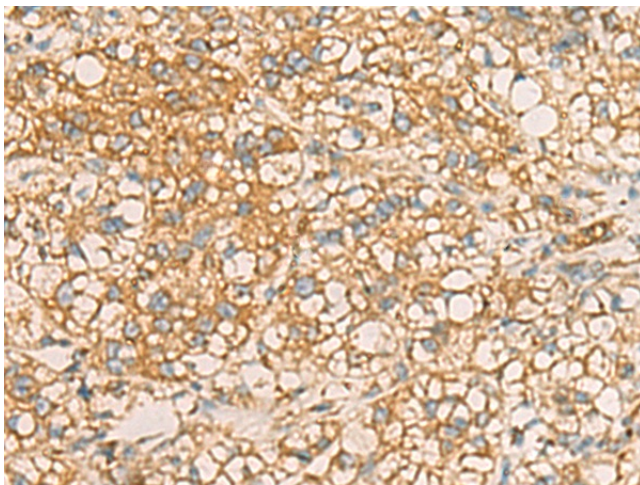
The protein encoded by this gene is a cytokine that is specifically induced by apoptosis, and it is involved in the control of angiogenesis, inflammation, and wound healing. The release of this cytokine renders the tumor-associated vasculature sensitive to tumor necrosis factor. The precursor protein is identical to the p43 subunit, which is associated with the multi-tRNA synthetase complex, and it modulates aminoacylation activity of tRNA synthetase in normal cells. This protein is also involved in the stimulation of inflammatory responses after proteolytic cleavage in tumor cells. Multiple transcript variants encoding different isoforms have been found for this gene. A pseudogene has been identified on chromosome 20.

Synonyms:

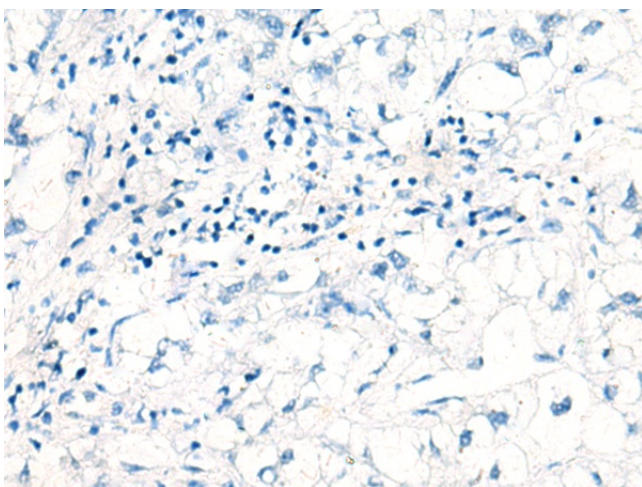
EMAP-2; EMAP2; EMAPII; p43; SCYE1

Product images:


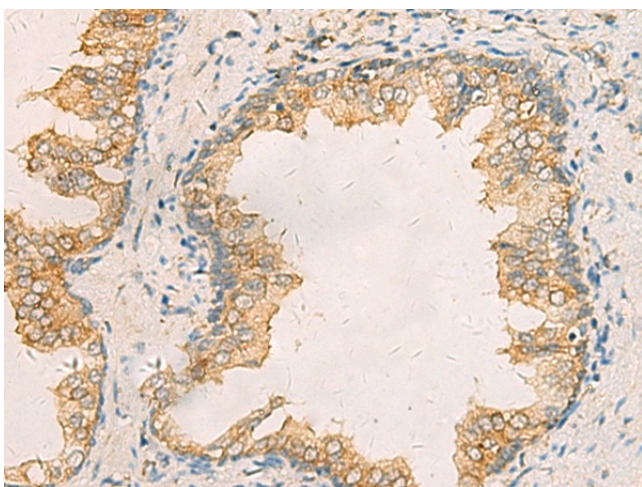
Gel: 8%SDS-PAGE
 Lysate: 40 µg
 Lane 1-2: HepG2 and Hela cell lysates
 Primary antibody: TA366482 (AIMP1 Antibody) at dilution 1/1000
 Secondary antibody: Goat anti rabbit IgG at 1/5000 dilution
 Exposure time: 30 seconds



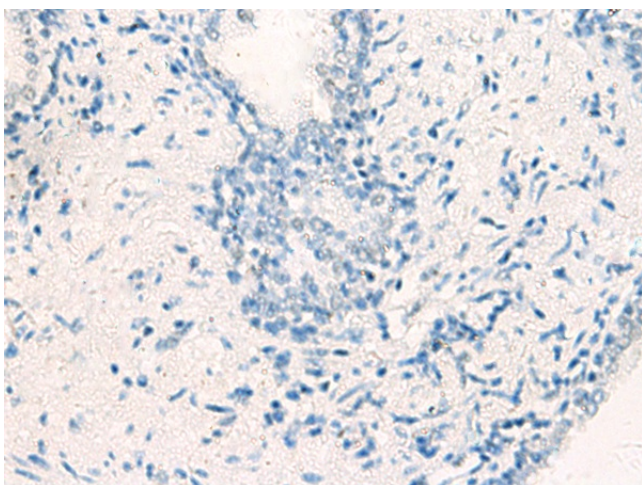
Immunohistochemistry of paraffin-embedded Human liver cancer tissue using TA366482 (AIMP1 Antibody) at dilution 1/40 (Original magnification: ×200)



Immunohistochemistry of paraffin-embedded Human liver cancer tissue using TA366482 (AIMP1 Antibody) at dilution 1/40, treated with fusion protein. (Original magnification: x200)



Immunohistochemistry of paraffin-embedded Human prostate cancer tissue using TA366482 (AIMP1 Antibody) at dilution 1/40 (Original magnification: x200)



Immunohistochemistry of paraffin-embedded Human prostate cancer tissue using TA366482 (AIMP1 Antibody) at dilution 1/40, treated with fusion protein. (Original magnification: x200)