

## Product datasheet for **TA366480**

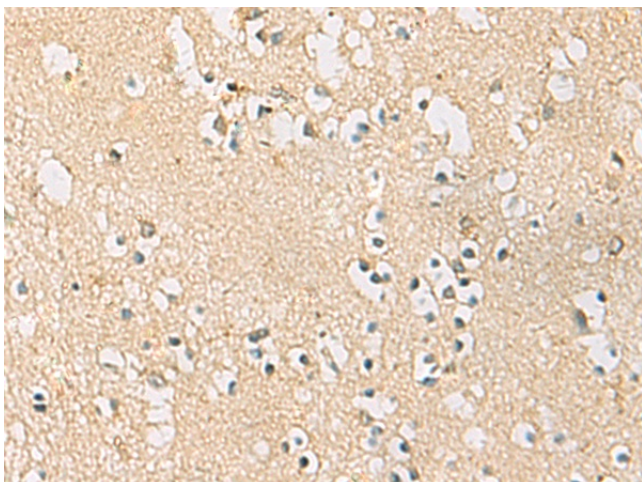
### PDE4DIP Rabbit Polyclonal Antibody

#### Product data:

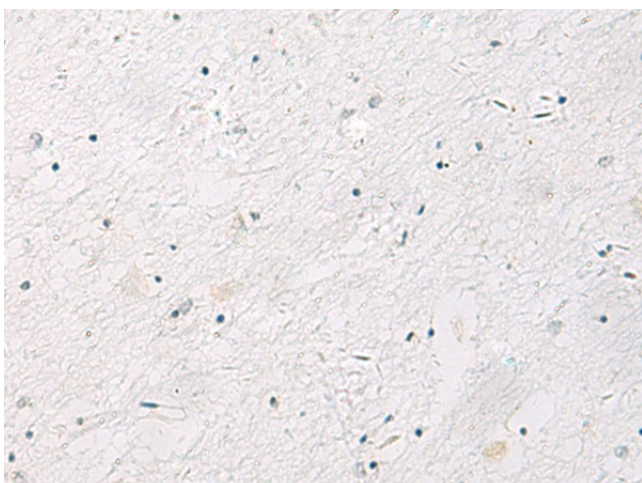
Product Type:	Primary Antibodies
Applications:	IHC
Recommended Dilution:	IHC: 50-100 Positive control: Human brain Predicted cell location: Cytoplasm
Reactivity:	Human, Mouse, Rat
Host:	Rabbit
Isotype:	IgG
Clonality:	Polyclonal
Immunogen:	Fusion protein of human PDE4DIP
Formulation:	pH7.4 PBS, 0.05% NaN <sub>3</sub> , 40% Glycerol
Concentration:	lot specific
Purification:	Antigen affinity purification
Conjugation:	Unconjugated
Storage:	Store at -20°C.
Stability:	1 year
Gene Name:	phosphodiesterase 4D interacting protein
Database Link:	<a href="#">Entrez Gene 9659 Human Q5VU43</a>
Background:	The protein encoded by this gene serves to anchor phosphodiesterase 4D to the Golgi/centrosome region of the cell. Defects in this gene may be a cause of myeloproliferative disorder (MBD) associated with eosinophilia. Several transcript variants encoding different isoforms have been found for this gene.
Synonyms:	CMYA2; DKFZp781J054; KIAA0454; KIAA0477; MGC75440; MMGL; myomegalin



[View online »](#)

**Product images:**

Immunohistochemistry of paraffin-embedded Human brain tissue using TA366480 (PDE4DIP Antibody) at dilution 1/45 (Original magnification: ×200)



Immunohistochemistry of paraffin-embedded Human brain tissue using TA366480 (PDE4DIP Antibody) at dilution 1/45, treated with fusion protein. (Original magnification: ×200)