

## Product datasheet for **TA366479**

### SAP30BP Rabbit Polyclonal Antibody

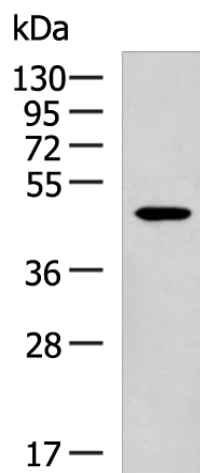
#### Product data:

Product Type:	Primary Antibodies
Applications:	IHC, WB
Recommended Dilution:	WB: 500-2000 WB positive control: HUVEC cell lysate IHC: 50-100 Positive control: Human thyroid cancer Predicted cell location: Nucleus
Reactivity:	Human, Mouse
Host:	Rabbit
Isotype:	IgG
Clonality:	Polyclonal
Immunogen:	Fusion protein of human SAP30BP
Formulation:	pH7.4 PBS, 0.05% NaN <sub>3</sub> , 40% Glycerol
Concentration:	lot specific
Purification:	Antigen affinity purification
Conjugation:	Unconjugated
Storage:	Store at -20°C.
Stability:	1 year
Predicted Protein Size:	34 kDa
Gene Name:	SAP30 binding protein
Database Link:	<a href="#">Entrez Gene 29115 Human Q9UHR5</a>
Background:	Induces cell death. May act as a transcriptional corepressor of a gene related to cell survival. May be involved in the regulation of beta-2-microglobulin genes.
Synonyms:	DKFZp586L2022; HCNGP; HTRG; HTRP

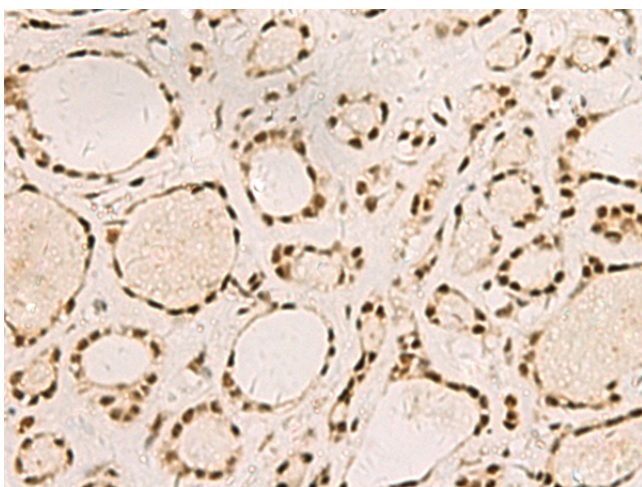


[View online »](#)

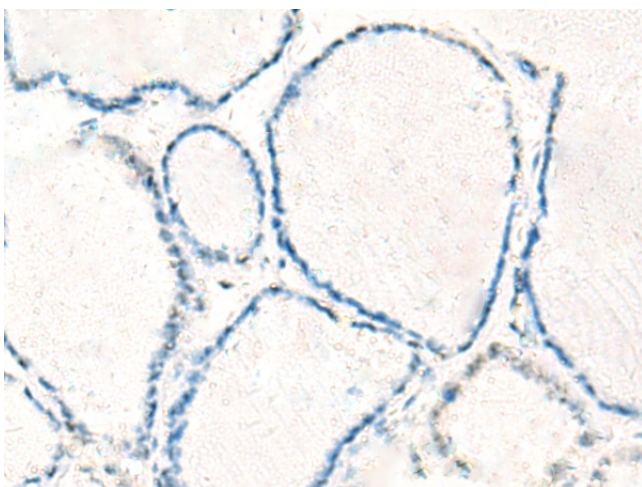
## Product images:



Gel: 8%SDS-PAGE  
Lysate: 40  $\mu$ g  
Lane: HUVEC cell lysate  
Primary antibody: TA366479 (SAP30BP Antibody) at dilution 1/400  
Secondary antibody: Goat anti rabbit IgG at 1/5000 dilution  
Exposure time: 1 minute



Immunohistochemistry of paraffin-embedded Human thyroid cancer tissue using TA366479 (SAP30BP Antibody) at dilution 1/45 (Original magnification:  $\times$ 200)



Immunohistochemistry of paraffin-embedded Human thyroid cancer tissue using TA366479 (SAP30BP Antibody) at dilution 1/45, treated with fusion protein. (Original magnification: ×200)