

Product datasheet for **TA366476S**

PDCL Rabbit Polyclonal Antibody

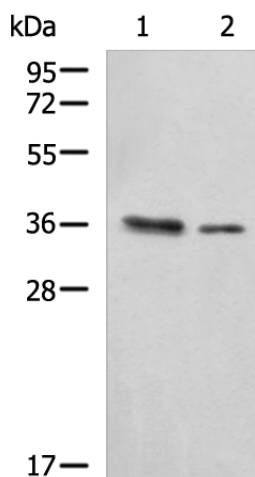
Product data:

Product Type:	Primary Antibodies
Applications:	IHC, WB
Recommended Dilution:	WB: 500-2000 WB positive control: 293T and NIH/3T3 cell lysates IHC: 50-200 Positive control: Human liver cancer Predicted cell location: Cytoplasm
Reactivity:	Human, Mouse, Rat
Host:	Rabbit
Isotype:	IgG
Clonality:	Polyclonal
Immunogen:	Fusion protein of human PDCL
Formulation:	pH7.4 PBS, 0.05% NaN ₃ , 40% Glycerol
Purification:	Antigen affinity purification
Conjugation:	Unconjugated
Storage:	Store at -20°C.
Stability:	1 year
Predicted Protein Size:	34 kDa
Gene Name:	phosducin like
Database Link:	Entrez Gene 5082 Human Q13371
Background:	Phosducin-like protein is a putative modulator of heterotrimeric G proteins. The protein shares extensive amino acid sequence homology with phosducin, a phosphoprotein expressed in retina and pineal gland. Both phosducin-like protein and phosphoducin have been shown to regulate G-protein signaling by binding to the beta-gamma subunits of G proteins.
Synonyms:	DKFZp564M1863; PhLP; phosducin-like

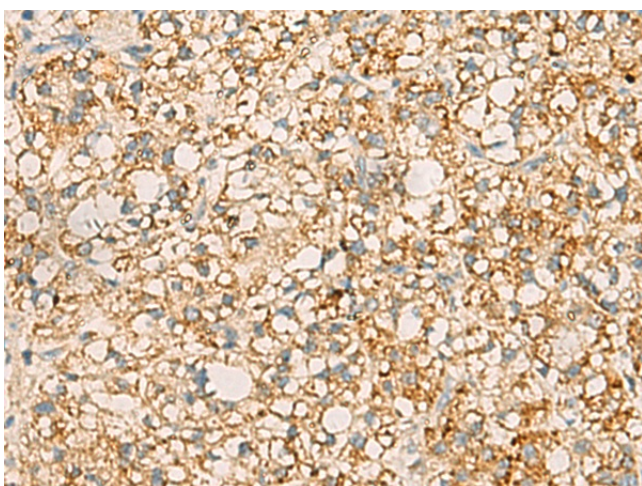


[View online »](#)

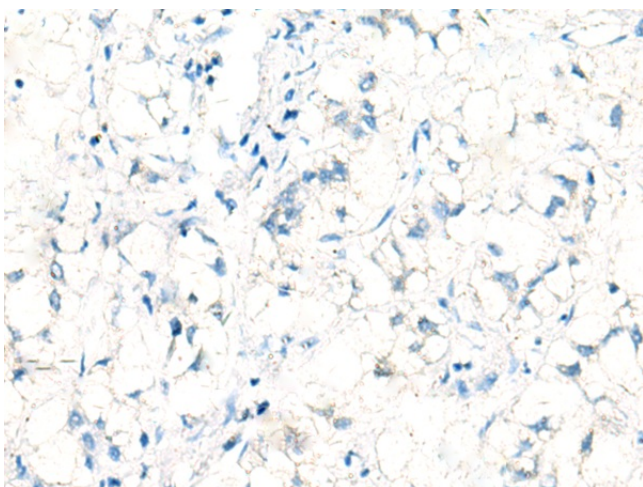
Product images:



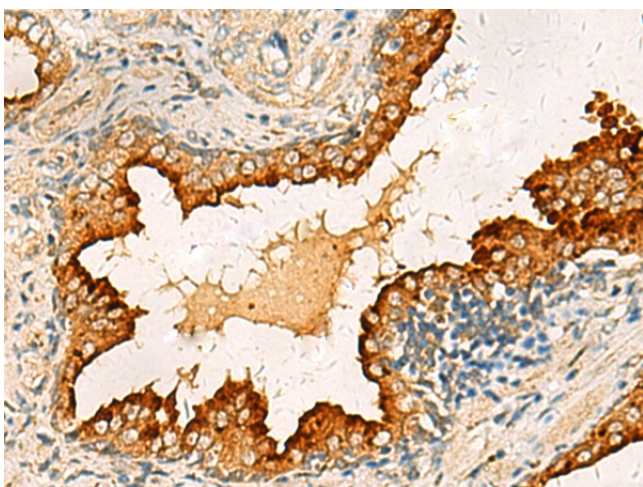
Gel: 12%SDS-PAGE
Lysate: 40 µg
Lane 1-2: 293T and NIH/3T3 cell lysates
Primary antibody: [TA366476] (PDCL Antibody) at dilution 1/1000
Secondary antibody: Goat anti rabbit IgG at 1/5000 dilution
Exposure time: 2 minutes



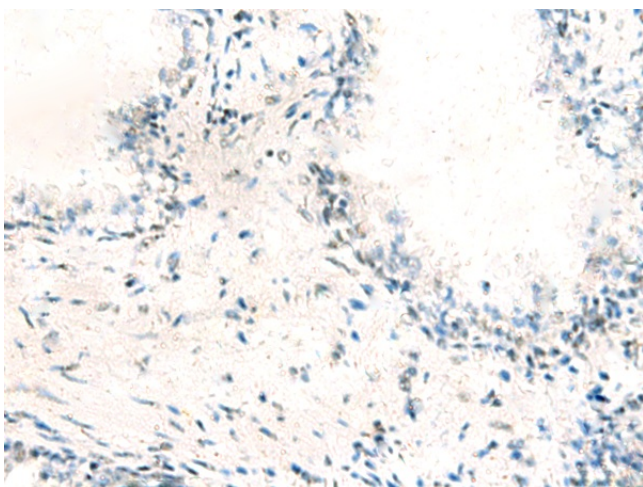
Immunohistochemistry of paraffin-embedded Human liver cancer tissue using [TA366476] (PDCL Antibody) at dilution 1/40 (Original magnification: ×200)



Immunohistochemistry of paraffin-embedded Human liver cancer tissue using [TA366476] (PDCL Antibody) at dilution 1/40, treated with fusion protein. (Original magnification: ×200)



Immunohistochemistry of paraffin-embedded Human prostate cancer tissue using [TA366476] (PDCL Antibody) at dilution 1/40 (Original magnification: ×200)



Immunohistochemistry of paraffin-embedded Human prostate cancer tissue using [TA366476] (PDCL Antibody) at dilution 1/40, treated with fusion protein. (Original magnification: ×200)