

## Product datasheet for **TA366473**

### SGF29 Rabbit Polyclonal Antibody

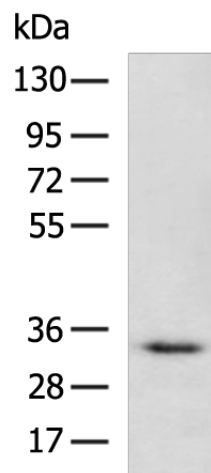
#### Product data:

Product Type:	Primary Antibodies
Applications:	WB
Recommended Dilution:	WB: 500-2000 WB positive control: 293T cell lysate
Reactivity:	Human, Mouse, Rat
Host:	Rabbit
Isotype:	IgG
Clonality:	Polyclonal
Immunogen:	Fusion protein of human SGF29
Formulation:	pH7.4 PBS, 0.05% NaN <sub>3</sub> , 40% Glycerol
Concentration:	lot specific
Purification:	Antigen affinity purification
Conjugation:	Unconjugated
Storage:	Store at -20°C.
Stability:	1 year
Predicted Protein Size:	33 kDa
Gene Name:	SAGA complex associated factor 29
Database Link:	<a href="#">Entrez Gene 112869 Human Q96ES7</a>
Background:	CCDC101 is a subunit of 2 histone acetyltransferase complexes: the ADA2A (TADA2A; MIM 602276)-containing (ATAC) complex and the SPT3 (SUPT3H; MIM 602947)-TAF9 (MIM 600822)-GCN5 (KAT2A; MIM 602301)/PCAF (KAT2B; MIM 602303) acetylase (STAGA) complex. Both of these complexes contain either GCN5 or PCAF, which are paralogous acetyltransferases.



[View online »](#)

## Product images:



Gel: 8%SDS-PAGE  
 Lysate: 40 µg  
 Lane: 293T cell lysate  
 Primary antibody: TA366473 (SGF29 Antibody) at dilution 1/600  
 Secondary antibody: Goat anti rabbit IgG at 1/5000 dilution  
 Exposure time: 20 seconds