

## Product datasheet for **TA366472S**

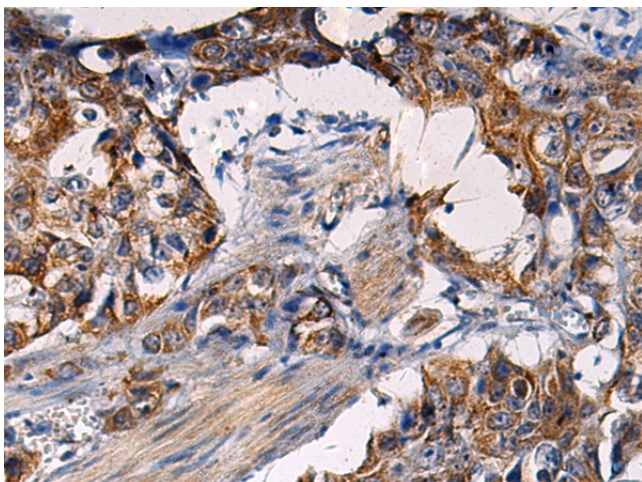
### RITA (RITA1) Rabbit Polyclonal Antibody

#### Product data:

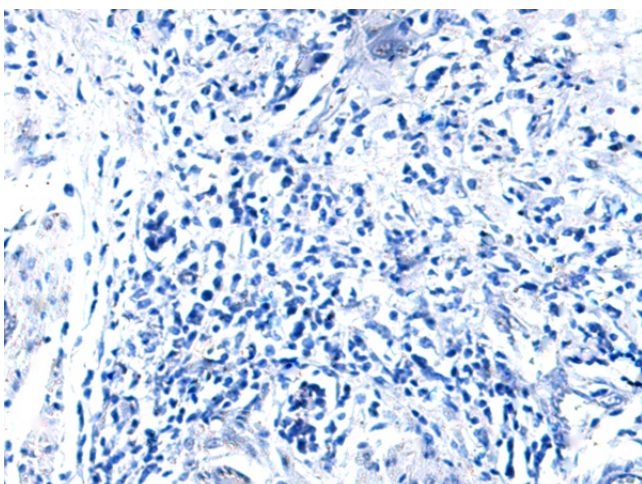
Product Type:	Primary Antibodies
Applications:	IHC
Recommended Dilution:	IHC: 50-200 Positive control: Human esophagus cancer Predicted cell location: Cytoplasm
Reactivity:	Human
Host:	Rabbit
Isotype:	IgG
Clonality:	Polyclonal
Immunogen:	Fusion protein of human RITA1
Formulation:	pH7.4 PBS, 0.05% NaN <sub>3</sub> , 40% Glycerol
Purification:	Antigen affinity purification
Conjugation:	Unconjugated
Storage:	Store at -20°C.
Stability:	1 year
Gene Name:	RBPJ interacting and tubulin associated 1
Database Link:	<a href="#">Entrez Gene 84934 Human Q96K30</a>
Background:	Tubulin-binding protein that acts as a negative regulator of Notch signaling pathway. Shuttles between the cytoplasm and the nucleus and mediates the nuclear export of RBPJ/RBPSUH, thereby preventing the interaction between RBPJ/RBPSUH and NICD product of Notch proteins (Notch intracellular domain), leading to down-regulate Notch-mediated transcription. May play a role in neurogenesis.



[View online »](#)

**Product images:**

Immunohistochemistry of paraffin-embedded Human esophagus cancer tissue using [TA366472] (RITA1 Antibody) at dilution 1/50 (Original magnification:  $\times 200$ )



Immunohistochemistry of paraffin-embedded Human esophagus cancer tissue using [TA366472] (RITA1 Antibody) at dilution 1/50, treated with fusion protein. (Original magnification:  $\times 200$ )