

Product datasheet for **TA366465**

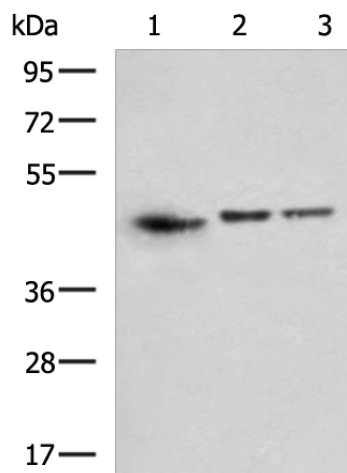
CMAS Rabbit Polyclonal Antibody

Product data:

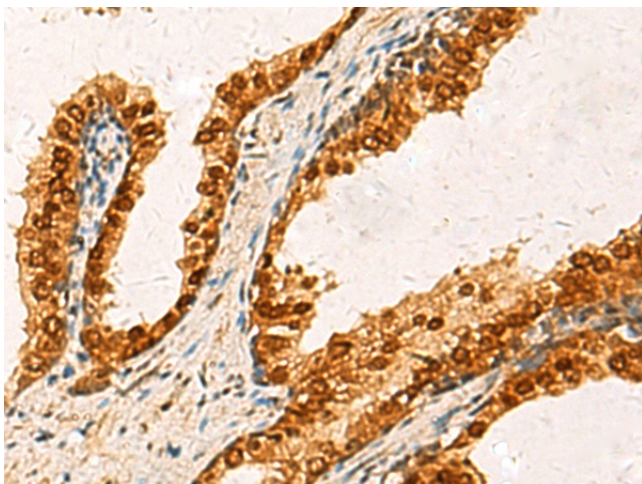
Product Type:	Primary Antibodies
Applications:	IHC, WB
Recommended Dilution:	WB: 500-2000 WB positive control: A172, 293T and PC-3 cell lysates IHC: 50-100 Positive control: Human prostate cancer Predicted cell location: Nucleus
Reactivity:	Human, Mouse, Rat
Host:	Rabbit
Isotype:	IgG
Clonality:	Polyclonal
Immunogen:	Fusion protein of human CMAS
Formulation:	pH7.4 PBS, 0.05% NaN ₃ , 40% Glycerol
Concentration:	lot specific
Purification:	Antigen affinity purification
Conjugation:	Unconjugated
Storage:	Store at -20°C.
Stability:	1 year
Predicted Protein Size:	48 kDa
Gene Name:	cytidine monophosphate N-acetylneuraminic acid synthetase
Database Link:	Entrez Gene 55907 Human Q8NFW8
Background:	This gene encodes an enzyme that converts N-acetylneuraminic acid (NeuNAc) to cytidine 5'-monophosphate N-acetylneuraminic acid (CMP-NeuNAc). This process is important in the formation of sialylated glycoprotein and glycolipids. This modification plays a role in cell-cell communications and immune responses. Alternative splicing results in multiple transcript variants.
Synonyms:	CMAS



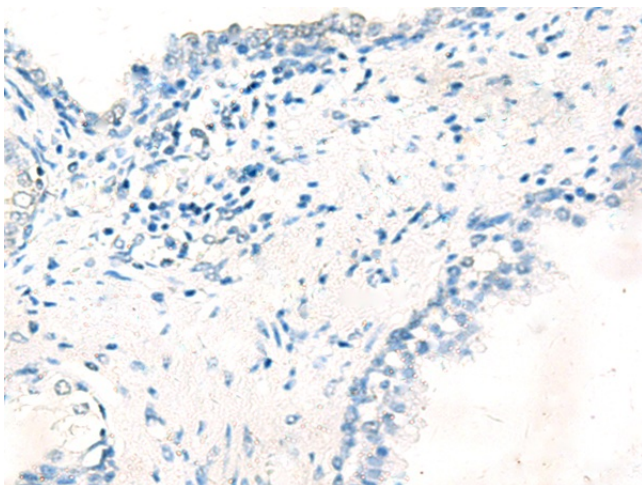
[View online »](#)

Product images:

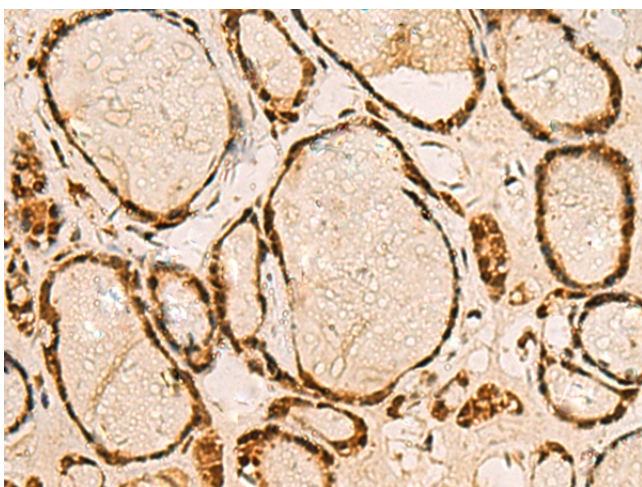
Gel: 8%SDS-PAGE
Lysate: 40 μ g
Lane 1-3: A172
293T and PC-3 cell lysates
Primary antibody: TA366465 (CMAS Antibody) at dilution 1/1000
Secondary antibody: Goat anti rabbit IgG at 1/5000 dilution
Exposure time: 30 seconds



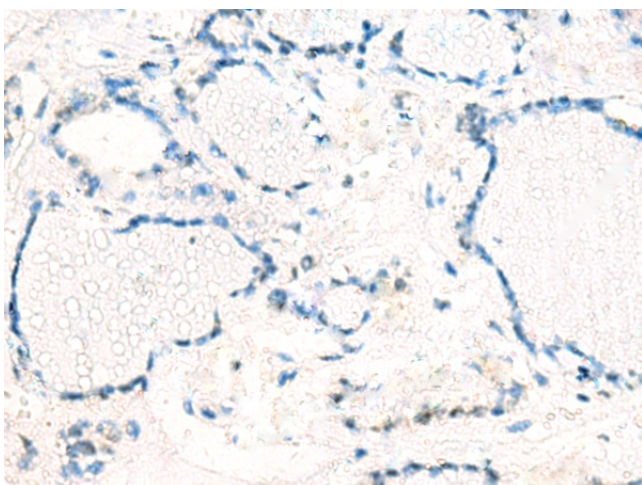
Immunohistochemistry of paraffin-embedded Human prostate cancer tissue using TA366465 (CMAS Antibody) at dilution 1/20 (Original magnification: \times 200)



Immunohistochemistry of paraffin-embedded Human prostate cancer tissue using TA366465 (CMAS Antibody) at dilution 1/20, treated with fusion protein. (Original magnification: $\times 200$)



Immunohistochemistry of paraffin-embedded Human thyroid cancer tissue using TA366465 (CMAS Antibody) at dilution 1/20 (Original magnification: $\times 200$)



Immunohistochemistry of paraffin-embedded Human thyroid cancer tissue using TA366465 (CMAS Antibody) at dilution 1/20, treated with fusion protein. (Original magnification: $\times 200$)