

Product datasheet for **TA366463**

KCTD4 Rabbit Polyclonal Antibody

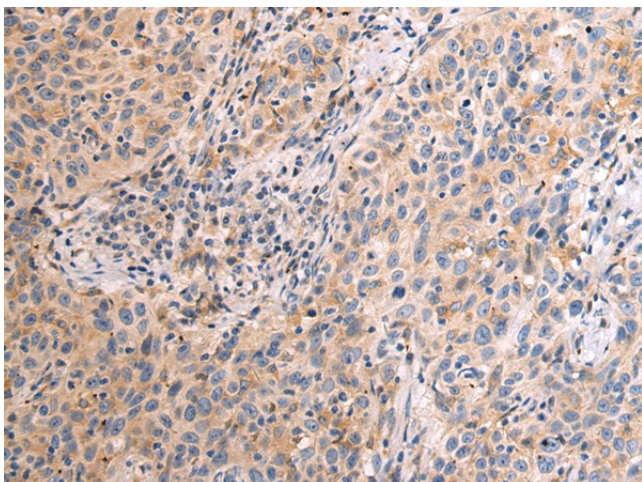
Product data:

Product Type:	Primary Antibodies
Applications:	IHC
Recommended Dilution:	IHC: 50-100 Positive control: Human prostate cancer Predicted cell location: Cytoplasm
Reactivity:	Human, Mouse
Host:	Rabbit
Isotype:	IgG
Clonality:	Polyclonal
Immunogen:	Fusion protein of human KCTD4
Formulation:	pH7.4 PBS, 0.05% NaN ₃ , 40% Glycerol
Concentration:	lot specific
Purification:	Antigen affinity purification
Conjugation:	Unconjugated
Storage:	Store at -20°C.
Stability:	1 year
Gene Name:	potassium channel tetramerization domain containing 4
Database Link:	Entrez Gene 386618 Human Q8WVF5
Background:	KCTD4 (potassium channel tetramerisation domain containing 4) is a 259 amino acid protein that contains one BTB domain, suggesting a possible role as a transcriptional regulator.
Synonyms:	bA321C24.3; OTTHUMP00000018343

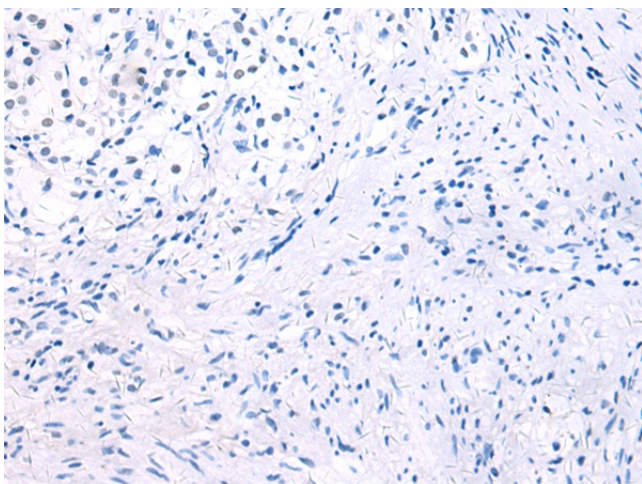


[View online »](#)

Product images:



Immunohistochemistry of paraffin-embedded Human prostate cancer tissue using TA366463 (KCTD4 Antibody) at dilution 1/100 (Original magnification: ×200)



Immunohistochemistry of paraffin-embedded Human prostate cancer tissue using TA366463 (KCTD4 Antibody) at dilution 1/100, treated with fusion protein. (Original magnification: ×200)