

Product datasheet for **TA366462S**

KRCC1 Rabbit Polyclonal Antibody

Product data:

Product Type:	Primary Antibodies
Applications:	IHC
Recommended Dilution:	IHC: 50-200 Positive control: Human colorectal cancer Predicted cell location: Cytoplasm
Reactivity:	Human
Host:	Rabbit
Isotype:	IgG
Clonality:	Polyclonal
Immunogen:	Fusion protein of human KRCC1
Formulation:	pH7.4 PBS, 0.05% NaN ₃ , 40% Glycerol
Purification:	Antigen affinity purification
Conjugation:	Unconjugated
Storage:	Store at -20°C.
Stability:	1 year
Gene Name:	lysine-rich coiled-coil 1
Database Link:	Entrez Gene 51315 Human Q9NPI7

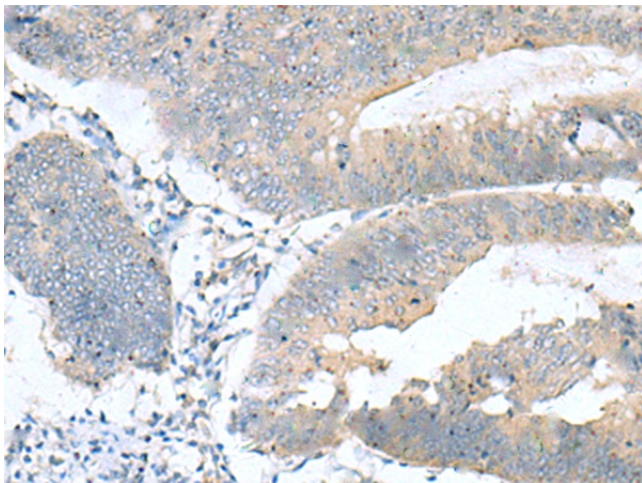
Background: KRCC1 (lysine-rich coiled-coil 1), also known as CHBP2 (cryptogenic hepatitis-binding protein 2), is a 259 amino acid protein that is encoded by a gene located on human chromosome 2p11.2. Consisting of 237 million bases, chromosome 2 is the second largest human chromosome and encodes over 1,400 genes. A number of genetic diseases are linked to genes on chromosome 2. Harlequin ichthyosis, a rare and morbid skin deformity, is associated with mutations in the ABCA12 gene. The lipid metabolic disorder sitosterolemia is associated with ABCG5 and ABCG8. An extremely rare recessive genetic disorder, Alström syndrome, is due to mutations in the ALMS1 gene. Interestingly, chromosome 2 contains what appears to be a vestigial second centromere and vestigial telomeres which gives credence to the hypothesis that human chromosome 2 is the result of an ancient fusion of two ancestral chromosomes seen in modern form today in apes.



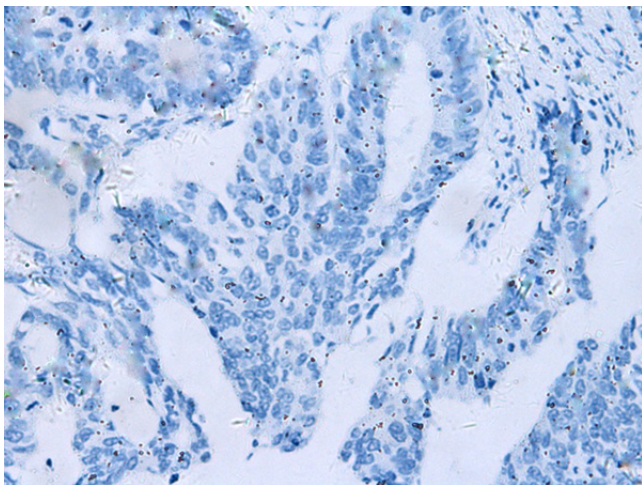
[View online »](#)

Synonyms: CHBP2; FLJ22333

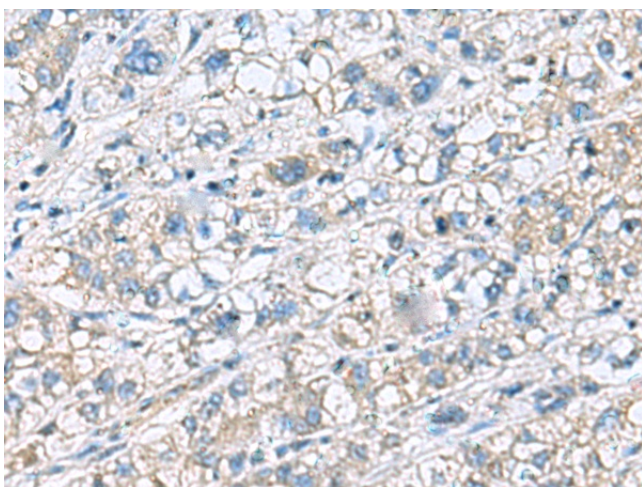
Product images:



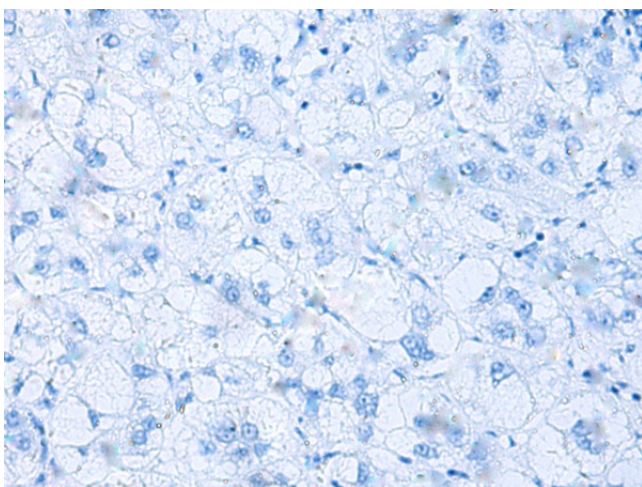
Immunohistochemistry of paraffin-embedded Human colorectal cancer tissue using [TA366462] (KRCC1 Antibody) at dilution 1/60 (Original magnification: x200)



Immunohistochemistry of paraffin-embedded Human colorectal cancer tissue using [TA366462] (KRCC1 Antibody) at dilution 1/60, treated with fusion protein. (Original magnification: x200)



Immunohistochemistry of paraffin-embedded Human liver cancer tissue using [TA366462] (KRCC1 Antibody) at dilution 1/60 (Original magnification: $\times 200$)



Immunohistochemistry of paraffin-embedded Human liver cancer tissue using [TA366462] (KRCC1 Antibody) at dilution 1/60, treated with fusion protein. (Original magnification: $\times 200$)