

Product datasheet for **TA366460**

HHIPL2 Rabbit Polyclonal Antibody

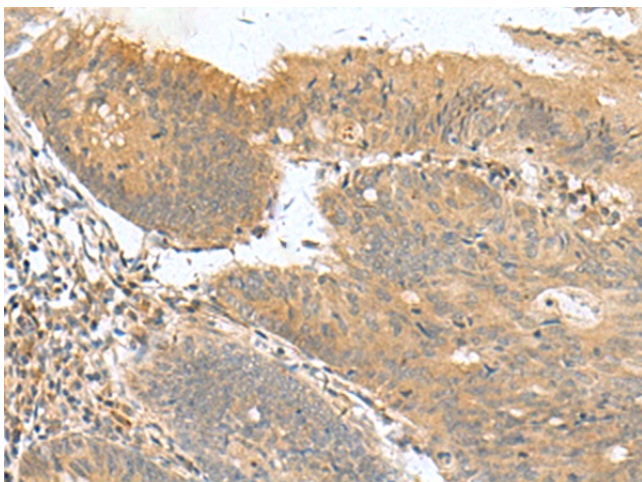
Product data:

Product Type:	Primary Antibodies
Applications:	IHC
Recommended Dilution:	IHC: 50-200 Positive control: Human colorectal cancer Predicted cell location: Secreted
Reactivity:	Human, Mouse
Host:	Rabbit
Isotype:	IgG
Clonality:	Polyclonal
Immunogen:	Fusion protein of human HHIPL2
Formulation:	pH7.4 PBS, 0.05% NaN ₃ , 40% Glycerol
Concentration:	lot specific
Purification:	Antigen affinity purification
Conjugation:	Unconjugated
Storage:	Store at -20°C.
Stability:	1 year
Gene Name:	HHIP like 2
Database Link:	Entrez Gene 79802 Human Q6UWX4
Background:	The function of this protein remains unknown.
Synonyms:	FLJ13840; HHIP3; KIAA0319-like; KIAA1822-like; KIAA1822L

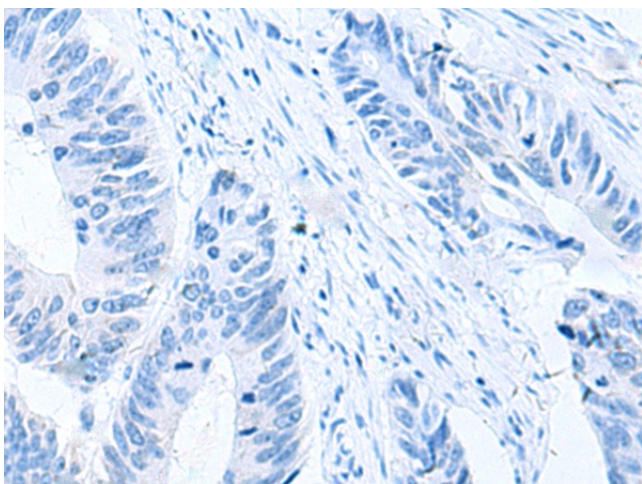


[View online »](#)

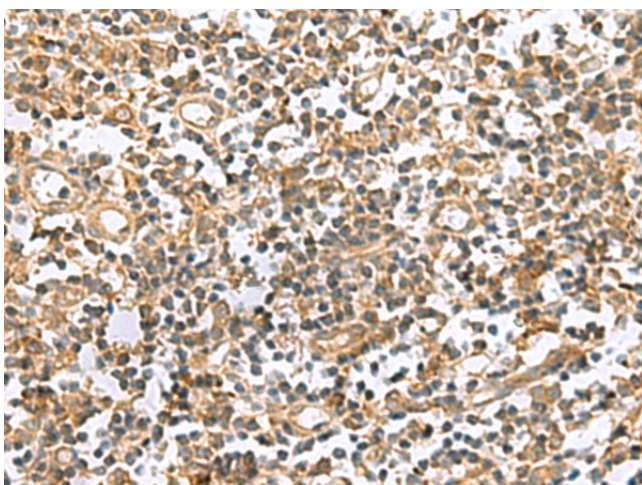
Product images:



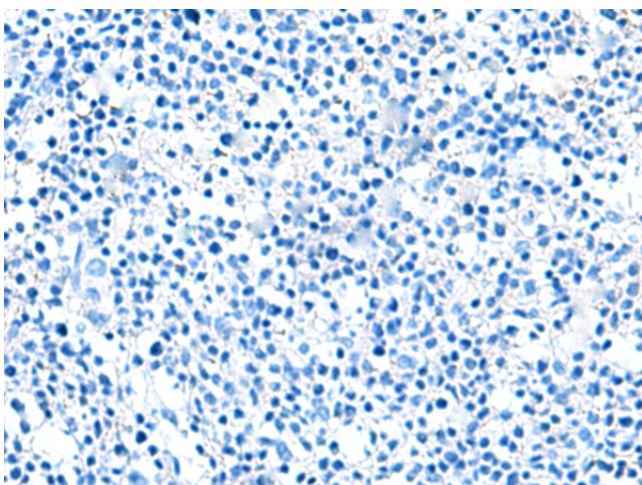
Immunohistochemistry of paraffin-embedded Human colorectal cancer tissue using TA366460 (HHIPL2 Antibody) at dilution 1/50 (Original magnification: ×200)



Immunohistochemistry of paraffin-embedded Human colorectal cancer tissue using TA366460 (HHIPL2 Antibody) at dilution 1/50, treated with fusion protein. (Original magnification: ×200)



Immunohistochemistry of paraffin-embedded Human tonsil tissue using TA366460 (HHIPL2 Antibody) at dilution 1/50 (Original magnification: ×200)



Immunohistochemistry of paraffin-embedded Human tonsil tissue using TA366460 (HHIPL2 Antibody) at dilution 1/50, treated with fusion protein. (Original magnification: ×200)