

## Product datasheet for **TA366455S**

### Syntaxin 6 (STX6) Rabbit Polyclonal Antibody

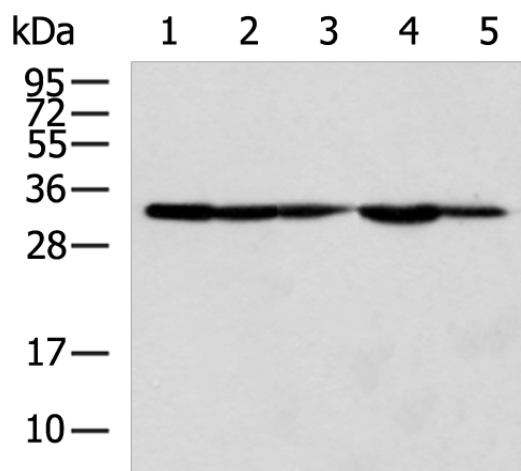
#### Product data:

Product Type:	Primary Antibodies
Applications:	IHC, WB
Recommended Dilution:	WB: 1000-5000 WB positive control: 293T, Hela, NIH/3T3, SKOV3 and HUVEC cell lysates IHC: 50-100 Positive control: Human liver cancer Predicted cell location: Cytoplasm
Reactivity:	Human, Mouse, Rat
Host:	Rabbit
Isotype:	IgG
Clonality:	Polyclonal
Immunogen:	Fusion protein of human STX6
Formulation:	pH7.4 PBS, 0.05% NaN <sub>3</sub> , 40% Glycerol
Purification:	Antigen affinity purification
Conjugation:	Unconjugated
Storage:	Store at -20°C.
Stability:	1 year
Predicted Protein Size:	29 kDa
Gene Name:	syntaxin 6
Database Link:	<a href="#">Entrez Gene 10228 Human O43752</a>
Background:	Involved in intracellular vesicle trafficking.
Synonyms:	STX6



[View online »](#)

## Product images:



Gel: 12%SDS-PAGE

Lysate: 40  $\mu$ g

Lane 1-5: 293T

Hela

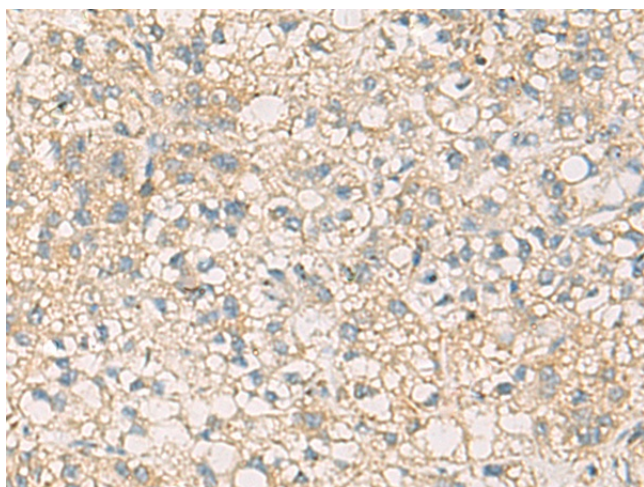
NIH/3T3

SKOV3 and HUVEC cell lysates

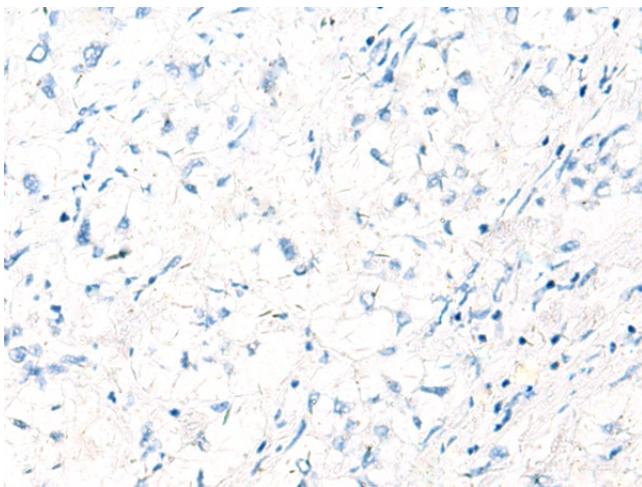
Primary antibody: [TA366455] (STX6 Antibody) at dilution 1/700

Secondary antibody: Goat anti rabbit IgG at 1/5000 dilution

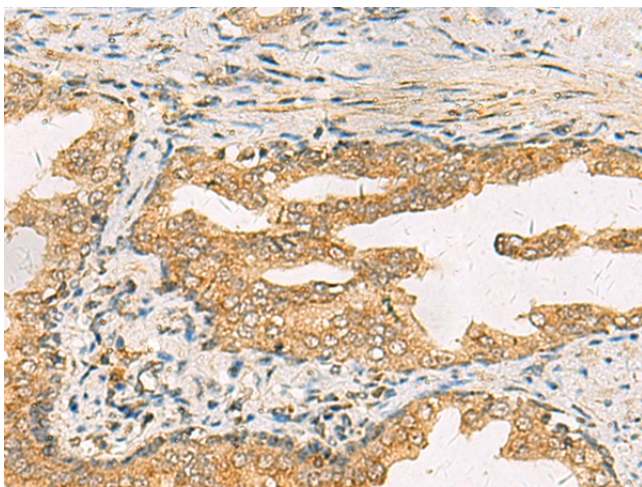
Exposure time: 5 seconds



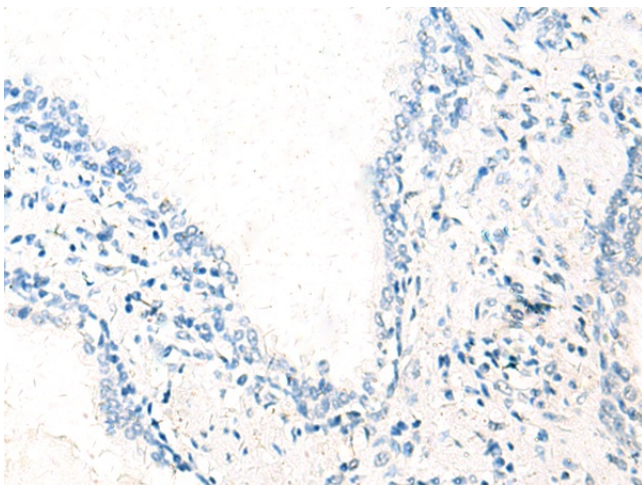
Immunohistochemistry of paraffin-embedded Human liver cancer tissue using [TA366455] (STX6 Antibody) at dilution 1/45 (Original magnification:  $\times 200$ )



Immunohistochemistry of paraffin-embedded Human liver cancer tissue using [TA366455] (STX6 Antibody) at dilution 1/45, treated with fusion protein. (Original magnification: ×200)



Immunohistochemistry of paraffin-embedded Human prostate cancer tissue using [TA366455] (STX6 Antibody) at dilution 1/45 (Original magnification: ×200)



Immunohistochemistry of paraffin-embedded Human prostate cancer tissue using [TA366455] (STX6 Antibody) at dilution 1/45, treated with fusion protein. (Original magnification: ×200)