

## Product datasheet for **TA366450**

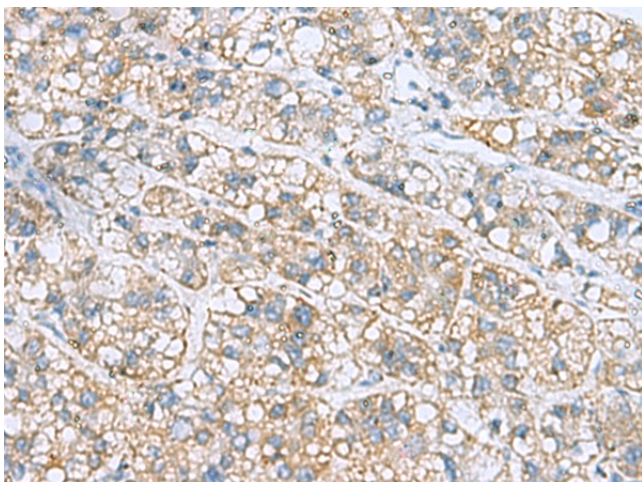
### NANP Rabbit Polyclonal Antibody

#### Product data:

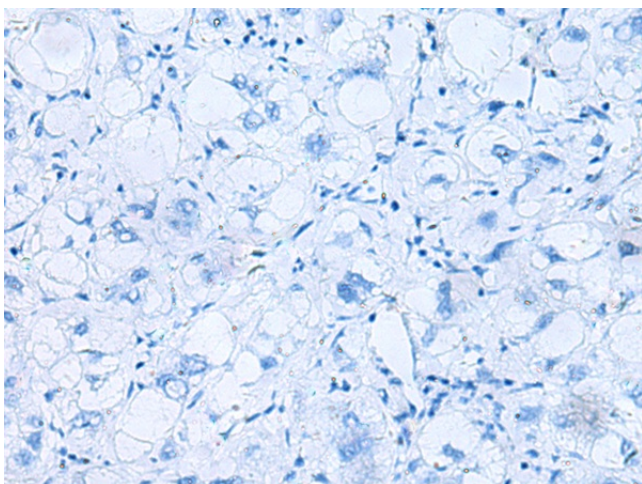
Product Type:	Primary Antibodies
Applications:	IHC
Recommended Dilution:	IHC: 50-200 Positive control: Human liver cancer Predicted cell location: Cytoplasm
Reactivity:	Human, Mouse, Rat
Host:	Rabbit
Isotype:	IgG
Clonality:	Polyclonal
Immunogen:	Fusion protein of human NANP
Formulation:	pH7.4 PBS, 0.05% NaN <sub>3</sub> , 40% Glycerol
Concentration:	lot specific
Purification:	Antigen affinity purification
Conjugation:	Unconjugated
Storage:	Store at -20°C.
Stability:	1 year
Gene Name:	N-acetylneuraminic acid phosphatase
Database Link:	<a href="#">Entrez Gene 140838 Human Q8TBE9</a>
Background:	NANP (N-acylneuraminate-9-phosphatase), also known as HDHD4 (Haloacid dehalogenase-like hydrolase domain-containing protein 4), is a 248 amino acid protein that belongs to the haloacid dehalogenase (HAD) family and is responsible for dephosphorylating Neu5Ac-9-phosphate to form N-acetylneuraminate. Characteristic of the HAD phosphatase family, the catalytic activity of NANP is dependent upon the presence of magnesium and is inhibited by vanadate and calcium.
Synonyms:	C20orf147; dj694B14.3; HDHD4; MGC26833; N-acylneuraminate-9-phosphatase; Neu5Ac-9-Pase



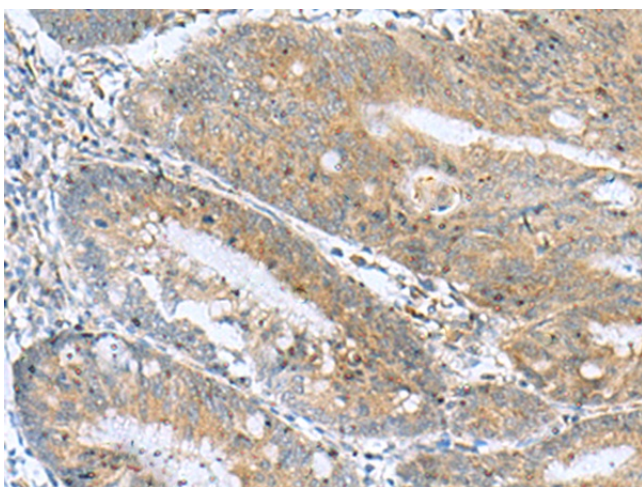
[View online »](#)

**Product images:**

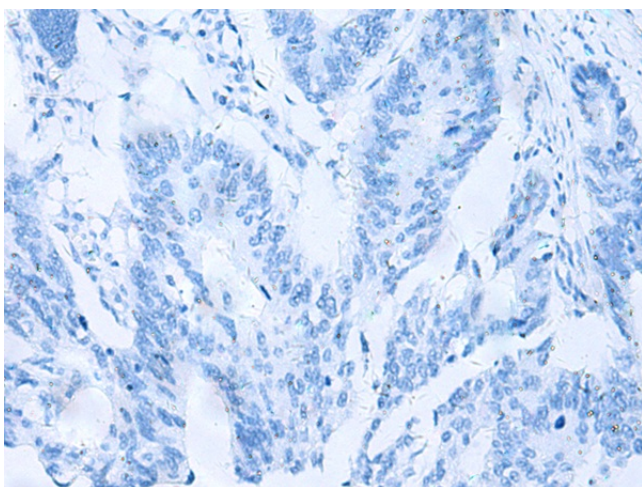
Immunohistochemistry of paraffin-embedded Human liver cancer tissue using TA366450 (NANP Antibody) at dilution 1/50 (Original magnification: ×200)



Immunohistochemistry of paraffin-embedded Human liver cancer tissue using TA366450 (NANP Antibody) at dilution 1/50, treated with fusion protein. (Original magnification: ×200)



Immunohistochemistry of paraffin-embedded Human colorectal cancer tissue using TA366450 (NANP Antibody) at dilution 1/50 (Original magnification:  $\times 200$ )



Immunohistochemistry of paraffin-embedded Human colorectal cancer tissue using TA366450 (NANP Antibody) at dilution 1/50, treated with fusion protein. (Original magnification:  $\times 200$ )